

# THE FREEDOM YOUR PATIENTS

*demand*

SINCLAIR

PERFECTHA®

\*Model is not actual patient.

**PERFECTHA®**

**MADE IN FRANCE**

*by Sinclair*

**PERFECTHA®** is manufactured 100% in France by SINCLAIR PHARMA in its laboratory specialised in the research, development and manufacturing of Hyaluronic Acid (HA) fillers, and ISO 13485 certified since 2007.

The biocompatibility and performance of the entire **PERFECTHA®** range have been clinically demonstrated. **PERFECTHA®** complies with all safety standards required by health authorities and has been CE marked since 2007.

It is registered and launched in more than 70 countries around the world. With more than **13 years of clinical use, 3.3 million syringes sold worldwide, PERFECTHA®** has established itself among the leaders on the aesthetic market.



1 - CE mark CE2195

PERFECTHA® is a line of resorbable hyaluronic acid (HA) gel implants intended for reconstructive purposes in the treatment, for instance, of facial lipoatrophy, or morphological asymmetry associated with the aging process or other underlying conditions. PERFECTHA® is for intradermal and subcutaneous application and is implanted in the areas of the face and hands to fill skin depressions and also for the augmentation of tissue volume.





APERFECTHA®

*PERFECTHA® is a tailor made range of « Made in France » HA fillers designed for wrinkle correction, facial contouring and volume restoration, offering immediate natural-looking and long-lasting results.<sup>1</sup>*

The E-brid Technology:  
results in special  
**PROPERTIES**  
of the gel

1

Use of high molecular weight and high purity Sodium Hyaluronate



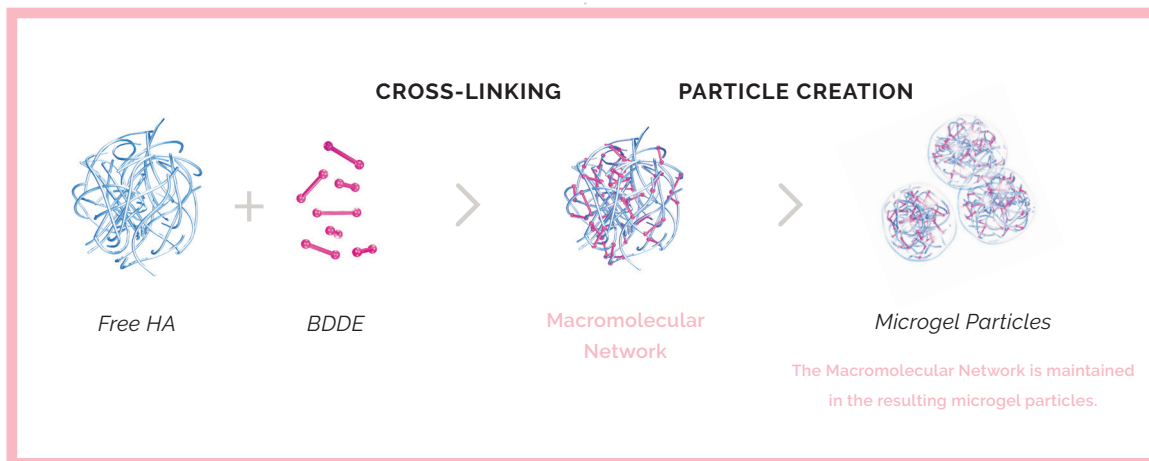
2

**ENHANCED  
CROSS-LINKING  
PROCESS**



3

Elimination of impurities



**ELASTIC GEL: LIFTING AND VOLUMISING EFFECT**





\*Models are not actual patients

4

**CONTROLLED  
MIXING  
PROCESS**



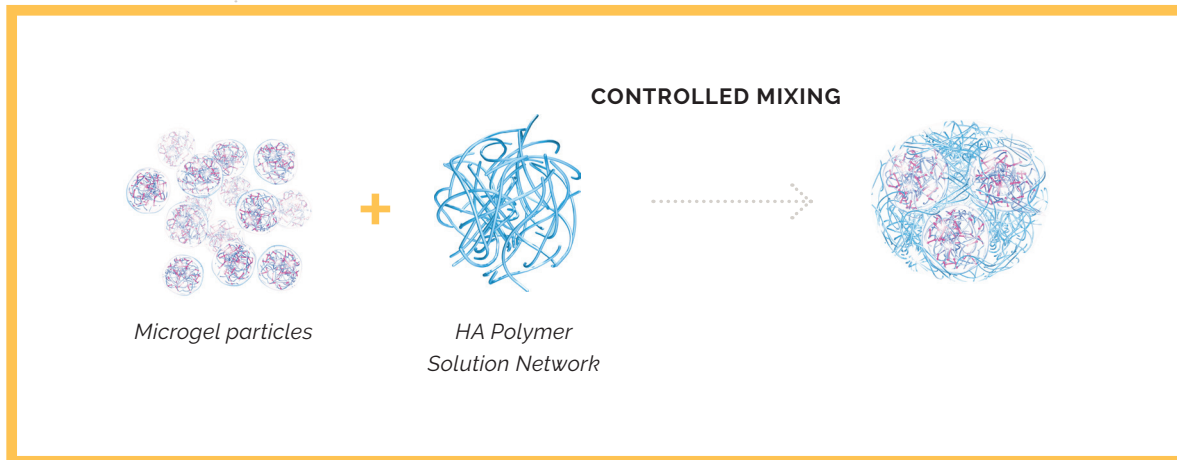
5

Standardized  
pharmaceutical grade  
sterilisation



6

Extensive  
quality control



**RESILIENT GEL: LONGER-LASTING RESULTS**

# Multi-structured connective networks for **GREAT** **BENEFITS**



#### MACROMOLECULAR NETWORK

A combination of both physical and chemical bonds leading to a strong cross-linked network.



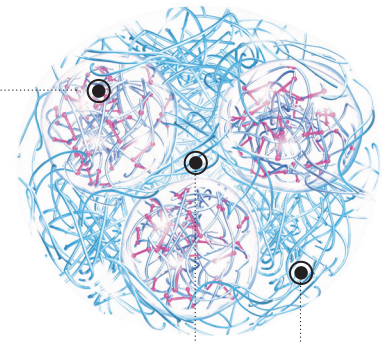
#### HA POLYMER SOLUTION NETWORK

Physical network made of entangled HA chains. It is a soft solution.



#### INTERFACIAL NETWORK

This interfacial network is created by the presence of entanglements between the outer region of the microgel particles and the neighbouring HA.



FEATURES			BENEFITS OF USE	BENEFITS FOR PATIENTS
Use of high quality, high molecular weight Sodium Hyaluronate	>	PURE GEL	<ul style="list-style-type: none"> <li>• HIGH SAFETY RATING AND SAFE USE</li> </ul>	<ul style="list-style-type: none"> <li>• Low risk of adverse effects</li> </ul>
Degree of cross-linking	>	RESILIENT MICROGEL NETWORKS	<ul style="list-style-type: none"> <li>• GOOD LIFTING AND VOLUMISING EFFECT</li> <li>• SLOW DEGRADATION PROCESS</li> </ul>	<ul style="list-style-type: none"> <li>• Instant volumising effect</li> <li>• Long lasting results</li> </ul>
HA Polymer Solution Network	>	PROTECTIVE FLUID ENVIRONMENT	<ul style="list-style-type: none"> <li>• SMOOTH AND LESS PAINFUL INJECTION</li> </ul>	<ul style="list-style-type: none"> <li>• Less painful injection</li> </ul>
Interfacial Network	>	BRIDGES BETWEEN NETWORKS	<ul style="list-style-type: none"> <li>• GOOD FLOW AND EASE OF INJECTION</li> </ul>	<ul style="list-style-type: none"> <li>• Less painful and shorter injection</li> </ul>





# EX- PER- TISE

\*Model is not actual patient

# Proven results FOR ALL BENEFITS

## PERFECTHA® IS SAFE

PERFECTHA® complies with safety standards for dermal fillers<sup>2</sup>. It is a **non-cytotoxic product**<sup>3</sup> and proves to be a **biologically safe product**<sup>2</sup>.

**Low Endotoxin Level**

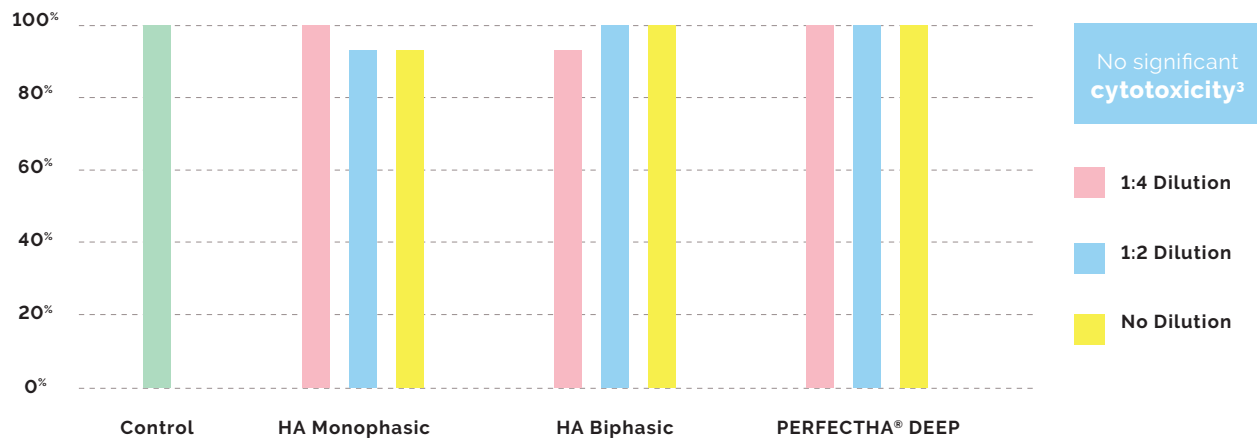
**< 4 IU / ml**  
(routinely < 0.5 IU/ml)

**Non-detectable  
BDDE**

**< 2 ppm**

PERFECTHA® showed **greater than 90% cell viability**<sup>3</sup>. Cell toxicity was tested on fibroblast cell line. Cell viability was assessed neat and in 1/2 and 1/4 dilutions using 0.2g/ml HA filler<sup>3</sup>.

## RELATIVE CELL VIABILITY (%)



2 - J.Fares. A prospective study of evaluation of the results achieved with the application of PERFECTHA® SUBSKIN, a new gel of hyaluronic acid non animal origin for malar and mental enhancement.

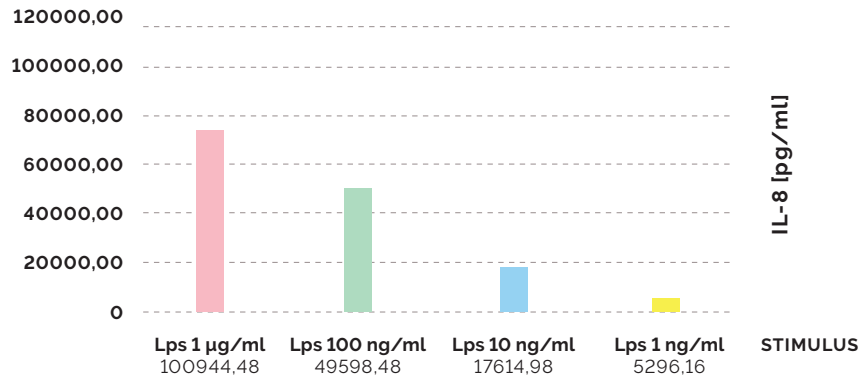
3 - Park KY1, Kim HK, Kim BJ. Comparative study of hyaluronic acid fillers by in vitro and in vivo testing. J Eur Acad Dermatol Venereol. 2014 May;28(5):565-8.  
Cell toxicity was tested on fibroblast cell line. Cell viability was assessed neat and in 1/2 and 1/4 dilutions using 0.2g/ml HA filler.





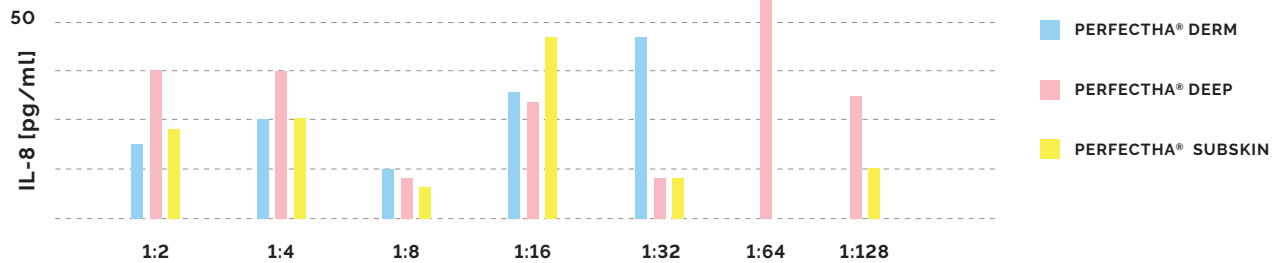
**PERFECTHA®** products were tested on adherent macrophages and induced a **very low release of IL-8** (specific mediators of inflammation), around 50 pg/ml, evidencing that the products are **devoid of inflammatory effect**<sup>4</sup>.

### LPS : POSITIVE CONTROL<sup>4</sup>



**PERFECTHA®**  
is devoid of  
inflammatory  
effect<sup>4</sup>

### DILUTION OF HYALURONAN FILLER<sup>4</sup>



adverse events<sup>5</sup>  
**0.02%**

**3.3 million** syringes sold worldwide and a very low adverse event rate.

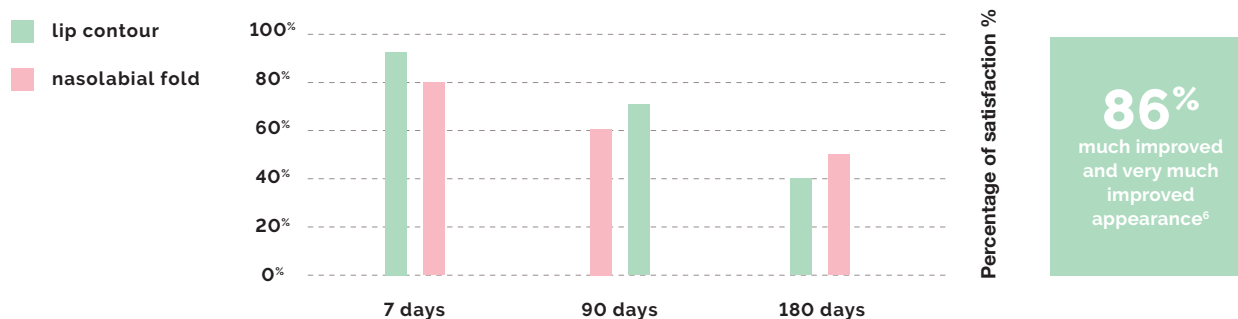
4- Koenig B. Analysis of IL-8 inducing potential from human effector cells. Evaluation of inflammatory potential of Perfectha product line by measurement of IL-8 release from adherent macrophages. Study Report, MMD, August 2020.

5- Post Market Data from July 2012 to August 2020.



## PERFECTHA® IS EFFECTIVE

Studies conducted on PERFECTHA® Derm evidenced that **86% of patients showed «much improved» and «very much improved» appearance** one week after treatment, according to the Global Aesthetic Improvement Scale (GAIS). Moreover, they proved that **filling effects last even after 6 months** as excellent results remained in the nasolabial folds in 57% of the patients, and in the lips in 45%<sup>6</sup>.



## PERFECTHA® IS LONG-LASTING

The E-BRID Technology enables the presence of a **higher number of covalent bonds** which help to **minimise the effects of hyaluronidase and oxidation** in the body, thus **slowing down the enzymatic degradation and allowing the gel to stay longer in the skin**<sup>7,8</sup>. The HA Polymer Solution network acts as a **protective environment** also **slowing down the gel degradation process**.

### DEGRADATION RATE IN VITRO<sup>7</sup> (%)

40%

PERFECTHA® DEEP

79%

Juvederm® Ultra-XC

Under the same conditions PERFECTHA® DEEP was 2 times less degraded than Juvederm Ultra XC.

### REDUCTION RATE IN VIVO IN HUMANS AT 6 MONTHS<sup>8</sup> (%)

25%

Teosyal® Global Action

12.5%

PERFECTHA® DERM

62.5%

Belotero® Balance Action

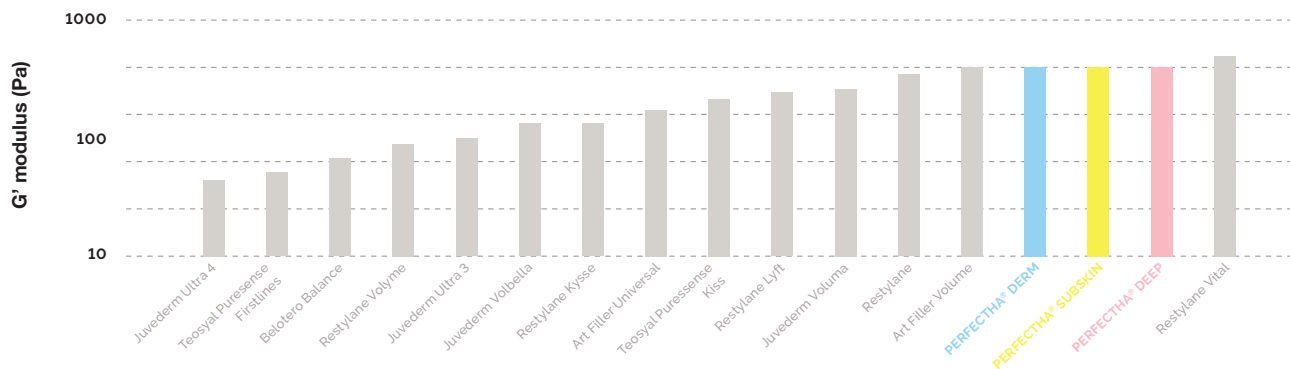
Under the same conditions PERFECTHA® DERM was 2 times less degraded than Teosyal Global Action.





## PERFECTHA® HAS A GREAT LIFTING AND VOLUMISING CAPACITY

All PERFECTHA® gels are **among the most elastic on the market**, making post-injection **results in terms of volume and lifting excellent**<sup>9</sup>. Providing the practitioner an immediate effect, **PERFECTHA® reduces the risk of overcorrection and gives the desired volume with a small amount of gel**.



## PERFECTHA® IS EASY TO INJECT

Thanks to its specific technology, **PERFECTHA® allows a smooth injection** given the **low extrusion force** needed to inject the gel, and the **addition of HA Polymer Solution which acts as a lubricant agent**. Moreover, the **controlled particle size of PERFECTHA®** and its **thin wall needle** enable the gel to have a regular flow, reducing any possible discomfort during injection.

### MEASUREMENT OF INJECTABILITY<sup>10</sup>

22,5

Biphasic Volumiser

8,7

PERFECTHA® SUBSKIN

8,0

Monophasic Volumiser

**PERFECTHA® SUBSKIN is as easy to inject as the reference monophasic gel.**

**PERFECTHA® offers the ease of injection of monophasics and the durability of biphasics.**

6- Talarico S. et al. Evaluation of the safety and efficacy of a new filler with hyaluronic acid for the treatment of nasolabial folds and lip contour. Surg. Cosmet. Dermatol.2010;2(2):83-6.

7- Park KY, Kim HK, Kim BJ. Comparative study of hyaluronic acid fillers by in vitro and in vivo testing. J Eur Acad Dermatol Venereol. 2014 May;28(5):565-8.

8- Da Costa et al. Durability of Three Different Types of Hyaluronic Acid Fillers in Skin: Are There Differences Among Biphasic, Monophasic Monodensified, and Monophasic Polydensified Products?. Aesthet. Surg. J. 2016, 1-9.

9- Internal data - Evaluation and comparison study of the G' rheological properties of PERFECTHA® with the main competitors HA-based dermal fillers. This study was conducted internally on a TA Instruments DHR-2 rheometer with a 25mm parallel-plate geometry. Frequency sweep tests were performed on samples between 0.1 and 100 rad/s at a 1% strain in order to match the gels Newtonian Plateau and using plate-plate geometry.

10- Internal Data: Material: Brookfield Texturometer CT3-4500 with a TA51 probe. Extrusion speed: 12mm/s over distance of 15mm.





# A TAILOR MADE

*range of fillers*



INDICATIONS

DEPTH OF INJECTION

HA CONCENTRATION

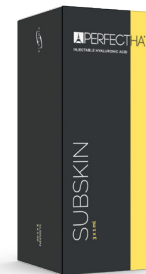
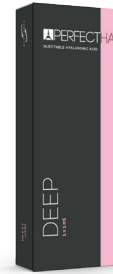
VOLUMISING CAPACITY

VOLUME

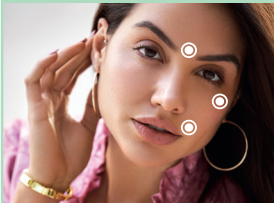
NEEDLES & CANNULAS

\*Model is not actual patient





### PERFECTHA® FINELINES



Superficial facial lines  
& skin depressions  
Periorbital lines  
Perioral lines  
Forehead finelines

INTRADERMAL

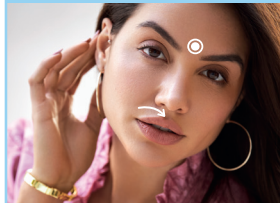
20 mg / ml

+

1 ml

2 single-use 30G x 13mm  
needles

### PERFECTHA® DERM



Medium facial lines  
& skin depressions  
Lip contour

SUBCUTANEOUS

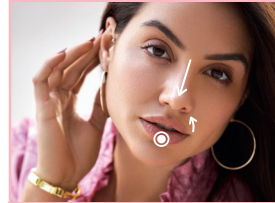
20 mg / ml

++

1 ml

2 single-use 30G x 13mm  
needles

### PERFECTHA® DEEP



Deep facial lines & skin  
depressions  
Lip volume - Nose  
Nasolabial folds  
Marionette lines  
Oral commissures  
Cheekbones and chin moderate  
augmentation

SUBCUTANEOUS

20 mg / ml

+++

1 ml

2 single-use 27G x 13mm  
needles

### PERFECTHA® SUBSKIN



Volume creation  
Facial contours  
Malar areas  
Chin and cheeks  
Nose bridge  
Hands

DEEP SUBCUTANEOUS TO  
SUPRAPERIOSTEAL

20 mg / ml

+++

3 x 1 ml

6 single-use 25G x 13mm  
needles

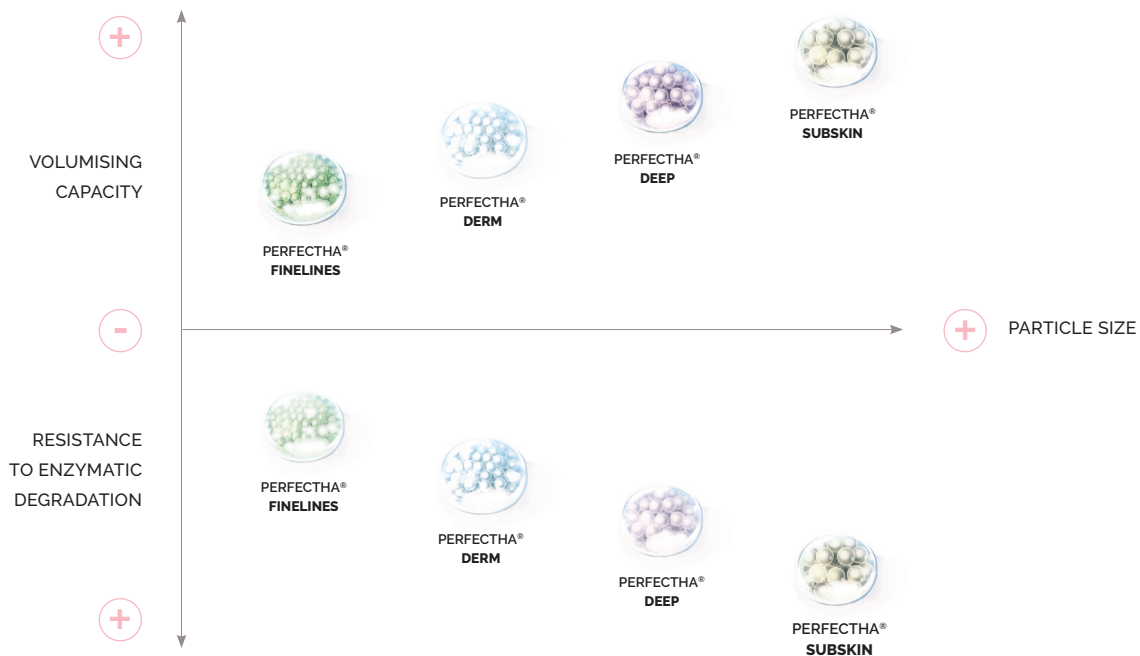


# Different PRODUCTS for different layers

**PERFECTHA®** is a range of gels made of a 20mg/ml HA concentration. Each gel has the same HA concentration, however the cross-linking within each gel influences the rheological properties enabling a range of gels to be produced.

In particular, what differentiates **PERFECTHA®** gels is the particle size: the bigger the particles, the greater the volumising effect, and the longer-lasting the results.

Each **PERFECTHA®** gel is unique and designed to best meet specific needs: depending on the treated areas, the volume needed and the depth of injection required, a different variant will be used.





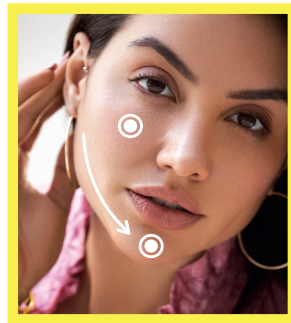
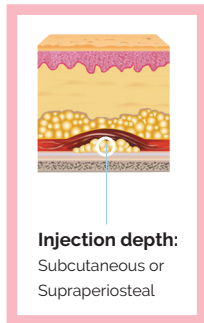
# PERFECTHA®

*Subskin, the ideal*

## VOLUMISER



### ELASTIC AND VISCOUS ENOUGH TO:



#### BE MOLDABLE

enabling you to shape your patients' faces.

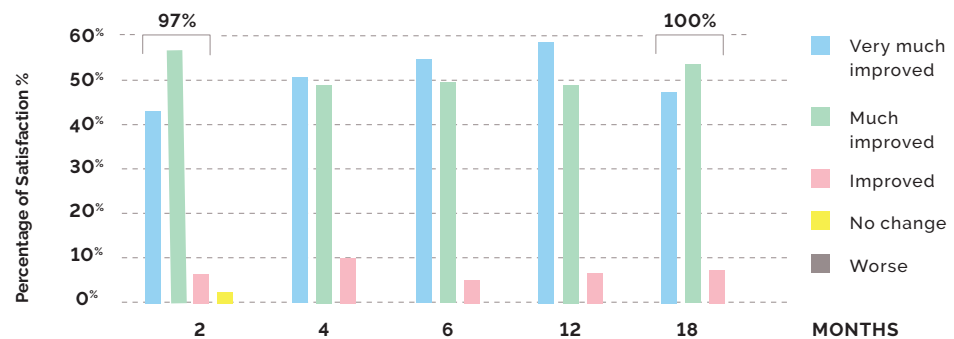
**PERFECTLY RESTORE OR CREATE VOLUME**  
and redefine facial contours.

### LONG LASTING RESULTS UP TO 18 MONTHS<sup>11</sup>

# 100%

of patients rated  
as very much  
improved or  
improved<sup>11</sup>

18 months efficacy results according to the Physician Evaluator Aesthetic Rating



References :

11- J. Fares, A prospective study of evaluation of the results achieved with the application of PERFECTHA® SUBSKIN, a new gel of hyaluronic acid non animal origin for malar and mental enhancement.

# FULL-FACE TREATMENT

## case study



Emily

**BEFORE**



Emily, 2 weeks

**AFTER**

TREATED AREA	PRODUCT	QUANTITY	INJECTION DEPTH	TECHNIQUE
Tear Trough	PERFECTHA® FINELINES	0.8 ml	Supraperiosteal plane	Retrograde and fanning
Lips	PERFECTHA® DERM	0.55 ml	Vermillion border: within the dermis, Body of the lip, Deep dermal	Retrograde linear threading
Cheeks	PERFECTHA® SUBSKIN	2.2 ml	Deep in the subcutaneous tissue and pre-periosteal planes	Bolus and retrograde threading using a cannula
Jawline	PERFECTHA® SUBSKIN	3 ml	Deep in the subcutaneous tissue and pre-periosteal planes	Bolus and retrograde threading using a cannula
Nasolabial lines	PERFECTHA® DERM	2 ml	Mid dermis	Linear threading
Nose	PERFECTHA® SUBSKIN	0.6 ml	Supraperiosteal	Microdroplets and boluses. Retrograde linear threading using a cannula. Aspiration before injection



NATURAL LOOKIN  
RESULTS



*Hannah*

**BEFORE**

**TREATED AREAS**

Tear Trough  
Lips  
Cheeks  
Chin  
Jawline



*Hannah, 2 weeks*

**AFTER**

**PRODUCTS USED**

PERFECTHA® FINELINES	14 ml
PERFECTHA® DERM	0.45 ml
PERFECTHA® SUBSKIN	2 ml
PERFECTHA® SUBSKIN	0.7 ml
PERFECTHA® SUBSKIN	2.2 ml



*Joycelin*

**BEFORE**

**TREATED AREAS**

Tear Trough  
Lips  
Cheeks  
Jawline  
Nasolabial lines  
Nose  
Chin  
Jowls



*Joycelin, 2 weeks*

**AFTER**

**PRODUCTS USED**

PERFECTHA® FINELINES	0.8 ml
PERFECTHA® DERM	0.6 ml
PERFECTHA® SUBSKIN	2 ml
PERFECTHA® SUBSKIN	2.2 ml
PERFECTHA® DERM	2 ml
PERFECTHA® SUBSKIN	0.7 ml
PERFECTHA® SUBSKIN	0.5 ml
PERFECTHA® DERM	0.3 ml

The procedures featured were performed by Dr. Ahmed el Muntasar,  
Dr Ahmed Aesthetics in London, UK.







*Emma*

**BEFORE**

**TREATED AREAS**

Lips  
Cheeks  
Jawline



*Emma, 2 weeks*

**AFTER**

**PRODUCTS USED**

PERFECTHA® DERM	0.45 ml
PERFECTHA® SUBSKIN	2 ml
PERFECTHA® SUBSKIN	0.6 ml



*Georgia*

**BEFORE**

**TREATED AREAS**

Lips  
Cheeks  
Tear Trough  
Nose  
Nasolabial lines  
Chin  
Jawline



*Georgia, 2 weeks*

**AFTER**

**PRODUCTS USED**

PERFECTHA® DERM	1 ml
PERFECTHA® SUBSKIN	2 ml
PERFECTHA® FINELINES	1.4 ml
PERFECTHA® SUBSKIN	0.8 ml
PERFECTHA® DERM	0.8 ml
PERFECTHA® SUBSKIN	0.9 ml
PERFECTHA® SUBSKIN	2 ml

The procedures featured were performed by Dr. Ahmed el Muntasar, Dr. Ahmed Aesthetics in London, UK.

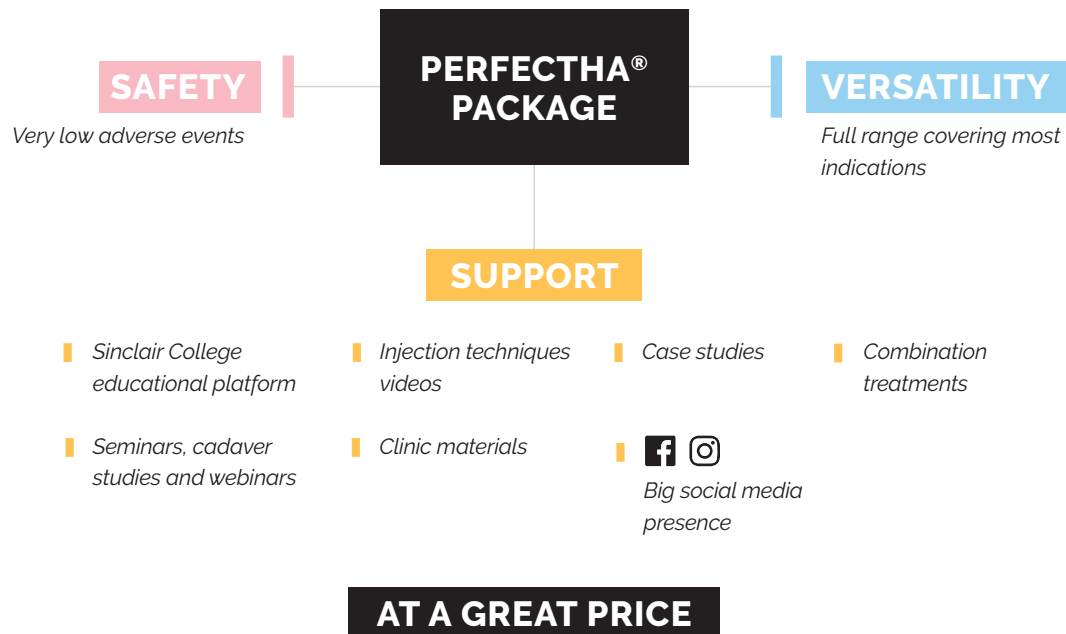




# How does PERFECTHA® BENEFIT YOUR PRACTICE?

PERFECTHA® provides **effective, safe results at a great price. We make HA treatments accessible** in the way both you and your patient want them – providing highly satisfying results no matter the goals.

Our products allow people to express themselves **safely and as often as they want**. We know how to make safe, high-quality products and how to support our valued practitioners through training and marketing.





Sinclair Pharma, has been committed to skin expertise since 1971,  
and more recently to the development of a safe, minimally invasive and effective  
portfolio of aesthetic treatments including **PERFECTHA**®.

[www.perfectha.com](http://www.perfectha.com)



1<sup>st</sup> floor, Whitfield Court - 30-32 Whitfield Street  
London - W1T 2RQ  
United Kingdom

PF-PL-092020-A