



DMP

Create **BRIGHT** smiles



**Product
Catalogue**



High Quality Dental Materials



Disclaimer: The devices advertised in the catalogue may not have been licensed in accordance with Canadian law.

Scanning this QR code will take you directly to the website.

CAT2301

Contents page

▶ COMPANY PROFILE.....	2-5
▶ SILICONE IMPRESSION MATERIALS	6-33
Table of impression techniques.....	7
A-Silicone: Bonasil A+ product range.....	8
A-Silicone: Bonasil A+ Putty.....	9
A-Silicone: Bonasil A+ Heavy.....	10
A-Silicone: Bonasil A+ Mono.....	11
A-Silicone: Bonasil A+ Regular.....	12
A-Silicone: Bonasil A+ Light HTS.....	13
A-Silicone: Bonasil A+ Light.....	14
A-Silicone: Bonasil A+ Light Extra.....	15
A-Silicone: Bonasil A+ Alginate Free.....	16
A-Silicone: Bona-Bite.....	17
A-Silicone: Bona-Bite Air.....	18
A-Silicone: Bona-Bite Crystal Vision.....	19
Scannable A-Silicone: Bonascan product range.....	20
Scannable A-Silicone: Bonascan Putty.....	21
Scannable A-Silicone: Bonascan Heavy.....	22
Scannable A-Silicone: Bonascan Mono.....	23
Scannable A-Silicone: Bonascan Light.....	24
Scannable A-Silicone: Bonascan Bite Air.....	25
C-Silicone: Bonasil Putty.....	26
C-Silicone: Bonasil Light.....	27
C-Silicone: Bonasil Activator.....	28
Laboratory A-Silicone: Bonasil A+ Lab Putty.....	29
Laboratory A-Silicone: Bonasil A+ Gingival.....	30
Laboratory A-Silicone: Bonasep.....	30
Laboratory A-Silicone: Bonasil A+ Crystal Vision.....	31
Laboratory C-Silicone: Bonalabor Putty.....	32
Accessories.....	33
▶ AESTHETIC FILLING MATERIALS	34-47
Table of indications.....	35
LC Nanohybrid Composite: Nanoceram-Bright.....	36-38
LC Posterior Composite: Bright Posterior.....	39
LC Microhybrid Composite: Bright Light.....	40-41
LC Flowable Composite: Nanoceram-Bright Flow.....	42
LC Flowable Composite: Bright Light Flow.....	43
DC Flow Core Build-Up: Bright Flow Core.....	44
CC Hybrid Composite: Bright Light Hybrid.....	45
LC Pit & Fissure Sealant.....	46
AC Temporary: Bright Temporary C & B.....	47
▶ ADHESIVES & LINERS	48-51
LC Cavity Liner.....	49
LC Bonding.....	50
CC Bonding.....	50
Etching Gel.....	51
▶ ORTHODONTIC ADHESIVES	52-53
LC Bracket Adhesive.....	53
▶ AMALGAM FILLING MATERIALS	54-57
Amalgam 70% Ag: Proalloy.....	55
Amalgam 60% Ag: Astralloy.....	56
Amalgam 43% Ag: Marvalloy.....	57



DMP is a leading manufacturer of high-quality dental materials for the global dental market, committed to clinical excellence, reliability and personalized customer service.

History outline

Established in 1985, DMP has over 30 years of experience in the design, development, manufacture and distribution of high-quality dental materials. It specializes in three main product groups providing these either with its own brand or as private label. The largest group of products are the precision silicone impression materials both for the dentist and the dental laboratory. The latest additions to this group are the scannable silicones which are suitable for use with all 3D scanning systems for digital dentistry without requiring any additional surface treatment. The second major group of products are the composites for aesthetic dentistry including bonding and etching materials. They are primarily resin-based materials and are available in light, self or dual cure varieties. The last group is the amalgams which were launched with the establishment of DMP and consist of various types for every need. These products have evolved and grown over the years meeting customer needs and the latest developments in the dental industry. Today DMP successfully markets its products worldwide and has established DMP USA to provide specialized service for its fast-growing presence in the North American market.



Headquarters

The privately-owned headquarters are situated in Athens, Greece and specifically in the industrial zone of Markopoulo which is 10 minutes from Athens international airport and 30 minutes from the international port of Piraeus. Their location is ideally suited for welcoming visitors as well as for the shipment of goods by all modes of transport all over the world.



Products you can trust

The modern premises have been designed from their conception specifically for DMP, with the particular needs of each product line in mind. Years of experience in production have led to the smallest details in manufacturing being considered and designed in the best possible way, with the finest raw materials incorporated to produce premium products. Its state-of-the-art laboratory is fully equipped with all the modern instruments to support its strict quality control in production, test requirements for the international standards as well as its continuous research program. Above all it is staffed by high-level professionals with excellent training in each specialized field. All the above guarantee DMP's commitment to products and services of the highest level.



Certifications

Quality assurance is foremost in all areas of operation and DMP is certified with the quality systems ISO 9001 and ISO 13485. All of its products are categorized as medical devices and are CE marked according to the current certifications and they have received clearance by the U.S. Food and Drug Administration. Additionally, support for regional regulatory requirements is provided by the regulatory affairs department.



First class service

DMP aims to create bright smiles and to provide the highest level of satisfaction, by closely cooperating with its customers and maintaining a high degree of flexibility for individual market needs. DMP successfully supplies the dental market worldwide achieving top quality and reliability through integrity, passion and commitment which are ingrained in DMP's culture.



CHROMATCHER

Shade guide at your fingertips!

DMP enhances its digital product range by presenting the first ever mobile shade guide application. *Chromatcher*

This unique app offers the user (dentist or technician) the ability to accomplish the restoration effortlessly. The Chromatcher is used to determine the tooth shade of the patient by taking a photo of the desired tooth area and matching it with DMP's shade system for restorative materials. Therefore, the user knows the required shade immediately through the Chromatcher avoiding the use of conventional shade guides. This process applies for all aesthetic restorations with DMP's restorative materials.

Download Chromatcher now, free at Apple Store! (available for iPhone, iPad & iPod touch)



SILICONE IMPRESSION MATERIALS



SILICONE IMPRESSION MATERIALS

Product	Delivery System	Technique	Type	Indications										
				Crown/Bridge Work	Inlays, Onlays	Functional Peripheries	Functional Impression	Reline Impressions	Case study models	Orthodontic Impressions	Impressions for removing prosthesis	Fabricating temporary impressions	Bite Registration	Scannable Silicone

A - Silicones

Bonasil A+ Putty		One step putty/wash Two step putty/wash	■	✓	✓	✓											
Bonascan Putty		One step putty/wash Two step putty/wash	■	✓	✓	✓											✓
Bonasil A+ Heavy		Single step Double step	■	✓	✓		✓										
Bonascan Heavy		Single step Double step	■	✓	✓		✓										✓
Bonasil A+ Mono		Single step	●	✓	✓		✓										
Bonascan Mono		Single step	●	✓	✓		✓										✓
Bonasil A+ Regular		Single step Double Step	◆	✓	✓			✓									
Bonasil A+ Light HTS		Single step Double Step	◆	✓	✓			✓									
Bonasil A+ Light		Single step Double Step	◆	✓	✓			✓									
Bonascan Light		Single step Double Step	◆	✓	✓			✓									✓
Bonasil A+ Light Extra		Single step Double Step	◆	✓	✓			✓									
Bonasil A+ Alginate Free		Alginate applications							✓	✓	✓	✓					
Bona-Bite		Bite registrations															✓
Bona-Bite Air		Bite registrations															✓
Bonascan Bite Air		Bite registrations															✓
Bona-Bite Crystal Vision		Transparent bite registrations															✓

C - Silicones

Bonasil Putty		One step putty/wash Two step putty/wash	■	✓	✓	✓											
Bonasil Light		One step putty/wash Two step putty/wash	◆	✓	✓			✓									

Tray Material	■	Cartridge 5:1		Cartridge 1:1	
Wash Material	◆	Jar		Tube	
Monophase	●				

SILICONE IMPRESSION MATERIALS

A-SILICONE BONASIL A+

BONASIL A+ is an addition curing vinyl polysiloxane silicone impression system (VPS) used to create impressions of the highest detail reproduction. The products are characterized by their hydrophilic properties, remarkable tear strength, dimensional accuracy and excellent resistance to permanent deformation.

Bonasil A+ impression materials are offered in various viscosities and delivery systems, in fast and regular setting times to cover any technique and application.



Reliability and exceptional properties place the Bonasil A+ materials amongst the top products in the world market. The quality control of DMP guarantees delivery of end product at its highest level while continuous research and development ensures enrichment and development of the impression material range.

A-SILICONE BONASIL A+ Putty



BONASIL A+ Putty is a kneadable very high viscosity vinyl polysiloxane (VPS) preliminary impression material formulated to guide the flowable Bonasil A+ wash materials highly accurately to the surfaces that are clinically important. It is also available in the 380ml (5:1) cartridge for those who prefer automatic dispensing over manual kneading.

ISO 4823 / ADA 19, Type 0 - putty consistency

Indications	Technical Data			
Two step putty/wash technique	Ratio (base: catalyst)	1:1	1:1	5:1
One step putty/wash technique	Total working time	1:00	2:00	1:30
Functional peripheries	Time in mouth	2:00	2:00	3:00
Crown/bridge work	Total setting time	3:00	4:30	4:30
Inlays, onlays	Setting description	Fast	Regular	-
	Shore A hardness			72
	Strain in compression (%)			1 - 4
	Recovery from deformation (%)			>99.0
	Linear dimensional change (%)			<0.2
	Tear strength (N/mm)			>6.0
	Colour			Orange

Characteristics - Advantages

- Ideal working time/setting time ratio
- Excellent consistency
- Exceptional dimensional stability
- Excellent elastic properties (high elastic memory)
- Remarkable tear strength
- Non-sticky

Item No.	Product Description
210101800	BONASIL A+ Putty Putty base 400g, Putty catalyst 400g, scoops-RS
210101800F	Putty base 400g, Putty catalyst 400g, scoops-FS
210101380	Cartridge 380ml, mixers, o-ring
210101030	Cartridge 380ml x 2, o-ring

A-SILICONE BONASIL A+ Heavy



BONASIL A+ Heavy is a high viscosity vinyl polysiloxane (VPS) preliminary impression material with excellent carving properties. The advanced surface technology (extra hydrophilic) along with the exceptional thixotropic characteristics makes Bonasil A+ Heavy an ideal impression tool in the hands of all dentists and especially the implantologists.

ISO 4823 / ADA 19, Type 1 – heavy bodied consistency

Indications	Technical Data			
Single step impression technique	Ratio (base: catalyst)	1:1	1:1	5:1
Double step impression technique	Total working time	1:00	2:00	1:30
Crown/bridge work	Time in mouth	2:00	2:30	3:00
Inlay and onlay impressions	Total setting time	3:00	4:30	4:30
Functional impressions	Setting description	Fast	Regular	-
	Shore A hardness			75
	Strain in compression (%)			2 - 5
	Recovery from deformation (%)			>99.5
	Linear dimensional change (%)			<0.2
	Tear strength (N/mm)			>6.0
	Colour			Yellow

Characteristics - Advantages

- Ideal working time/setting time ratio
- Thixotropic
- Exceptional dimensional stability
- Excellent elastic properties
- Remarkable tear strength
- Extra hydrophilic
- Void free
- Non-sticky

Item No.	Product Description
210107380	BONASIL A+ Heavy Cartridge 380ml, mixers, o-ring
210107030	Cartridge 380ml x 2, o-ring
210107010	Cartridge 50ml x 2, mixing tips-RS
210107010F	Cartridge 50ml x 2, mixing tips-FS
210107020	Cartridge 50ml x 4-RS
210107020F	Cartridge 50ml x 4-FS

A-SILICONE BONASIL A+ Mono



BONASIL A+ Mono is a medium viscosity vinyl polysiloxane (VPS) impression material ideal for single impressions with the monophasic technique. Its high elastic recovery in combination with its extra hydrophilicity ensures maximum accuracy for the impression.

ISO 4823 / ADA 19, Type 2 – medium bodied consistency

Indications	Technical Data			
Single step impression technique	Ratio (base: catalyst)	1:1	1:1	5:1
Double step impression technique	Total working time	1:00	2:00	1:30
Crown/bridge work	Time in mouth	2:00	2:30	3:00
Inlay and onlay impressions	Total setting time	3:00	4:30	4:30
Functional impressions	Setting description	Fast	Regular	-
	Shore A hardness			60
	Strain in compression (%)			3 - 5
	Recovery from deformation (%)			>99.5
	Linear dimensional change (%)			<0.2
	Tear strength (N/mm)			>6.0
	Colour			Purple

Characteristics - Advantages

- Ideal working time/setting time ratio
- Highly Thixotropic
- Ideal consistency for monophasic technique
- Exceptional dimensional stability
- Excellent elastic properties
- Remarkable tear strength
- Extra hydrophilic
- Void free
- Non-sticky

Item No.	Product Description
210104380	BONASIL A+ Mono Cartridge 380ml, mixers, o-ring
210104030	Cartridge 380ml x 2, o-ring
210103100	Cartridge 50ml x 2, mixing tips-RS
210103100F	Cartridge 50ml x 2, mixing tips-FS
210103200	Cartridge 50ml x 4-RS
210103200F	Cartridge 50ml x 4-FS

A-SILICONE BONASIL A+ Regular



BONASIL A+ Regular is a medium viscosity vinyl polysiloxane (VPS) impression material exhibiting high thixotropy and excellent hydrophilic properties. Bonasil A+ Regular is ideal for use in the two-step impression technique in combination with Bonasil A+ Putty or Bonasil A+ Heavy.

ISO 4823 / ADA 19, Type 2 – medium bodied consistency

Indications	Technical Data	
Single step impression technique	Total working time	1:00 2:00
Double step impression technique	Time in mouth	2:00 2:30
Crown/bridge work	Total setting time	3:00 4:30
Inlay and onlay impressions	Setting description	Fast Regular
Reline impressions	Shore A hardness	55
	Strain in compression (%)	3 - 5
	Recovery from deformation (%)	>99.7
	Linear dimensional change (%)	<0.2
	Tear strength (N/mm)	>5.0
	Colour	Turquoise

Characteristics - Advantages

- Ideal working time/setting time ratio
- Highly Thixotropic
- Ideal consistency
- Exceptional dimensional stability
- Excellent elastic properties
- Remarkable tear strength
- Extra hydrophilic
- Void free
- Non-sticky

Item No.	Product Description
210105010	BONASIL A+ Regular Cartridge 50ml x 2, mixing tips-RS
210105010F	Cartridge 50ml x 2, mixing tips-FS
210105020	Cartridge 50ml x 4-RS
210105020F	Cartridge 50ml x 4-FS

A-SILICONE BONASIL A+ Light HTS



BONASIL A+ Light HTS is a low viscosity vinyl polysiloxane (VPS) impression material with exceptional characteristics. Its highly accurate impressions are a result of its superior wettability due to its extra hydrophilic properties. The extremely high tear strength values show resistance to tear guaranteeing superior impressions upon removal from the mouth.

ISO 4823 / ADA 19, Type 3 – light bodied consistency

Indications	Technical Data	
Two step putty/wash technique	Total working time	1:15 2:00
One step putty/wash technique	Time in mouth	2:45 4:00
Crown/bridge work	Total setting time	4:00 6:00
Inlay and onlay impressions	Setting description	Fast Regular
Reline impressions	Shore A hardness	62
	Strain in compression (%)	3 - 5
	Recovery from deformation (%)	>99.9
	Linear dimensional change (%)	<0.2
	Tear strength (N/mm)	>6.5
	Colour	Green

Characteristics - Advantages

- Exceptional tear strength
- Extra hydrophilic
- Outstanding precision in detail reproduction
- Highly Thixotropic
- Ideal consistency
- Exceptional dimensional stability
- Excellent elastic properties
- Void free
- Non-sticky

Item No.	Product Description
210112010	BONASIL A+ Light HTS Cartridge 50ml x 2, mixing tips-RS
210112010F	Cartridge 50ml x 2, mixing tips-FS
210112020	Cartridge 50ml x 4-RS
210112020F	Cartridge 50ml x 4-FS

A-SILICONE BONASIL A+ Light



BONASIL A+ Light is a low viscosity vinyl polysiloxane (VPS) correction impression material with optimized thixotropy to ensure easy handling. Its exceptional elastic recovery and dimensional change together with its extra hydrophilic properties are essential characteristics which provide high accuracy in impressions.

ISO 4823 / ADA 19, Type 3 – light bodied consistency

Indications	Technical Data	
Two step putty/wash technique	Total working time	1:00 2:00
One step putty/wash technique	Time in mouth	2:00 2:30
Crown/bridge work	Total setting time	3:00 4:30
Inlay and onlay impressions	Setting description	Fast Regular
Reline impressions	Shore A hardness	50
	Strain in compression (%)	3 - 5
	Recovery from deformation (%)	>99.9
	Linear dimensional change (%)	<0.2
	Tear strength (N/mm)	>4.8
	Colour	Blue

- Characteristics - Advantages**
- Outstanding precision in detail reproduction
 - Ideal working/setting time ratio
 - Highly thixotropic
 - Ideal consistency
 - Exceptional dimensional stability
 - Excellent elastic properties
 - Very high tear strength
 - Extra hydrophilic
 - Void free
 - Non-sticky

Item No.	Product Description
210102010	BONASIL A+ Light Cartridge 50ml x 2, mixing tips-RS
210102010F	Cartridge 50ml x 2, mixing tips-FS
210102020	Cartridge 50ml x 4-RS
210102020F	Cartridge 50ml x 4-FS

A-SILICONE BONASIL A+ Light Extra



BONASIL A+ Light Extra is an extra low viscosity vinyl polysiloxane (VPS) correction impression material with optimized thixotropy to ensure easy handling. Its exceptional elastic recovery and dimensional change together with its extra hydrophilic properties are essential characteristics which provide high accuracy in impressions.

ISO 4823 / ADA 19, Type 3 – light bodied consistency

Indications	Technical Data	
Two step putty/wash technique	Total working time	1:00 2:00
One step putty/wash technique	Time in mouth	2:00 2:30
Crown/bridge work	Total setting time	3:00 4:30
Inlay and onlay impressions	Setting description	Fast Regular
Reline impressions	Shore A hardness	50
	Strain in compression (%)	3 - 5
	Recovery from deformation (%)	>99.9
	Linear dimensional change (%)	<0.2
	Tear strength (N/mm)	>4.8
	Colour	Green

- Characteristics - Advantages**
- Outstanding precision in detail reproduction
 - Ideal working/setting time ratio
 - Highly thixotropic
 - Ideal consistency
 - Exceptional dimensional stability
 - Excellent elastic properties
 - Very high tear strength
 - Extra hydrophilic
 - Void free
 - Non-sticky

Item No.	Product Description
210119010	BONASIL A+ Light Extra Cartridge 50ml x 2, mixing tips-RS
210119010F	Cartridge 50ml x 2, mixing tips-FS
210119020	Cartridge 50ml x 4-RS
210119020F	Cartridge 50ml x 4-FS

A-SILICONE BONASIL A+ Alginate Free



BONASIL A+ Alginate Free is a medium viscosity vinyl polysiloxane (VPS) impression material suitable for all alginate applications. The innovative A-Silicone Bonasil A+ Alginate Free combines the assets of VPS materials such as exceptional detail reproduction, elastic recovery, and dimensional stability with the properties of traditional alginates. It is also ideal for creating temporary crown and bridge impressions in preparation for the use of Bright Temporary C&B.

ISO 4823 / ADA 19, Type 2 – medium bodied consistency

Indications

- Preliminary impressions
- Anatomic models
- Fabricating temporary crowns and bridges
- Opposing dentition
- Fabricating simple removable prosthetic restorations
- Orthodontic work
- Case study models

Characteristics - Advantages

- Outstanding dimensional stability
- Exceptional elastic recovery
- Highly thixotropic
- Ideal consistency
- Repourable
- Long shelf life
- Remarkable tear strength
- Void free
- Non sticky

Technical Data

Ratio (base: catalyst)	1:1	5:1
Total working time	1:00	1:30
Time in mouth	2:00	3:00
Total setting time	3:00	4:30
Shore A hardness	45	
Strain in compression (%)	3 - 5	
Recovery from deformation (%)	>99.5	
Linear dimensional change (%)	<0.2	
Tear strength (N/mm)	>4.5	
Colour	Sky Blue	

Item No.	Product Description
210109380	BONASIL A+ Alginate Free Cartridge 380ml, mixers, o-ring
210109030	Cartridge 380ml x 2, o-ring
210109010	Cartridge 50ml x 2, mixing tips
210109020	Cartridge 50ml x 4

A-SILICONE BONA-BITE

REALITY
Four Star Award



BONA-BITE is a medium viscosity vinyl polysiloxane (VPS) material specifically for bite registrations with extremely high Shore A hardness. Bona-Bite has a fast intraoral setting time and retains enough flexibility for easy trimming or cutting. The outstanding handling characteristics are essential for an accurate occlusal registration at the first attempt.

Indications

- Making accurate occlusal registrations
- Standard bite registrations in the end bite position
- Key material for needle point registration
- Production of small model segments

Characteristics - Advantages

- Extremely high Shore A hardness
- Highly thixotropic
- Ideal consistency
- Excellent dimensional stability
- Remarkable tear strength
- Outstanding resistance to elastic rebound
- Void free
- Non sticky

Technical Data

Total working time	0:30
Time in mouth	0:45
Total setting time	1:15
Shore A hardness	93
Linear dimensional change (%)	<0.1
Tear strength (N/mm)	>6.0
Colour	Lavender

Item No.	Product Description
210108010	BONA-BITE Cartridge 50ml x 2, mixing tips
210108020	Cartridge 50ml x 4

A-SILICONE BONA-BITE Air



BONA-BITE Air is a medium viscosity vinyl polysiloxane (VPS) material for bite registrations which is characterized by its mousse-like consistency making it very light on extrusion. Due to its high thixotropy (non drip) it ensures accurate placement and enhanced patient comfort. It is available in three setting times and retains enough flexibility for easy trimming or cutting.

Indications

Making accurate occlusal registrations
Standard bite registrations in the end bite position
Key material for needle point registration
Production of small model segments

Characteristics - Advantages

- Mousse-like consistency
- Very high Shore A hardness
- Highly thixotropic
- Ideal consistency
- Excellent dimensional stability
- Remarkable tear strength
- Outstanding resistance to elastic rebound
- Void free
- Non sticky

Technical Data

Total working time	0:30	0:40	1:30
Time in mouth	0:45	1:00	3:00
Total setting time	1:15	1:40	4:30
Setting description	Superfast	Fast	Regular
Shore A hardness	85		
Linear dimensional change (%)	<0.1		
Tear strength (N/mm)	>6.0		
Colour	Light Blue		

Item No.

Product Description

210113010	BONA-BITE Air Cartridge 50ml x 2, mixing tips-SFS
210113010M	Cartridge 50ml x 2, mixing tips-FS
210113010E	Cartridge 50ml x 2, mixing tips-RS
210113020	Cartridge 50ml x 4-SFS
210113020M	Cartridge 50ml x 4-FS
210113020E	Cartridge 50ml x 4-RS

A-SILICONE BONA-BITE Crystal Vision



BONA-BITE Crystal Vision is a transparent vinyl polysiloxane (VPS) bite registration material with medium viscosity and is ideal for situations where a clear view of the area can optimize the accuracy of the impression. Its novel formulation produces highly transparent matrices through which the dentist can polymerize light-curing composites and, with this technique, greatly reduce the oxygen inhibition layer of the composite.

Indications

Making transparent occlusal registrations
Standard bite registrations in the end bite position
Key material for needle point registration
Production of small model segments
Silicone guide for composite restorations

Characteristics - Advantages

- Outstanding transparency
- Exceptional dimensional stability
- High final hardness
- Highly thixotropic
- Ideal consistency
- Very high tear strength
- Void free
- Non sticky

Technical Data

Total working time	1:00
Time in mouth	2:00
Total setting time	3:00
Shore A hardness	70
Strain in compression (%)	3 - 5
Recovery from deformation (%)	>99.5
Linear dimensional change (%)	<0.3
Tear strength (N/mm)	>7.0
Colour	Clear

Item No.

Product Description

210111010	BONA-BITE Crystal Vision Cartridge 50ml x 2, mixing tips
210111020	Cartridge 50ml x 4

SCANNABLE A-SILICONE BONASCAN

BONASCAN is a digitally scannable VPS (vinyl polysiloxane) impression system giving the user additional options when taking impressions. These scannable A-Silicones, available in 50ml and where applicable in 380ml cartridges, are designed specifically for CAD/CAM technology and are compatible with all dental scanners. By using Bonascan the user takes advantage not only of the ease of traditional impression taking techniques but also of digital technology. The impression is directly scanned without additional surface treatment (no use of reflective sprays) resulting in excellent digital images without errors. In addition, areas that are difficult to capture with intraoral scanners are reproduced precisely and reliably with the Bonascan impression materials.



The dentist benefits from all the advantages of digital technology and does not need to invest in an intraoral scanner since Bonascan impressions can be used with a desktop scanner at a fraction of the cost. Therefore, the user has improved workflow through instant communication and collaboration with the dental lab and has the ability of immediate feedback for enhanced treatment planning. Moreover, a digital record for insurance and future reference is established.



SCANNABLE A-SILICONE BONASCAN Putty



BONASCAN Putty is a kneadable very high viscosity vinyl polysiloxane (VPS) preliminary impression material formulated to guide the flowable Bonascan wash materials highly accurately to the surfaces that are clinically important. It is ideal for dentists who prefer traditional impression methods but who want to take advantage of the benefits of digital technology. It is also available in the 380ml (5:1) cartridge for those who prefer automatic dispensing over manual kneading.

ISO 4823 / ADA 19, Type 0 - putty consistency

Indications	Technical Data			
Two step putty/wash technique	Ratio (base: catalyst)	1:1	1:1	5:1
One step putty/wash technique	Total working time	1:00	2:00	1:30
Functional peripheries	Time in mouth	2:00	2:30	3:00
Crown/bridge work	Total setting time	3:00	4:30	4:30
Inlays, onlays	Setting description	Fast	Regular	-
	Shore A hardness			72
	Strain in compression (%)			1 - 3
	Recovery from deformation (%)			>99.0
	Linear dimensional change (%)			<0.2
	Tear strength (N/mm)			>6.0
	Colour			Brown

- Characteristics - Advantages**
- Optically optimized scans
 - Highly precision images because of powder free direct scanning
 - Traditional impression techniques
 - Process optimization (elimination of model pouring)
 - Careful and magnified evaluation of the impression
 - Increased efficiency in the collaboration with the laboratory
 - Immediate feedback from the laboratory or specialist

Item No.	Product Description
210124800	BONASCAN Putty Putty base 400g, Putty catalyst 400g, scoops-RS
210124800F	BONASCAN Putty Putty base 400g, Putty catalyst 400g, scoops-FS
210124380	Cartridge 380ml, mixers, o-ring
210124030	Cartridge 380ml x 2, o-ring

SCANNABLE A-SILICONE BONASCAN Heavy



BONASCAN Heavy is a scannable high viscosity vinyl polysiloxane (VPS) preliminary impression material with excellent carving properties. It is ideal for dentists who prefer traditional impression methods but who want to take advantage of the benefits of digital technology. The advanced surface technology (extra hydrophilic) along with the exceptional thixotropic characteristics makes Bonscan Heavy an ideal impression tool in the hands of all dentists and especially the implantologists.

ISO 4823 / ADA No.19, Type 1 – heavy bodied consistency

Indications	Technical Data			
Single step impression technique	Ratio (base: catalyst)	1:1	1:1	5:1
Double step impression technique	Total working time	1:00	2:00	1:30
Crown/bridge work	Time in mouth	2:00	2:30	3:00
Inlay and onlay impressions	Total setting time	3:00	4:30	4:30
Functional impressions	Setting description	Fast	Regular	-
	Shore A hardness	75		
	Strain in compression (%)	3 - 5		
	Recovery from deformation (%)	>99.5		
	Linear dimensional change (%)	<0.2		
	Tear strength (N/mm)	>6.0		
	Colour	Blue		

- Characteristics - Advantages**
- Optically optimized scans
 - Highly precision images because of powder free direct scanning
 - Traditional impression techniques
 - Process optimization (elimination of model pouring)
 - Careful and magnified evaluation of the impression
 - Increased efficiency in the collaboration with the laboratory
 - Immediate feedback from the laboratory or specialist

Item No.	Product Description
210121380	BONASCAN Heavy Cartridge 380ml, mixers, o-ring
210121030	Cartridge 380ml x 2, o-ring
210121010	Cartridge 50ml x 2, mixing tips-RS
210121010F	Cartridge 50ml x 2, mixing tips-FS
210121020	Cartridge 50ml x 4 – RS
210121020F	Cartridge 50ml x 4 – FS

SCANNABLE A-SILICONE BONASCAN Mono



BONASCAN Mono is a scannable medium viscosity vinyl polysiloxane (VPS) impression material especially designed for single impressions with the monophasic technique. It is ideal for dentists who prefer traditional impression methods but who want to take advantage of the benefits of digital technology. The high elastic recovery of Bonascan Mono in combination with its extra hydrophilicity ensures maximum accuracy for the impression.

ISO 4823 / ADA No.19, Type 2 – medium bodied consistency

Indications	Technical Data			
Single step impression technique	Ratio (base: catalyst)	1:1	1:1	5:1
Double step impression technique	Total working time	1'00	2:00	1:30
Crown/bridge work	Time in mouth	2:00	2:30	3:00
Inlay and onlay impressions	Total setting time	3:00	4:30	4:30
Functional impressions	Setting description	Fast	Regular	-
	Shore A hardness	60		
	Strain in compression (%)	3 – 5		
	Recovery from deformation (%)	>99.5		
	Linear dimensional change (%)	<0.2		
	Tear strength (N/mm)	>6.0		
	Colour	Purple		

- Characteristics - Advantages**
- Optically optimized scans
 - Highly precision images because of powder free direct scanning
 - Traditional impression techniques
 - Process optimization (elimination of model pouring)
 - Careful and magnified evaluation of the impression
 - Increased efficiency in the collaboration with the laboratory
 - Immediate feedback from the laboratory or specialist

Item No.	Product Description
210123380	BONASCAN Mono Cartridge 380ml, mixers, o-ring
210123030	Cartridge 380ml x 2, o-ring
210123010	Cartridge 50ml x 2, mixing tips-RS
210123010F	Cartridge 50ml x 2, mixing tips-FS
210123020	Cartridge 50ml x 4 – RS
210123020F	Cartridge 50ml x 4 – FS

SCANNABLE A-SILICONE BONASCAN Light



BONASCAN Light is a scannable low viscosity vinyl polysiloxane (VPS) correction impression material and is ideal for dentists who prefer traditional impression methods but who want to take advantage of the benefits of digital technology. The optimized thixotropy of Bonascan Light ensures easy handling. While its exceptional elastic recovery and dimensional change together with its extra hydrophilic properties are essential characteristics which provide high accuracy in impressions.

ISO 4823 / ADA No.19, Type 3 – light bodied consistency

Indications

Two step putty/wash technique
One step putty/wash technique
Crown/bridge work
Inlay and onlay impressions
Reline impressions

Technical Data

Total working time	1:00	2:00
Time in mouth	2:00	2:30
Total setting time	3:00	4:30
Setting description	Fast	Regular
Shore A hardness	50	
Strain in compression (%)	3 – 5	
Recovery from deformation (%)	>99.9	
Linear dimensional change (%)	<0.2	
Tear strength (N/mm)	>6.0	
Colour	Yellow	

Characteristics - Advantages

- Optically optimized scans
- Highly precision images because of powder free direct scanning
- Traditional impression techniques
- Process optimization (elimination of model pouring)
- Careful and magnified evaluation of the impression
- Increased efficiency in the collaboration with the laboratory
- Immediate feedback from the laboratory or specialist

Item No.	Product Description
210122010	BONASCAN Light Cartridge 50ml x 2, mixing tips-RS
210122010F	Cartridge 50ml x 2, mixing tips-FS
210122020	Cartridge 50ml x 4-RS
210122020F	Cartridge 50ml x 4-FS

SCANNABLE A-SILICONE BONASCAN Bite Air



BONASCAN Bite Air is a scannable medium viscosity vinyl polysiloxane (VPS) material for bite registrations and is ideal for dentists who prefer traditional impression methods but who want to take advantage of the benefits of digital technology. Bonascan Bite Air is characterized by its mousse-like consistency making it very light on extrusion. Due to its high thixotropy (non-drip) it ensures accurate placement and enhanced patient comfort. It is available in three setting times and retains enough flexibility for easy trimming or cutting.

Indications

Making accurate occlusal registrations
Standard bite registrations in the end bite position
Key material for needle point registration
Production of small model segments

Technical Data

Total working time	0:30	0:40	1:30
Time in mouth	0:45	1:00	3:00
Total setting time	1:15	1:40	4:30
Setting description	Superfast	Fast	Regular
Shore A hardness	85		
Linear dimensional change (%)	<0.1		
Tear strength (N/mm)	>6.0		
Colour	Light Blue		

Characteristics - Advantages

- Mousse-like consistency
- Optically optimized scans
- Highly precision images because of powder free direct scanning
- Traditional impression techniques
- Process optimization (elimination of model pouring)
- Careful and magnified evaluation of the impression
- Increased efficiency in the collaboration with the laboratory
- Immediate feedback from the laboratory or specialist

Item No.	Product Description
210120010	BONASCAN Bite Air Cartridge 50ml x 2, mixing tips-SFS
210120010M	Cartridge 50ml x 2, mixing tips-FS
210120010E	Cartridge 50ml x 2, mixing tips-RS
210120020	Cartridge 50ml x 4-SFS
210120020M	Cartridge 50ml x 4-FS
210120020E	Cartridge 50ml x 4-RS

C-SILICONE BONASIL Putty



BONASIL Putty is a kneadable very high viscosity C-Silicone (condensation curing). It is based on polysiloxanes and is suitable as a base impression material to be used in conjunction with Bonasil Light.

ISO 4823 / ADA 19, Type 0 – putty consistency

Indications

Two step putty/wash technique
One step putty/wash technique
Functional peripheries
Crown/bridge work
Over impression for copperband impressions
Occlusal registration

Characteristics - Advantages

- Kneadable Putty
- Smooth Handling
- Elastic Strength
- Easy withdrawal
- Non-sticky

Technical Data

Total working time	1:15
Time in mouth	2:30
Total setting time	3:45
Shore A hardness	65
Strain in compression (%)	2 - 5
Recovery from deformation (%)	>99.0
Linear dimensional change (%)	<0.3
Colour	Yellow

Item No.	Product Description
200101900	BONASIL Putty 900ml
200180001	BONASIL Introductory Kit Putty 400g, Light 60ml, Activator Paste 40ml
200180002	BONASIL Kit Putty 900ml, Light 140ml, Activator Paste 60ml

C-SILICONE BONASIL Light



BONASIL Light is a C-Silicone, elastomeric, high precision correction impression material of low viscosity.

ISO 4823 / ADA 19, Type 3 – light bodied consistency

Indications

Two step putty/wash technique
One step putty/wash technique
Reline impressions

Characteristics - Advantages

- High dimensional stability
- Premium detail reproduction
- High tear strength

Technical Data

Total working time	1:30
Time in mouth	4:00
Total setting time	5:30
Shore A hardness	50
Strain in compression (%)	2 - 8
Recovery from deformation (%)	>99.0
Linear dimensional change (%)	<0.6
Colour	Blue

Item No.	Product Description
200102140	BONASIL Light 140ml

C-SILICONE BONASIL Activator Paste

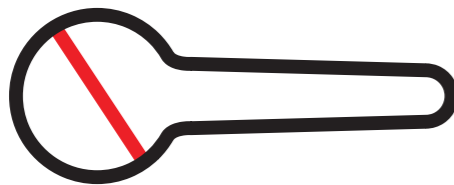


BONASIL Activator Paste is a catalyst for the condensation curing materials. It is a bright red smooth paste and contrasts very well with the yellow colour of the putty and the blue of the light body.

Dosage

Bonasil Putty
1 scoop (18g)

Bonasil Activator Paste
1 diameter of scoop (0.35g)



Bonasil Light
10cm (2.9g)

Bonasil Activator Paste
10cm (0.8g)

1	2	3	4	5	6	7	8	9	10	11	12	13	14
1	2	3	4	5	6	7	8	9	10	11	12	13	14

Factors affecting working and setting times

Dosing
Overdosing of activator reduces working and setting times
Underdosing of activator prolongs working and setting times

Application is at 23 °C ± 2 °C / 73 °F ± 4 °F, 50 ± 5% relative humidity

Higher temperature reduces working and setting times
Lower temperature prolongs working and setting times

Item No.	Product Description
200104040	BONASIL Activator Paste 40ml
200104060	BONASIL Activator Paste 60ml

LABORATORY A-SILICONE BONASIL A+ Lab Putty



BONASIL A+ Lab Putty is a vinyl polysiloxane (VPS) high precision, multiple use, laboratory addition curing putty with a mixing ratio of 1:1. It is characterized by its ease of handling and high detail reproduction.

Indications

Overcasts in dental laboratories
Casting models
Various dental technical procedures

Technical Data

Mixing time	0:30
Total working time	2:00
Total setting time	5:30
Shore A hardness	85
Recovery from deformation (%)	>99.5
Linear dimensional change (%)	<0.2
Colour	Light Blue

Characteristics - Advantages

- Excellent consistency
- Exceptional dimensional stability
- Heat resistant
- High detail reproduction
- Non-sticky

Item No.	Product Description
210106800	BONASIL A+ Lab Putty base 400g, Putty catalyst 400g, scoops
210106001	BONASIL A+ Lab Putty base 5Kg, Putty catalyst 5Kg, scoops
210106002	BONASIL A+ Lab Putty base 20Kg, Putty catalyst 20Kg, scoops

LABORATORY A-SILICONE BONASIL A+ Gingival



BONASIL A+ Gingival is a medium viscosity vinyl polysiloxane material suitable for the reproduction of gingival masks on master models available in three types Hard, Soft (high thixotropy), Soft-X (low thixotropy). It is a precise silicone which keeps its accuracy for days due to its outstanding dimensional stability. The highest aesthetic results can be obtained because of its natural gingival colour.

BONASEP is a separator which is applied to the contact surface of silicone materials to prevent adhesion between them. It is ideal for use in combination with Bonasil A+ Gingival for the reproduction of gingiva on models.

Indications

Quick and accurate gingival reproduction on master models

Characteristics - Advantages

- Outstanding aesthetic result
- Exceptional dimensional stability
- Very high tear strength
- Void free
- Non sticky

Technical Data

Consistency	Hard	Soft/Soft-X
Total working time	1:00	1:00
Total setting time	5:00	5:00
Shore A hardness	70	47
Linear dimensional change (%)	<0.3	<0.3
Tear strength (N/mm)	>6.5	>6.5
Colour	Gingiva	Gingiva

Item No.

Product Description

210114010	BONASIL A+ Gingival Soft Cartridge 50ml x 2, mixing tips
210114020	BONASIL A+ Gingival Soft-X Cartridge 50ml x 4
210110010	BONASIL A+ Gingival Hard Cartridge 50ml x 2, mixing tips
210110020	BONASIL A+ Gingival Hard Cartridge 50ml x 4
210118010	BONASEP 10ml
210118020	BONASEP 10ml
210115001	BONASEP 10ml

LABORATORY A-SILICONE BONASIL A+ Crystal Vision



BONASIL A+ Crystal Vision is a transparent laboratory vinyl polysiloxane (VPS) impression material with medium viscosity. Its novel formulation produces highly transparent matrices through which the lab technician can polymerize light-curing composites and detect the accurate waxing placement and the reproduction of composite.

Indications

Transparent matrix for creating masks for the moulding of light-curing resins

Characteristics - Advantages

- Outstanding transparency
- Exceptional dimensional stability
- High final hardness
- Highly thixotropic
- Ideal consistency
- Very high tear strength
- Void free
- Composites free from oxygen inhibition layer

Technical Data

Total working time	1:00
Total setting time	5:00
Shore A Hardness	72
Recovery from deformation (%)	>99.5
Linear dimensional change (%)	<0.3
Tear strength (N/mm)	>7.0
Colour	Clear

Item No.

Product Description

210117010	BONASIL A+ Crystal Vision Cartridge 50ml x 2, mixing tips
210117020	BONASIL A+ Crystal Vision Cartridge 50ml x 4

LABORATORY C-SILICONE BONALABOR Putty



BONALABOR Putty is a polysiloxane laboratory condensation curing silicone. It is a kneadable high viscosity putty for use by dental technicians and is offered with Bonasil Activator Paste as its catalyst.

Indications

Overcasts in dental laboratories
Casting models
Various dental technical procedures

Characteristics - Advantages






- Very good consistency
- Good final hardness
- Heat resistant
- Non-sticky

Technical Data

Shore A hardness	85	95
Mixing time	0:30	0:30
Total working time	2:00	2:00
Total setting time	6:00	6:00
Recovery from deformation (%)	>99.0	>99.0
Linear dimensional change (%)	<0.4	<0.4
Colour	Light Grey	

Item No.	Product Description
200106130	BONALABOR Putty - 85 Putty 1,300g, scoop
200106001	Putty 5Kg, scoops
200106002	Putty 20Kg, scoops
200106131	BONALABOR Putty - 95 Putty 1,300g, scoop
200106003	Putty 5Kg, scoops
200106004	Putty 20Kg, scoops

SILICONES ACCESSORIES

Item No.	Product Description	
 070100230	Mixing pad	20 sheets, plastic coated paper, dimensions 12cm x 9cm
 070000180	T-Mixer yellow	ratio 1:1, 4.2mm diameter
 070000186	T-Mixer pink	ratio 1:1, 5.4mm diameter
 070000183	T-Mixer teal	ratio 1:1, 6.5mm diameter
 070000231	Mixer yellow	ratio 5:1
 020070441	O-ring (bayonet)	
 070000217	Intra-oral tip transparent	teal & pink T-mixer
 070000213	Intra-oral tip yellow	yellow T-mixer

AESTHETIC FILLING MATERIALS

AESTHETIC FILLING MATERIALS LIGHT CURING

Product	Composite Type	Class I	Class II	Class III	Class IV	Class V	Core Build-Up	Sealant	Liner	Temporary Crown and Bridge
Nanoceram Bright	Universal Composite	●	●	●	●	●				
Nanoceram Bright Flow	Flowable Composite			●	●	●		●	●	
Bright Light	Universal Composite	●	●	●	●	●				
Bright Light Flow	Flowable Composite			●	●	●		●	●	
Bright Posterior	Posterior Composite	●	●							
Bright Flow Core	Flowable Core Build-Up						●			
Pit & Fissure Sealant	Sealant							●		
Bright Cavity Liner	Liner								●	
Bright Temporary C&B	Temporary Crown & Bridge Material									●



AESTHETIC FILLING MATERIALS NANOCERAM-BRIGHT



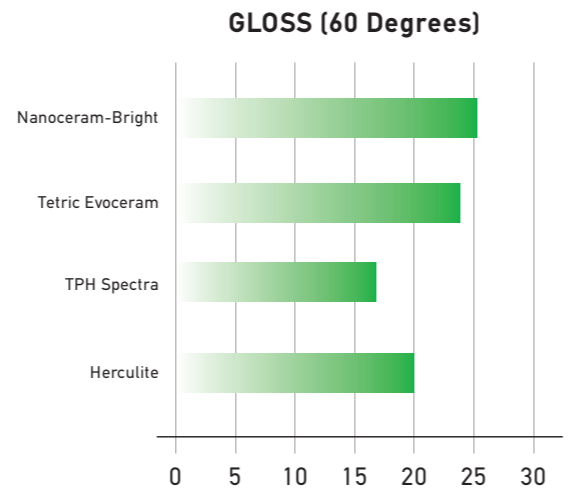
NANOCERAM-BRIGHT is a light curing nano-hybrid composite composed of a special blend of nano and micro fillers which produces a superior restorative. The highest aesthetic results have been achieved through the development of a sophisticated method for the integration of the nanoparticles in the resin matrix. These nanoparticles, of average particle size of 20 nm, assist in a quick polish after placement as well as ultralow wear.

A study, published in the Dental Advisor*, has shown that Nanoceram-Bright is among the products with the lowest water sorption and solubility. These key parameters ensure the durability and colour stability of the restoration.

*The Dental Advisor Research Report #50, July 2012

GLOSS

Gloss comparison
Conditions: Gloss was measured on composite samples after abrasion with 600 grit sandpaper and measured on a Horiba glossmeter at a 60 degree angle (ASTM D-523).



AESTHETIC FILLING MATERIALS NANOCERAM-BRIGHT

NANOCERAM-BRIGHT is characterized by its ease in sculpting with no slumping. Its low polymerization shrinkage due to high loading and particle size blending yields high marginal integrity, minimizing post operative sensitivity and eliminating micro leakage.

Indications

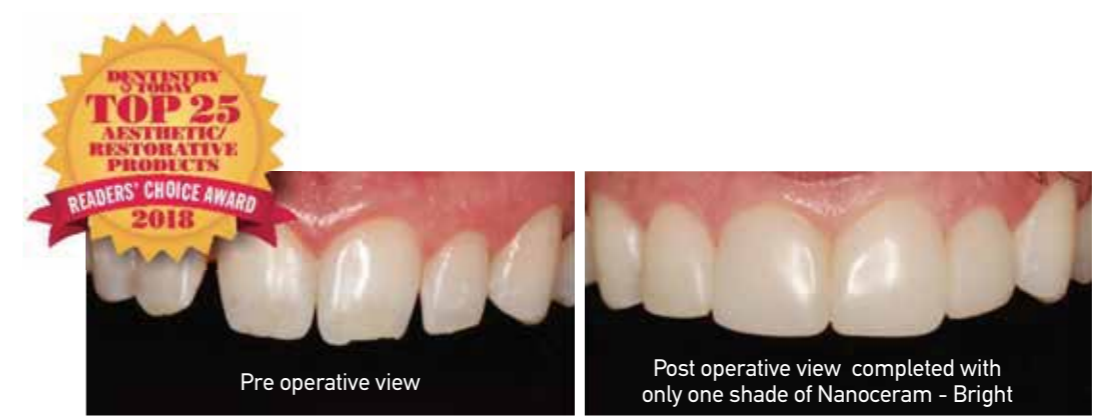
- Anterior and posterior restorations
- Class I - V restorations
- Direct veneers

Technical Data

Filled by weight (%)	80
Average filler particle size (nm)	700
Flexural strength (MPa)	138
Diametral tensile strength (MPa)	60
Water sorption (µg/mm ³)	11

Characteristics - Advantages

- Excellent handling characteristics
- Excellent sculptability
- Low shrinkage-Very good marginal adaptation
- Extremely high polishability
- High resistance to wear
- Superior aesthetics
- Strongly radiopaque
- Non-sticky



Photos courtesy of Dr. Ross Nash

AESTHETIC FILLING MATERIALS NANOCERAM-BRIGHT

▶ Item No.	Product Description
16011205	7 SYRINGE KIT* Nanoceram-Bright 4g x 7, Etching gel 3ml x 2, Single bonding 3ml x 2 brush holder, brush tips, syringe tips & mixing wells Shades: A1-A2-A3-A3.5-B2-B3-C2
16011101	INTRODUCTORY KIT* Nanoceram-Bright 4g x 4, Etching gel 3ml, Single bonding 3ml, brush holder, brush tips, syringe tips & mixing wells Shades: A2-A3-A3.5-B2
160115XX	SMART KIT* Nanoceram-Bright 4g, Etching gel 2ml, Single bonding 1ml, syringe tips for shades see below
160117XX	4 SYRINGES* Nanoceram-Bright 4g x 4 for shades see below
160114XX	REFILL Nanoceram-Bright 4g for shades see below
1601225XX	UNIT DOSE Nanoceram-Bright 0.25g x 20 for shades see below
	AVAILABLE SHADES
01	shade A1
02	shade A2
03	shade A3
05	shade A3.5
06	shade A4
07	shade B1
08	shade B2
09	shade B3
12	shade C2
13	shade C3
16	shade D3
04	shade opaque A2
19	shade incisal
24	shade bleach extra
25	shade bleach



** Shades for kits can be selected by customers according to the needs of each local market*

AESTHETIC FILLING MATERIALS BRIGHT POSTERIOR



BRIGHT POSTERIOR is a bulk fill light curing, radiopaque composite designed for posterior restorations. Its outstanding handling characteristics ensure fast and easy placement with excellent aesthetic results. Its advanced technology results in remarkable physical properties which enhance its strength and durability leading to a long-lasting restoration.

Indications
Direct restorations (Class I, II) including occlusal surfaces
Core build ups
Splinting
Indirect restorations

Technical Data	
Filled by weight (%)	81
Filler particle size (µm)	0.02 - 2.5
Flexural Strength (MPa)	143
Compressive strength (MPa)	335
Water sorption (µg/mm ³)	9.8

Characteristics - Advantages
• Fast curing for 4mm increment
• Exceptional handling characteristics
• Excellent strength and wear resistance
• Very low polymerization shrinkage
• Non-sticky

▶ Item No.	Product Description
180117XX	4 SYRINGES Bright Posterior 4g x 4 for shades see below
180114XX	REFILL Bright Posterior 4g for shades see below
1801225XX	UNIT DOSE Bright Posterior 0.25g x 20 for shades see below
	AVAILABLE SHADES
01	shade A1
02	shade A2
03	shade A3

▶ AESTHETIC FILLING MATERIALS BRIGHT LIGHT



BRIGHT LIGHT is a versatile light curing composite both for anterior and posterior restorations. Its very good consistency guarantees ease in its application and its high gloss polishability increases the resistance to plaque. High filler loading results in excellent physical properties such as high diametral and flexural strength. Due to its very low water sorption it exhibits long lasting colour stability while maintaining its physical properties over a long period of time.

Indications	Technical Data										
Anterior and posterior restorations Class I - V restorations Direct veneers	<table border="1"> <tr> <td>Filled by weight (%)</td> <td>81</td> </tr> <tr> <td>Average filler particle size (µm)</td> <td>0.9</td> </tr> <tr> <td>Flexural Strength (MPa)</td> <td>130</td> </tr> <tr> <td>Diametral tensile strength (MPa)</td> <td>55</td> </tr> <tr> <td>Water sorption (µg/mm³)</td> <td>9.5</td> </tr> </table>	Filled by weight (%)	81	Average filler particle size (µm)	0.9	Flexural Strength (MPa)	130	Diametral tensile strength (MPa)	55	Water sorption (µg/mm ³)	9.5
Filled by weight (%)	81										
Average filler particle size (µm)	0.9										
Flexural Strength (MPa)	130										
Diametral tensile strength (MPa)	55										
Water sorption (µg/mm ³)	9.5										

- Characteristics - Advantages**
- Great handling characteristics
 - Very good marginal adaptation
 - Very high fracture toughness
 - High resistance to wear
 - High polishability due to fine particles
 - High aesthetic result-chameleon effect
 - Strongly radiopaque
 - Non-sticky

▶ AESTHETIC FILLING MATERIALS BRIGHT LIGHT

Item No.	Product Description
110110205	7 SYRINGE KIT* Bright Light 4.5g x 7, Etching gel 3ml x 2, Single bonding 3ml x 2 brush holder, brush tips, syringe tips & mixing wells Shades: A1-A2-A3-A3.5-B2-B3-C2
110110101	INTRODUCTORY KIT* Bright Light 4.5g x 4, Etching gel 3ml, Single bonding 3ml, brush holder, brush tips, syringe tips & mixing wells Shades: A2-A3-A3.5-B2
1101105XX	SMART KIT* Bright Light 4.5g, Etching gel 2ml, Single bonding 1ml, syringe tips for shades see below
1101107XX	4 SYRINGES* Bright Light 4.5g x 4 for shades see below
1101104XX	REFILL Bright Light 4.5g for shades see below
1101225XX	UNIT DOSE Bright Light 0.25g x 20 for shades see below
	AVAILABLE SHADES
01	shade A1
02	shade A2
03	shade A3
05	shade A3.5
06	shade A4
07	shade B1
08	shade B2
09	shade B3
12	shade C2
13	shade C3
16	shade D3
04	shade opaque A2



** Shades for kits can be selected by customers according to the needs of each local market*

AESTHETIC FILLING MATERIALS NANOCERAM-BRIGHT FLOW



NANOCERAM-BRIGHT FLOW is a light curing flowable version of the Nanoceram-Bright composite using the same nanohybrid technology to achieve optimum results. It is characterized by its superior aesthetics through its chameleon effect and high gloss polishability. This highly thixotropic product guarantees easy handling and precise application.

Indications	Technical Data
Anterior and limited posterior restorations Liner for class I and II restorations Sealing larger pits and fissures Repair of composite restorations and ceramic veneers	Filled by weight (%) 60 Average filler particle size (nm) 700 Flexural strength (MPa) 114 Diametral tensile strength (MPa) 51 Water sorption (µg/mm ³) 15.5 Compressive strength (MPa) 280
Characteristics - Advantages	

- Excellent handling characteristics
- Excellent sculptability
- Low shrinkage-Very good marginal adaptation
- Extremely high polishability
- High resistance to wear
- Superior aesthetics
- Strongly radiopaque

Item No.	Product Description	Item No.	Product Description
1701127XX	4 SYRINGES Nanoceram-Bright Flow 2g x 4, syringe tips for shades see below	01	AVAILABLE SHADES shade A1
1701123XX	2 SYRINGES Nanoceram-Bright Flow 2g x 2, syringe tips for shades see below	02	shade A2
1701124XX	REFILL Nanoceram-Bright Flow 2g syringe tips for shades see below	03	shade A3
		05	shade A3.5
		07	shade B1
		08	shade B2
		04	shade opaque A2
		24	shade bleach extra

AESTHETIC FILLING MATERIALS BRIGHT LIGHT FLOW



BRIGHT LIGHT FLOW is a light curing microhybrid low viscosity flowable composite with excellent handling characteristics. The rheological properties of the material allow it to flow while it is being syringed under pressure and to become non-drip when placed in the cavity.

Indications	Technical Data
Anterior and limited posterior restorations Liner for class I and II restorations Sealing larger pits and fissures Repair of composite restorations and ceramic veneers	Filled by weight (%) 56 Average filler particle size (µm) 0.9 Flexural strength (MPa) 110 Diametral tensile strength (MPa) 42 Compressive strength (MPa) 280
Characteristics - Advantages	

- Excellent flow characteristics - thixotropic
- Very good marginal adaptation
- High resistance to wear
- High polishability due to fine particles
- High aesthetic result
- Strongly radiopaque

Item No.	Product Description	Item No.	Product Description
1401125XX	SMART KIT Bright Light Flow 2g, Etching gel 2ml, Single bonding 1ml, syringe tips for shades see below	1401124XX	REFILL Bright Light Flow 2g, syringe tips for shades see below
1401127XX	4 SYRINGES Bright Light Flow 2g x 4, syringe tips for shades see below	01	AVAILABLE SHADES shade A1
1401123XX	2 SYRINGES Bright Light Flow 2g x 2, syringe tips for shades see below	02	shade A2
		03	shade A3
		05	shade A3.5
		07	shade B1
		08	shade B2
		04	shade opaque A2

AESTHETIC FILLING MATERIALS BRIGHT FLOW CORE



BRIGHT FLOW CORE is a dual curing flowable composite characterized by its high flexural and compressive strength. It is specially designed for areas where light is difficult to reach as it ensures polymerization in all parts due to its dual curing properties. It has great handling characteristics and its flow properties allow ideal adaptation to tooth structure.

Indications

- Core build up
- Post cementation

Technical Data

Working time	2:00
Total self curing time	3:30
Flexural strength (MPa)	135
Compressive strength (MPa)	350
Edge strength (N)	110
Water sorption (µg/mm ³)	12.5

Characteristics - Advantages

- Excellent flow consistency
- High flexural strength
- High compressive strength
- Dual cure (light and self cured)
- Direct application

Item No.	Product Description
120112519	CARTRIDGE Bright Flow Core-DC 25ml, mixing tips, intra-oral tips Universal
120112319	DOUBLE SYRINGE Bright Flow Core-DC 5ml, mixing tips, intra-oral tips Universal

AESTHETIC FILLING MATERIALS BRIGHT LIGHT HYBRID



BRIGHT LIGHT- Chemical Cure Hybrid Composite is a self curing material for anterior and posterior restorations consisting of a universal base paste and catalyst paste.

Indications

- Anterior and posterior restorations
- Class I - V restorations
- Direct veneers

Technical Data

Working time	1:30
Total self curing time	4:00
Filled by weight (%)	79
Compressive strength (MPa)	300
Flexural strength (MPa)	120
Diametral tensile strength (MPa)	48
Shade	Universal

Characteristics - Advantages

- Easy to mix
- Great handling characteristics
- Very good marginal adaptation
- High resistance to wear
- Strongly radiopaque
- Non-sticky

Item No.	Product Description
120101000	28g KIT with BONDING Composite base paste 14g, Composite catalyst paste 14g Etching gel 3ml, Bonding base 3ml, Bonding catalyst 3ml, mixing pads & spatulas
120103028	28g BASIC KIT Composite base paste 14g, Composite catalyst paste 14g mixing pads & spatulas

Item No.	Product Description
120102000	14g KIT with BONDING Composite base paste 7g, Composite catalyst paste 7g Etching gel 2ml, Bonding base 1.5ml, Bonding catalyst 1.5ml, mixing pad & spatulas
120103014	14g BASIC KIT Composite base paste 7g, Composite catalyst paste 7g mixing pad & spatulas

AESTHETIC FILLING MATERIALS SEALANT



PIT & FISSURE SEALANT is a fluoride releasing light curing sealant for primary or permanent teeth. It is used in preventive dentistry where it has been clinically proven that sealants are effective in the prevention of caries. The fluoride that is released offers an additional protection against caries and its ideal viscosity allows it to penetrate into the deepest pits and fissures to ensure total sealing.

Indications

Sealing of pits and fissures

Characteristics - Advantages

- Very low viscosity for easy application and deep penetration
- Fluoride releasing
- Bubble free
- Increased surface wear resistance due to inclusion of particles under 0.4 microns
- Opaque colour to facilitate visibility
- Radiopaque



Etch



Rinse-Dry



Seal



Light Cure



Check Occlusion

Item No. **Product Description**
SMART KIT
Pit & Fissure Sealant 2g x 2,
Etching gel 3ml, syringe tips
shade opaque

Item No. **Product Description**
2 SYRINGES
Pit & Fissure Sealant 2g x 2,
syringe tips
shade opaque

Item No. **Product Description**
REFILL
Pit & Fissure Sealant 2g,
syringe tips
shade opaque

AESTHETIC FILLING MATERIALS BRIGHT TEMPORARY C&B



BRIGHT TEMPORARY C&B is a self-curing, moldable composite designated for the construction of temporary crown and bridge restorations, available in three different ratios (1:1, 4:1, 10:1). It offers an excellent aesthetic result and in combination with its optimal mechanical properties is an ideal tool for fabricating provisional restorations. It produces low temperatures during intra-oral setting which protect against damage to the dental pulp.

Indications

Temporary crowns and bridges
Temporary inlays and onlays

Characteristics - Advantages

- Superior aesthetics
- Low temperature increase during polymerization
- Precise and easy fit of the temporary crown/bridge due to low shrinkage
- Optimum elastic phase
- Long lasting and durable
- Extremely high polishability

Technical Data

Mixing ratio	1:1, 4:1, 10:1
Working time	0:60
Curing time in mouth	1:00- 2:00
Flexural strength (MPa)	91
Compressive strength (MPa)	295
Polymerization heat (°C)	<40

Item No. **Product Description**
CARTRIDGE 1:1
Bright Temporary C&B 50ml/75g, mixing tips
1201202XX for shades see below
DOUBLE SYRINGE 1:1
Bright Temporary C&B 7.5g, mixing tips
1201201XX for shades see below
CARTRIDGE 4:1
Bright Temporary C&B 50ml, mixing tips
1201203XX for shades see below
CARTRIDGE 10:1
Bright Temporary C&B 50ml, mixing tips
1201204XX for shades see below

Item No. **Product Description**
AVAILABLE SHADES
01 shade A1
02 shade A2
03 shade A3
07 shade B1
25 shade bleach

ADHESIVES & LINERS



ADHESIVES & LINERS BRIGHT CAVITY LINER



BRIGHT CAVITY LINER is a flowable light curing material for enforcing the floor and walls of the cavity before the application of filling materials. It contains fluoride and is characterized by its strong mechanical properties. It is compatible with other commercially available restorative materials and cements.

Indications

Liner under all filling materials
Pulp capping (indirect)

Characteristics - Advantages

- Fast and easy placement
- Fluoride releasing with antibacterial properties
- Protection of the pulp
- Increases resistance to post-operative sensitivity
- Strongly radiopaque

Item No. Product Description

130111020	Bright Cavity Liner 2g, syringe tips
130111040	Bright Cavity Liner 2g x 2, syringe tips
130111080	Bright Cavity Liner 2g x 4, syringe tips

ADHESIVES & LINERS BONDING



SINGLE BONDING is a one component light curing adhesive material for bonding enamel or dentin with light curing composites. It combines primer and adhesives into one solution to be applied after etching enamel and/or dentin (total-etch technique).

It is a solvent free material and its mechanical properties show a bond strength to dentin of over 28MPa. It is compatible with composites of other brands.



BONDING BASE and **BONDING CATALYST** is a two component self curing adhesive system for aesthetic restorations ideal for use with self curing composites.

Item No.	Product Description
130106003	Single Bonding 3ml (light cure)
130106005	Single Bonding 5ml (light cure)
130102003	Bonding Base 3ml (chemical cure)
130102005	Bonding Base 5ml (chemical cure)
130103003	Bonding Catalyst 3ml (chemical cure)
130103005	Bonding Catalyst 5ml (chemical cure)

ADHESIVES & LINERS ETCHING GEL



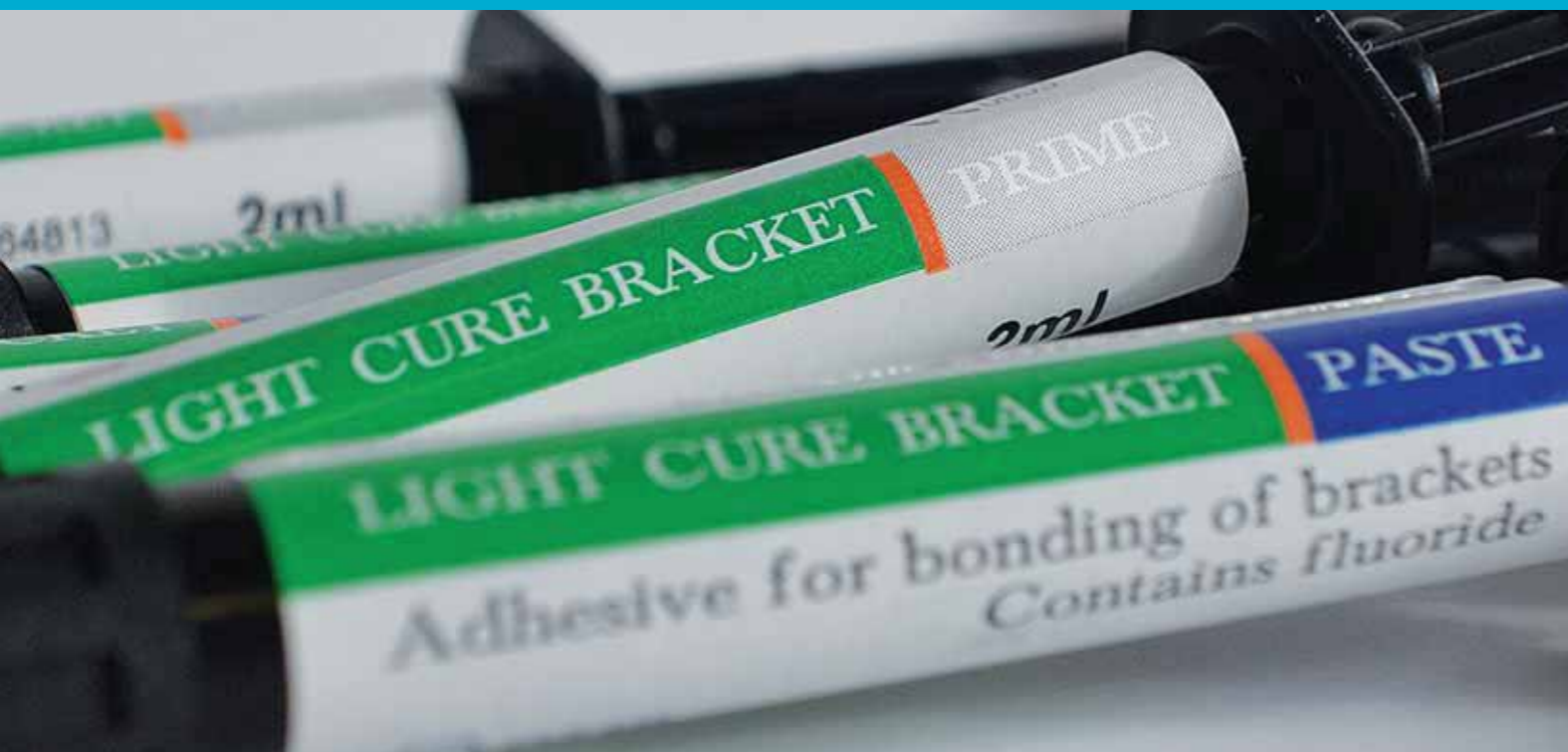
ETCHING GEL is an acid etchant for enamel and dentin with 37% phosphoric acid content. Its advanced formulation provides excellent thixotropic and handling characteristics making it ideal for etching enamel in the selective etch technique or dentin in the total etch technique. It has a distinctive blue colour facilitating application since it is clearly visible.

Characteristics - Advantages

- Thixotropic
- Easily rinsed without leaving residues
- Clearly visible due to its colour

Item No.	Product Description
130101003	Etching Gel 3ml, syringe tips
130101010	Etching Gel 10ml, syringe tips
130101050	Etching Gel 50ml, 2ml syringes x 3, syringe tips

ORTHODONTIC ADHESIVES



ADHESIVES & LINERS BRACKET ADHESIVE



ORTHODONTIC BRACKET ADHESIVE: LIGHT CURE is designed for bonding of metal and ceramic brackets on enamel. It contains fluoride for additional tooth protection. Its viscosity is high and thus prevents bracket drifting and reduces material waste. As it is light cured extra working time is ensured and therefore accurate bracket placement can be obtained.

Indications

Direct bonding of metal and ceramic brackets

Characteristics - Advantages

- Fast curing time (20 sec.)
- Extended working time
- Metal + ceramic brackets
- Prevents brackets drifting
- Less material waste
- Fluoride releasing

Item No.	Product Description
	BRACKET ADHESIVE: Light Cure
310110501	SMART KIT Paste 3g, Primer 2g, Etching gel 2ml, syringe tips
310110701	4 SYRINGE KIT Paste 3g x 2, Primer 2g x 2, syringe tips

AMALGAM FILLING MATERIALS



AMALGAM FILLING MATERIALS PROALLOY



PROALLOY is a dental silver alloy, rich in silver (70%), free of the corrosive gamma-2 (γ -2) phase (Sn_8Hg) and does not contain zinc. It is characterized by its high resistance to corrosion and therefore reduces the risk of marginal fracture. PROALLOY is a single composition alloy, which guarantees that each individual particle is an alloy of exactly the same composition. It consists of fine and ultra fine particles giving a strikingly smooth paste when amalgamated with mercury. Its handling characteristics and resistance to corrosion have included it amongst the best amalgams in the world market.

Chemical Composition

Silver (Ag) 70%, Tin (Sn) 18%, Copper (Cu) 12%
Particle Shape-Spherical
Ratio – Alloy : Hg = 1 : 1.01

Indications

Posterior restorations

Characteristics - Advantages

- Excellent handling characteristics
- High resistance to corrosion
- Long lasting luster
- Excellent marginal adaptation
- High resistance to wear

Technical Data

Compressive strength 1 hour (MPa)	220
Compressive strength 24 hour (MPa)	500
Static creep (%)	0.14
Dimensional change (%)	0.015
Working time	4:30- 5:00
Trituration time - Silamat mixer	0:08



Capsule caps are colour coded to distinguish easily the spill sizes

Single Spill / No 1 - Yellow
Double Spill / No 2 - Orange
Triple Spill / No 3 - Red

Item No.	Product Description	Item No.	Product Description
	Proalloy Powder		Proalloy Capsules
100120003	30g	100121005	No.1 x 50
100120005	50g	100122005	No.2 x 50
100120010	100g	100123005	No.3 x 50
100120025	250g	100121050	No.1 x 500
100120050	500g	100122050	No.2 x 500
		100123050	No.3 x 500

AMALGAM FILLING MATERIALS ASTRALLOY



ASTRALLOY is a non gamma 2, spherical, single composition dental silver amalgam alloy for dental restorations. It is characterized by its need for 23% less mercury than the common 1:1 ratio when amalgamated. It does not contain zinc and therefore problems that are associated with moisture during the restoration process are eliminated. The alloy consists of spherical and irregular shaped spheroidal particles which ensure excellent condensability. This gives high marginal adaptation and marginal seal thus avoiding post operative sensitivity.

Chemical Composition

Silver (Ag) 60%, Tin (Sn) 28%, Copper (Cu) 12%
Particle Shape-Spherical
Ratio – Alloy : Hg = 1 : 0.78

Indications

Posterior restorations

Characteristics - Advantages

- 23% less mercury
- High resistance to corrosion
- Very good marginal adaptation
- High resistance to wear
- Excellent condensability

Technical Data

Compressive strength 1 hour (MPa)	220
Compressive strength 24 hour (MPa)	440
Static creep (%)	0.11
Dimensional change (%)	0.015
Working time	4:30- 5:00
Trituration time - Silamat mixer	0:10



Capsule caps are colour coded to distinguish easily the spill sizes

Single Spill / No 1 - Yellow
Double Spill / No 2 - Orange
Triple Spill / No 3 - Red

Item No.	Product Description	Item No.	Product Description
	Astralloy Powder		Astralloy Capsules
100150003	30g	100151005	No.1 x 50
100150005	50g	100152005	No.2 x 50
100150010	100g	100153005	No.3 x 50
100150025	250g	100151050	No.1 x 500
100150050	500g	100152050	No.2 x 500
		100153050	No.3 x 500

AMALGAM FILLING MATERIALS MARVALLOY



MARVALLOY is a high copper dental silver alloy consisting of a constant ratio of spherical and lathe cut particles. As a result of this, great handling characteristics are obtained. Its high early strength together with its low static creep value lowers the risk of marginal fracture and assures long-lasting marginal integrity. It does not contain zinc thus eliminating problems due to moisture and avoids the corrosive gamma-2 (γ -2) phase. Tin dissolves in mercury and is preferentially bound to copper thus forming Cu_6Sn_5 which inhibits formation of the corrosive gamma -2 phase (Sn_8Hg).

Chemical Composition

Silver (Ag) 43%, Tin (Sn) 31.5%, Copper (Cu) 25.5%
Particle Shape-Spherical /Lathe cut
Ratio – Alloy : Hg = 1 : 0.99

Indications

Posterior restorations

Characteristics - Advantages

- Excellent condensability
- Smooth carving
- High resistance to wear
- Long lasting restoration
- Economical restorative

Technical Data

Compressive strength 1 hour (MPa)	235
Compressive strength 24 hour (MPa)	450
Static creep (%)	0.10
Dimensional change (%)	0.012
Working time	4:30- 5:00
Trituration time - Silamat mixer	0:12



Capsule caps are colour coded to distinguish easily the spill sizes

Single Spill / No 1 - Yellow
Double Spill / No 2 - Orange
Triple Spill / No 3 - Red

Item No.	Product Description	Item No.	Product Description
	Marvalloy Powder		Marvalloy Capsules
100110003	30g	100111005	No.1 x 50
100110005	50g	100112005	No.2 x 50
100110010	100g	100113005	No.3 x 50
100110025	250g	100111050	No.1 x 500
100110050	500g	100112050	No.2 x 500
		100113050	No.3 x 500



Manufacturer of High Quality Dental Materials

**DMP Dental Industry S.A.
(Headquarters)**

Kalyvion Avenue
Markopoulo Industrial Zone
Attiki, 190 03, Greece
Tel.: +30 22990 23041
e-mail: info@dmpdental.com

DMP USA (North America Division)

Tel.: 1-(908)963-8240
e-mail: info@dmpdental.us
www.dmpdental.us

www.dmpdental.com

