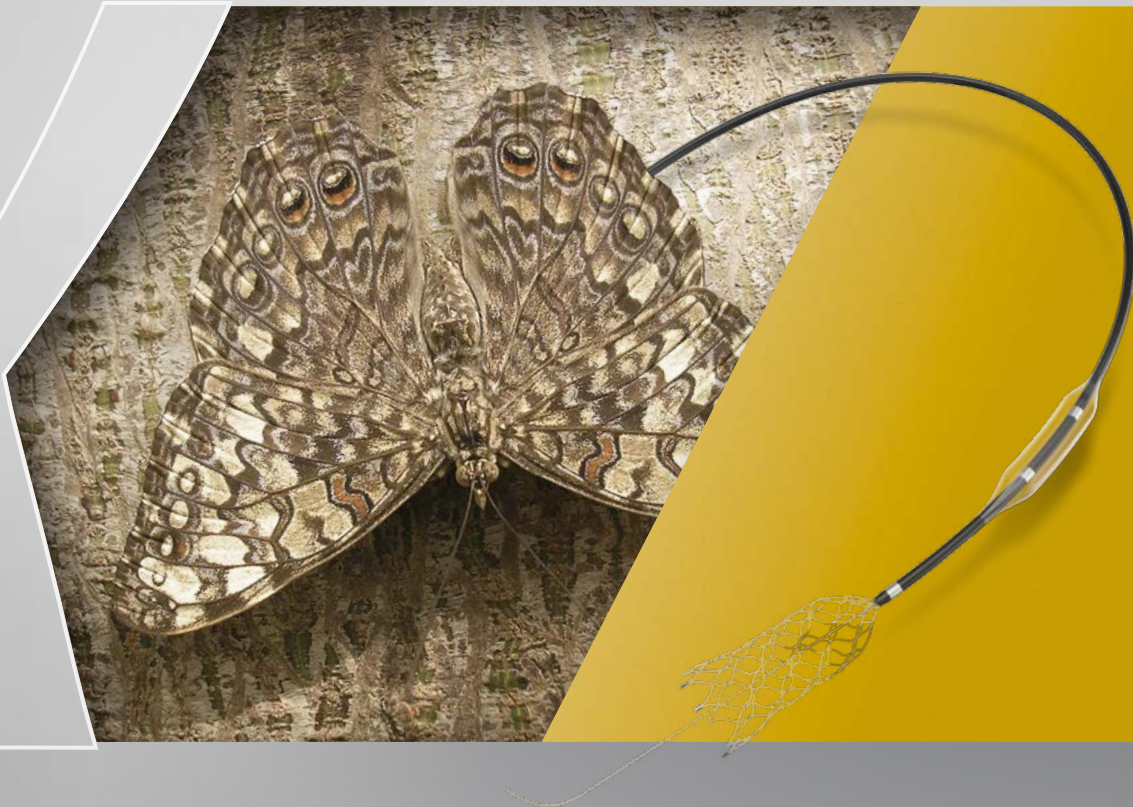


## FAST AND EASY

ICAD\* Treatment with  
NeuroSpeed® PTA Balloon Catheter and CREDO® Stent



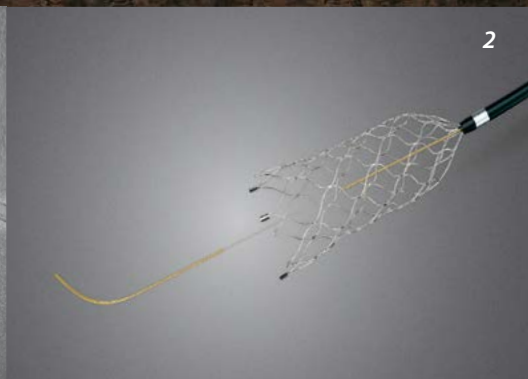
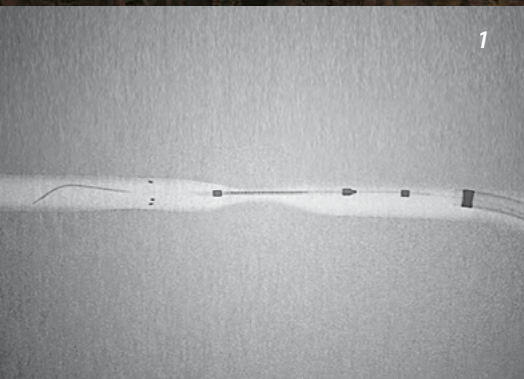
- Over-the-wire system
- Flexible self-expanding highly visible stent
- Deliverable through 0.0165" NeuroSpeed® PTA Balloon Catheter

\* ICAD Intracranial Atherosclerotic Disease

**xcandis**®

ENGINEERING STROKE SOLUTIONS

# CREDO® Stent



## GENTLE TREATMENT

The CREDO® Stent is a self-expanding stent for treatment of intracranial stenosis. Due to its low profile the stent can be delivered through the NeuroSpeed® PTA Balloon Catheter with an inner diameter of 0.0165". No exchange of the PTA balloon catheter by a microcatheter is required – minimising treatment time and procedural risks.

### Captions:

1 Visibility: stent and balloon markers

2 J-shaped transport wire tip

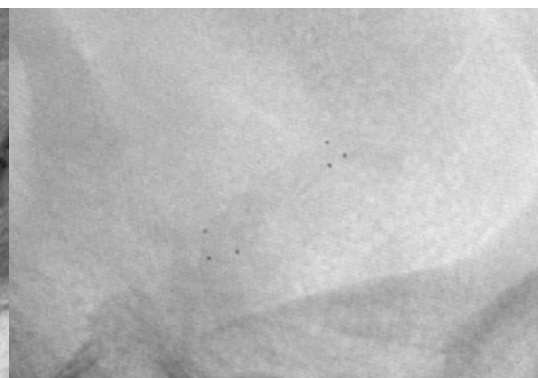
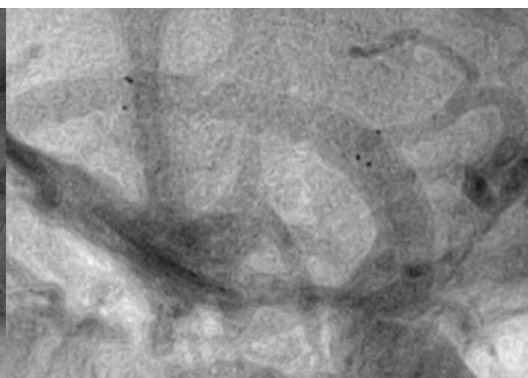
3 SEM (scanning electron microscope) image of the stent surface

## RELIABLE STENT PLATFORM

- Low profile stent
- HRF versions for treatments where higher radial force is required
- Perfect surface finish

## PERFECT CONTROL

- J-Tip transport wire
- Resheatability up to 90 %
- Improved X-ray marker

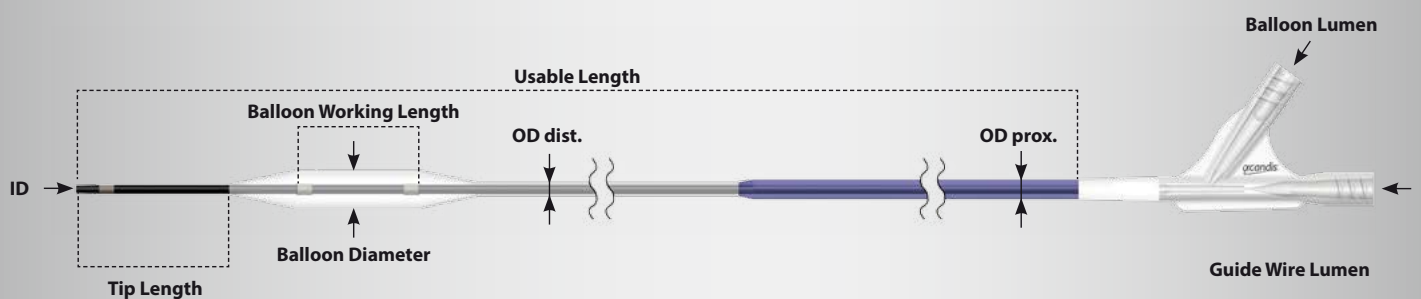


Deployment CREDO® Stent through NeuroSpeed® PTA Balloon Catheter

CREDO® Stent fully deployed

CREDO® Stent fully deployed

# NeuroSpeed® PTA Balloon Catheter



## FLEXIBLE TREATMENT

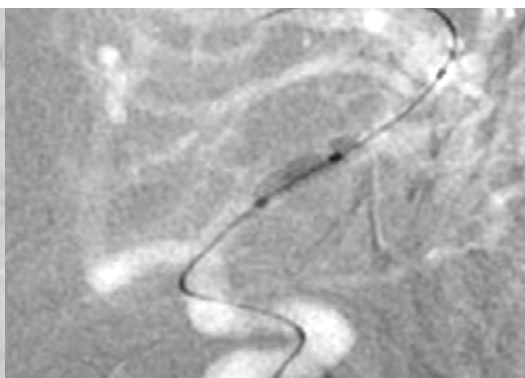
The NeuroSpeed® PTA Balloon Catheter is ideal for gentle and controllable PTA of intracranial stenosis. If additionally a stent placement is required for better stabilisation and support, the CREDO® Stent can be delivered through the low-profile NeuroSpeed® PTA Balloon Catheter without exchange manoeuvre.

## FEW SIZES – BIG IMPACT

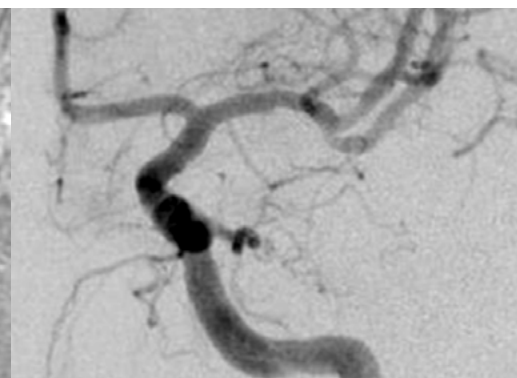
- Gentle and effective dilation of stenosis
- Over-the-wire double lumen catheter with 0.0165" ID
- Covering a vessel diameter range from 1.5 mm to 4.0 mm
- Usable length of 150 cm



Initial degree of stenosis 80%  
Pre Dilatation



NeuroSpeed® PTA Balloon Catheter 2.0 x 8 mm  
Inflation



Final degree of stenosis ~ 10%  
Post Dilatation

# ORDERING INFORMATION

HRF\*

HRF\*

Labelled CREDO® Dimensions (mm)	Reference Number	Stent Diameter (mm)	Stent Length (mm)	Recommended Vessel Diameter (mm)	Required Catheter for Delivery
3.0 × 15	01-000930	3.0	15	2.0–2.5	NeuroSpeed® PTA Balloon Catheter
3.0 × 20	01-000931	3.0	20	2.0–2.5	NeuroSpeed® PTA Balloon Catheter
3.5 × 15	01-000935	3.5	15	2.0–3.0	NeuroSpeed® PTA Balloon Catheter
3.5 × 20	01-000936	3.5	20	2.0–3.0	NeuroSpeed® PTA Balloon Catheter
4.0 × 15	01-000940	4.0	15	2.5–3.5	NeuroSpeed® PTA Balloon Catheter
4.0 × 20	01-000941	4.0	20	2.5–3.5	NeuroSpeed® PTA Balloon Catheter
4.5 × 15	01-000945	4.5	15	3.0–4.0	NeuroSpeed® PTA Balloon Catheter
4.5 × 20	01-000946	4.5	20	3.0–4.0	NeuroSpeed® PTA Balloon Catheter

Labelled NeuroSpeed® Dimensions (mm)	Reference Number	Balloon Diameter (mm)	Balloon Working Length (mm)	ID (Inch)	OD dist. / prox. (French)	Usable Length (cm)
1.5 × 8	01-000605	1.5	8	0.0165	2.7 / 3.7	150
2.0 × 8	01-000600	2.0	8	0.0165	2.7 / 3.7	150
2.5 × 8	01-000601	2.5	8	0.0165	2.7 / 3.7	150
3.0 × 8	01-000602	3.0	8	0.0165	2.7 / 3.7	150
3.5 × 8	01-000603	3.5	8	0.0165	2.7 / 3.7	150
4.0 × 8	01-000604	4.0	8	0.0165	2.7 / 3.7	150

All changes or modifications, may they be technical or other, or changes in the availability of products are expressly reserved.

\* HRF High Radial Force

Distributed by:



**ACANDIS GmbH**  
Theodor-Fahrner-Str. 6  
75177 Pforzheim  
Germany

Tel: +49 7231 155 00 0  
Fax: +49 7231 155 00 129  
E-Mail: info@acandis.com  
[www.acandis.com](http://www.acandis.com)