

AOHUA



Aohua Endoscopy Co., Ltd.

China

No.66, Lane133, Guangzhong Road,Minhang District,
Shanghai, P.R.China.(Postcode: 201108)
Tel: 86-21-52210929

Email: oversea-sales@aohua.com
website: www.aohua.com/en

See the Manual for details of contraindications or precautions.

Germany

Fichtenstrasse 27
85649 Brunnthal-Hofolding
Tel: +49(0)8104/8908-0

AOHUA

**Make endoscopic diagnosis and treatment
more accessible and convenient**

v8.0_2311_GB

AQ-300

Contribute our most advanced and innovative technologies to this 4K flag-ship system to bring you the experience of future endoscopy



4 CBI modes on 5LED

The AQ-300 provides four chromoendoscopy modes achieved through various combinations of its five LEDs light source. These modes offer efficient, rapid, and precise solutions for clinical challenges in various scenarios.



Intelligent

An Innovative Human-Computer Interaction Model

Discover the AQ-300's advanced intelligent operational flow, featuring capabilities like facial recognition, voice control, and customizable settings accessible via a remote touch control panel.



Colo Smart Assistance (CSA)

Adjustable Stiffness/Sync Force Transmission/Elastic Bending

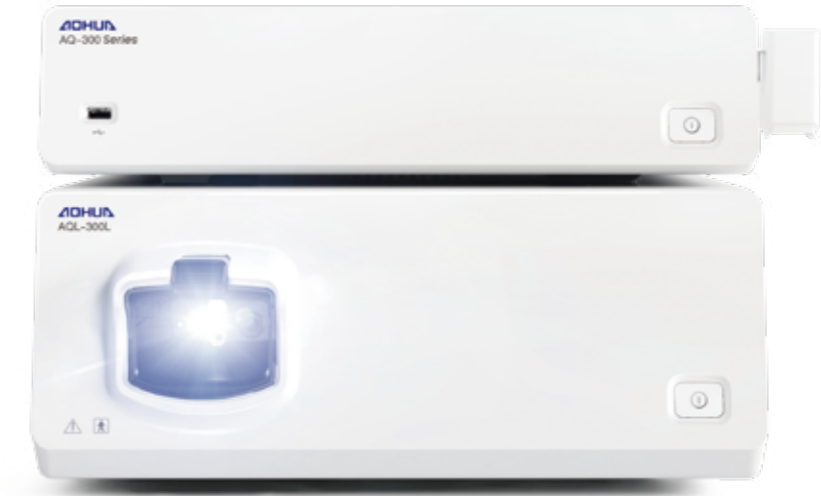


3 light guides

The endoscopic tip is designed with 3 light guides, ensuring brighter and more uniform illumination, especially for far-field areas.

Full Range Portfolio

Gastroscope Colonoscope Duodenoscope Dual focus Optical zoom Bronchoscope ENT



Functions and Features

Light Source	5LED
Chromoendoscopy	CBI Regular/CBI Indigo/CBI Aqua /CBI Amber
Image Enhancement	Structure/Edge/Combination
Brightness Adjustment	Automatic /Manual mode
Digital zooming function	1/1.2/1.5/1.8/2 times
Freeze and playback	Freezes the real-time image and plays it back.
IRIS	Peak/Average/Auto
USB Storage	High definition images and videos can be stored at any time
Dual Image Display	Display both WLI image and CBI image

UHD-GT/CL/ED

	Model	Working length	Total length	Distal End outer diameter	Insertion Tube outer diameter	Instrument Channel inner diameter	Depth of field	Field of View	Angulation range
Video Gastrosopes	*UHD-GT300	1050mm	1350mm	9.2mm	9.2mm	2.8mm	2-100mm	145°	U210°D90°L100°R100°
	*UHD-GT300T	1050mm	1350mm	9.8mm	9.6mm	3.2mm	2-100mm	145°	U210°D120°L100°R100°
	*UHD-GT300Q	1050mm	1350mm	10.2mm	9.6mm	2.8mm	1.5-7mm (Near) 7-100mm (Normal)	145°	U210°D90°L100°R100°
	*UHD-GT300Z	1050mm	1350mm	9.9mm	9.6mm	2.8mm	1.5-3mm (Close.) 3-100mm (Normal)	95° 145°	U210°D90°L100°R100°
Video Colonoscopes	*UHD-CL300I	1300mm	1600mm	12.2mm	12.0mm	3.7mm	2-100mm	170°	U180°D180°L160°R160°
	*UHD-CL300L	1650mm	1950mm	12.2mm	12.0mm	3.7mm	2-100mm	170°	U180°D180°L160°R160°
	*UHD-CL300TI	1300mm	1600mm	12.2mm	12.0mm	4.2mm	2-100mm	170°	U180°D180°L160°R160°
	*UHD-CL300TL	1650mm	1950mm	12.2mm	12.0mm	4.2mm	2-100mm	170°	U180°D180°L160°R160°
	*UHD-CL300QI	1300mm	1600mm	12.8mm	12.0mm	3.7mm	1.5-9mm (Near) 9-100mm (Normal)	160° 170°	U180°D180°L160°R160°
	*UHD-CL300QL	1650mm	1950mm	12.8mm	12.0mm	3.7mm	1.5-9mm (Near) 9-100mm (Normal)	160° 170°	U180°D180°L160°R160°
	*UHD-CL300ZI	1300mm	1600mm	12.8mm	12.0mm	3.7mm	2-3.5mm (Close.) 3-100mm (Normal)	90° 170°	U180°D180°L160°R160°
	*UHD-CL300ZL	1650mm	1950mm	12.8mm	12.0mm	3.7mm	2-3.5mm (Close.) 3-100mm (Normal)	90° 170°	U180°D180°L160°R160°
Video Duodenoscope	UHD-ED300V	1250mm	1530mm	13.5mm	11.2mm	4.2mm	4-60mm	100°	U120°D90°L90°R110°

(*: Forwarding water-jet)

AQ-200 Elite

Flexible configuration to meet the fast-changing market environment to better serve you and patients, giving an alternative to broaden your choice



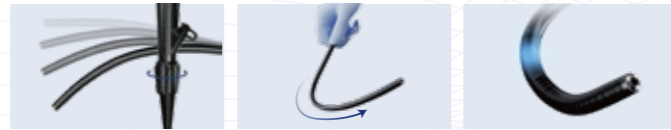
4 CBI modes on 5LED

The AQ-200 Elite provides four chromoendoscopy modes achieved through various combinations of its five LEDs light source. These modes offer efficient, rapid, and precise solutions for clinical challenges in various scenarios.



Colo Smart Assistance (CSA)

Adjustable Stiffness/Sync Force Transmission/Elastic Bending



3 light guides

The endoscopic tip is designed with 3 light guides, ensuring brighter and more uniform illumination, especially for far-field areas.

Inherit the legacy



Laser transmission and wireless power supply



Dual image display

Wider Selection

Gastroscope Colonoscope Duodenoscope Dual focus Optical zoom Bronchoscope ENT



Functions and Features

Light Source	5LED
Chromoendoscopy	CBI Regular/Indigo/Aqua/Amber
Image Enhancement	Structure/Edge/Combination
Brightness Adjustment	Auto/Manual
Digital Zoom	1/1.2/1.5/2x
IRIS	Peak/Average/Auto
Storage	USB
Dual Image Display	Display both WLI image and CBI image
User Profile	Customizable RFID card

UHD-GT/CL/ED

	Model	Working length	Total length	Distal End outer diameter	Insertion Tube outer diameter	Instrument Channel inner diameter	Depth of field	Field of View	Angulation range
Video Gastrosopes	*UHD-GT300	1050mm	1350mm	9.2mm	9.2mm	2.8mm	2-100mm	145°	U210°D90°L100°R100°
	*UHD-GT300T	1050mm	1350mm	9.8mm	9.6mm	3.2mm	2-100mm	145°	U210°D120°L100°R100°
	*UHD-GT300Q	1050mm	1350mm	10.2mm	9.6mm	2.8mm	1.5-7mm (Near) 7-100mm (Normal)	145°	U210°D90°L100°R100°
	*UHD-GT300Z	1050mm	1350mm	9.9mm	9.6mm	2.8mm	1.5-3mm (Close) 3-100mm (Normal)	95° 145°	U210°D90°L100°R100°
Video Colonoscopes	*UHD-CL300I	1300mm	1600mm	12.2mm	12.0mm	3.7mm	2-100mm	170°	U180°D180°L160°R160°
	*UHD-CL300L	1650mm	1950mm	12.2mm	12.0mm	3.7mm	2-100mm	170°	U180°D180°L160°R160°
	*UHD-CL300TI	1300mm	1600mm	12.2mm	12.0mm	4.2mm	2-100mm	170°	U180°D180°L160°R160°
	*UHD-CL300TL	1650mm	1950mm	12.2mm	12.0mm	4.2mm	2-100mm	170°	U180°D180°L160°R160°
	*UHD-CL300QI	1300mm	1600mm	12.8mm	12.0mm	3.7mm	1.5-9mm (Near) 9-100mm (Normal)	160° 170°	U180°D180°L160°R160°
	*UHD-CL300QL	1650mm	1950mm	12.8mm	12.0mm	3.7mm	1.5-9mm (Near) 9-100mm (Normal)	160° 170°	U180°D180°L160°R160°
	*UHD-CL300ZI	1300mm	1600mm	12.8mm	12.0mm	3.7mm	2-3.5mm (Close) 3-100mm (Normal)	90° 170°	U180°D180°L160°R160°
	*UHD-CL300ZL	1650mm	1950mm	12.8mm	12.0mm	3.7mm	2-3.5mm (Close) 3-100mm (Normal)	90° 170°	U180°D180°L160°R160°
Video Duodenoscope	UHD-ED300V	1250mm	1530mm	13.5mm	11.2mm	4.2mm	4-60mm	100°	U120°D90°L90°R110°

(*: Forwarding water-jet)

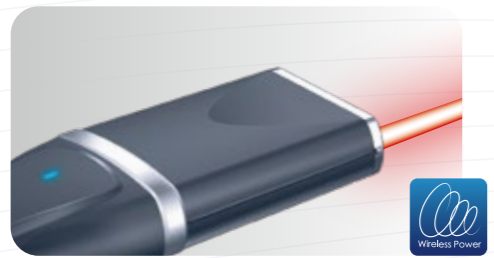
AQ-200

A One-stop, full HD and advanced video endoscopy system armed with a variety of exclusive features, to make your work easier



Waterproof and one-touch connection

Lower the risk of water damages by using our fully waterproof system! Shorten your exchange time between procedures with the one-touch connection. Benefit from our convenient features and lighten your workload!



Laser transmission and wireless power supply

8GB/s

8GB/s high speed laser transmission assures real-time image synchronization and improves anti-interference performance during complex interventions. By avoiding metal pin contacts, the Wireless power supply guarantees a long-term stable connection and improves the scope's sealing performance.



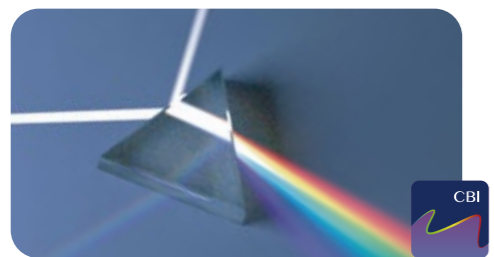
Full HD image resolution

Equipped with a 2-megapixel CMOS sensor, the endoscopes offer an impressive Full HD image resolution. Make use of our detailed and crystal clear image.



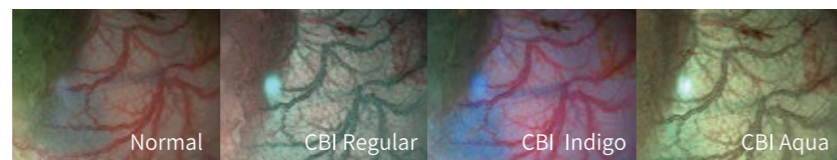
Dual image display

Having the white light image and a optical chromoendoscopy image on the same screen is an excellent educational tool to help demonstrate the difference shown on CBI mode. By using this exclusive feature you can shorten the learning curve, without the need to change between different light modes.



CBI chromoendoscopy

Optical staining technology CBI allows the best balance among illumination, vascular color contrast, and mucosal structure. This tool helps you detecting lesions and early cancer at the convenient way, by simply pressing a button.



Excel in maneuverability

The new ergonomics reduces fatigue and helps to reduce both, the patient's and your discomfort.

Functions and Features

Light Source	300W Xenon / 3LED
Chromoendoscopy	CBI Regular, CBI Indigo & CBI Aqua (3LED only)
Image Enhancement	Structure/Edge/Color
Brightness Adjustment	Auto/Manual
Digital Zoom	1/1.2/1.5/2x
IRIS	Peak/Average/Auto
Storage	USB
Dual Image Display	Two Images
User Profile	Customizable RFID card

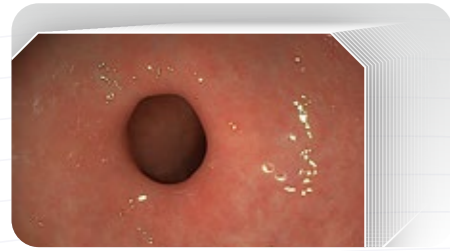
FHD-GT/CL

	Model	Working length	Total length	Distal End outer diameter	Insertion Tube outer diameter	Instrument Channel inner diameter	Depth of field	Field of View	Angulation range
Video	FHD-GT200	1050mm	1350mm	9.8mm	9.6mm	2.8mm	3-100mm	145° U210°D90°L100°R100°	
Gastrosopes	*FHD-GT200T	1050mm	1350mm	10.5mm	10.5mm	2.8mm	3-100mm	145° U210°D90°L100°R100°	
	FHD-CL200I	1300mm	1600mm	12.8mm	12.8mm	3.7mm	3-100mm	145° U180°D180°L160°R160°	
Video	FHD-CL200L	1650mm	1950mm	12.8mm	12.8mm	3.7mm	3-100mm	145° U180°D180°L160°R160°	
Colonoscopes	*FHD-CL200JI	1300mm	1650mm	12.8mm	12.8mm	3.7mm	3-100mm	145° U180°D180°L160°R160°	
	*FHD-CL200JL	1650mm	2000mm	12.8mm	12.8mm	3.7mm	3-100mm	145° U180°D180°L160°R160°	

(*: Forwarding water-jet)

AQ-100

A versatile FHD video endoscopy system satisfies multiple department with a variety of configuration



FHD image resolution

The AQ-100 adapts a FHD CMOS sensor to provide a high quality image. It produces a clear and sharp contrast on the edge between different tissues, displaying a superior image with more details to you.



Multiple light sources available

Both, 2LED and xenon light sources are available for your different needs. They can ensure satisfactory brightness and color rendering index to display a clinical image with real-life colors during routine- and complex procedures.



CBI optical chromoendoscopy

Optical chromoendoscopy CBI demonstrates a higher contrast between mucus and blood vessel, helping doctors to determine suspected lesion and estimate its stage.



Therapeutic procedures capable

A large working channel and waterjet facilities enable the scopes to be capable of doing complex therapeutic interventions. The 3.2mm and 4.2mm working channel can cater much more endoscopic accessories on the market. Small and short bending radius along with excellent angulation can help user to reach more blind and difficult areas.



Wider range of compatibility

Besides GI diagnostic and therapeutic endoscopes, the AQ-100 is also compatible with bronchoscopes and ENT scopes.

		VGT/VCC/VBC/VRL									
		Model	Working length	Total length	Distal End outer diameter	Insertion Tube outer diameter	Instrument Channel inner diameter	Depth of field	Field of View	Angulation range	
Video Gastrosopes		VGT-Q30	1050mm	1350mm	9.6mm	9.6mm	2.8mm	3-100mm	140°	U210°D90°L100°R100°	
		*VGT-Q30J	1050mm	1350mm	9.6mm	9.6mm	2.8mm	3-100mm	140°	U210°D90°L100°R100°	
		*VGT-1T30J	1050mm	1350mm	10.5mm	10.5mm	3.2mm	3-100mm	140°	U210°D90°L100°R100°	
		*VGT-Q50J	1050mm	1350mm	9.2mm	9.2mm	2.8mm	2-100mm	145°	U210°D90°L100°R100°	
		*VGT-1T50J	1050mm	1350mm	9.8mm	9.6mm	3.2mm	2-100mm	145°	U210°D90°L100°R100°	
Video Coloscopes		VCC-Q30I	1300mm	1600mm	12.8mm	12.8mm	3.7mm	2-100mm	170°	U180°D180°L160°R160°	
		VCC-Q30L	1650mm	1950mm	12.8mm	12.8mm	3.7mm	2-100mm	170°	U180°D180°L160°R160°	
		*VCC-Q30JI	1300mm	1600mm	12.8mm	12.8mm	3.7mm	2-100mm	170°	U180°D180°L160°R160°	
		*VCC-Q30JL	1650mm	1950mm	12.8mm	12.8mm	3.7mm	2-100mm	170°	U180°D180°L160°R160°	
		*VCC-1T30L	1300mm	1600mm	12.8mm	12.8mm	4.2mm	2-100mm	170°	U180°D180°L160°R160°	
		*VCC-Q50JI	1300mm	1600mm	12.2mm	12.0mm	3.7mm	2-100mm	170°	U180°D180°L160°R160°	
		*VCC-Q50JL	1650mm	1950mm	12.2mm	12.0mm	3.7mm	2-100mm	170°	U180°D180°L160°R160°	
	*VCC-1T50JI	1300mm	1600mm	12.2mm	12.0mm	4.2mm	2-100mm	170°	U180°D180°L160°R160°		
	*VCC-1T50JL	1650mm	1950mm	12.2mm	12.0mm	4.2mm	2-100mm	170°	U180°D180°L160°R160°		

(*: Forwarding water-jet)

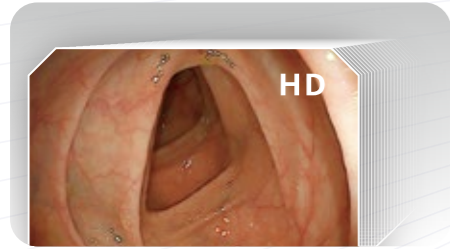
VME-2800

A cost-effective HD video endoscopy system with high standard and stable performance



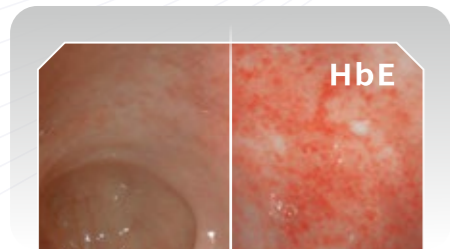
Cost-effective light source

More than 10,000 hours of life span for the LED light source, reduces the repair and maintenance cost for you, without any compromise on brightness and image quality. The LED light source is a balanced option between cost-effectiveness and image quality.



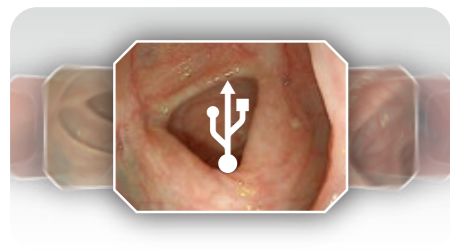
HD image quality

Value-end targeted model equipped with HD image resolution exceeds user expectation and contributes to higher accuracy and better diagnosis.



Versatile digital enhancement

Integrates digital chromoendoscopy technology HbE (Hemoglobin Enhancement) to distinguish vascular pattern from mucus to help doctors locate suspected lesion more effectively. Structure and edge enhancement provides a wide option on different spatial and contrast images for different needs.



Stable system performance

Hardware driven platform optimizes system stability, but at the same time includes necessary functions on the same system. Clinical image and video can be saved and exported to external storage, for clinical study or research.



Versatile compatibility

A single system can be shared in between GI department, pulmonology department and ENT department.

VME-92S/98S/1300S/1650S									
	Model	Working length	Total length	Distal End outer diameter	Insertion Tube outer diameter	Instrument Channel inner diameter	Depth of field	Field of View	Angulation range
Video	VME-92S	1050mm	1350mm	9.0mm	9.0mm	2.8mm	3-100mm	140°	U210°D90°L100°R100°
Gastrosopes	VME-98S	1050mm	1350mm	9.6mm	9.6mm	2.8mm	3-100mm	140°	U210°D90°L100°R100°
Video	VME-1300S	1300mm	1600mm	12.8mm	12.8mm	3.7mm	3-100mm	140°	U180°D180°L160°R160°
Coloscopes	VME-1650S	1650mm	1950mm	12.8mm	12.8mm	3.7mm	3-100mm	140°	U180°D180°L160°R160°

MBC

A handheld Laryngoscope with great mobility and versatility, that perfectly meets the daily use

Capable of diagnosis and therapeutic

Three different scopes in various sizes are available. The 2.0mm instrument channel enables user to do not only diagnostic procedure but also therapeutic procedures in their daily work. The 4mm diameter insertion tube has the benefit of even reaching down to lower level of the bronchus.

Cost effective

The MBC has a external light source which is power-supplied by a rechargeable lithium-ion battery. Clinical videos and images can be recorded and safed on a 16GB SD card. The mobile 3.5 inches screen has a clear HD resolution.

Applicable in various departments

Covers multiple departments in the hospital including ICU, emergency departement, patient wards, respiratory, anesthesiology and ENT.



Features

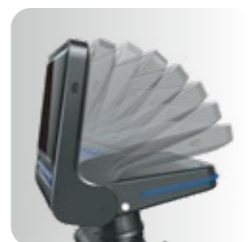
- High quality image resolution.
- Portable recording of images and videos with a 16GB SD-card for storing.
- Small Diameter of 4.0mm for easy Intubation available. Three different sizes for your Individual use.
- Multi-functional design, equipped with a 2.0mm big working channel with an advanced suction for BAL, Intubation, and foreign body removal.
- Clear visualization over a 3.5 inch monitor and a long-life LED light source.
- More than 4-hour continuous use with a rechargeable lithium-ion battery. Small size, easy to carry and storage.
- Easy to operate with a mobile and ergonomic handle.
- Wide range of usage and applicable to ICU, emergency departement, patient wards, respiratory, anesthesiology and ENT.



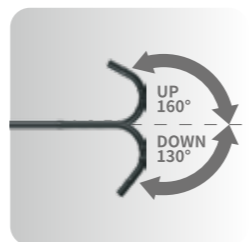
Instrument Channel



External LED Light Source



High-Definition Screens



Bending Section



16GB SD Card

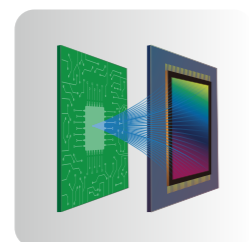
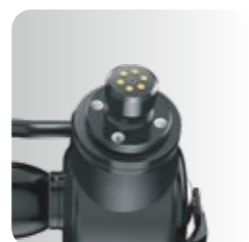


Image Sensor



Detachable Suction Valve



High Quality Video Connector

Item	Parameter
Monitor	3.5 inches, detachable
Memory	16GB SD card
Light source	LED, detachable
Battery	Lithium-ion rechargeable

MBC-4/5/6								
Model	Working length	Total length	Distal End outer diameter	Insertion Tube outer diameter	Instrument Channel inner diameter	Depth of field	Field of View	Angulation range
MBC-4	600mm	980mm	4.0mm	4.0mm	N.A	3-50mm	100°	U160°D130°
MBC-5	600mm	980mm	5.2mm	4.8mm	1.5mm	3-50mm	100°	U160°D130°
MBC-6	600mm	980mm	5.8mm	5.7mm	2.0mm	3-50mm	100°	U160°D130°

AFP-1

Endoscopic Irrigation Pump



- Press and flush, or automatically stop after 20 seconds continuous flushing to avoid water waste.
- 9-level water flow control, maximum 450ml/m.
- Warning for loose cover.
- Detachable pump head, easy to clean.
- Compact and easy to install.

- Fully automatic leakage test and monitoring.
- Widely compatible with Aohua scopes and other major brands.
- Compact, easy to install and convenient to use (with a simple press on a button).
- iF design awarded.

ALD-1

Automatic Leakage Tester



ACD-1

Endoscopic CO₂ Insufflation Device



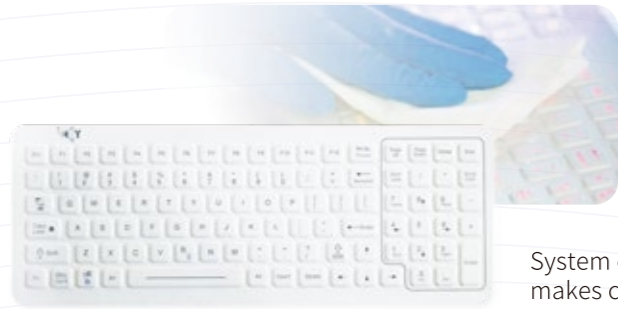
- Automatic air flow regulation.
- Compatible with both CO₂ central supply and gas tank.
- Compact, easy to install and convenient to use (with a simple press on a button).

- 32-inch 4K ultra high definition medical grade brighter monitor.
- The 27-inch professional large medical monitor can display images more clearly.
- 1920x1080P Full HD resolution can perfectly show the image created by the 2 mega-pixel CMOS imaging sensor and endoscope.
- The visual narrow frame design exhibits a light feeling.
- It is easy to install, supporting AQ-200 trolley and the rotating bracket.
- 178° angle of view.

Medical Monitor



| Waterproof medical keyboard



System control via keyboard can be more convenient. The waterproof design makes cleaning and disinfection easy and safe.

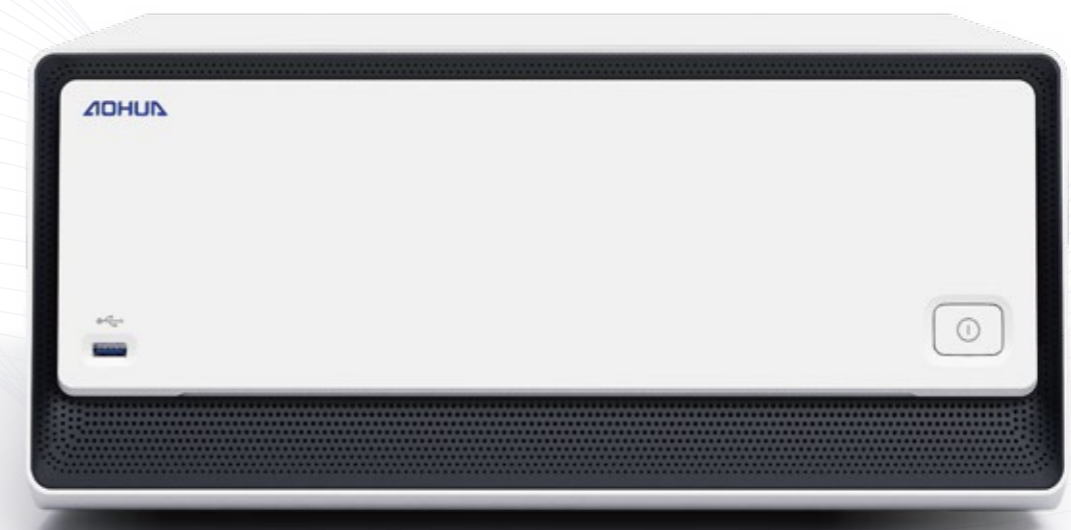
| Trolley



The whole endoscopy system and peripheral devices can be accommodate to a single trolley, with an adjustable rack and protection of the wheel break.

NEW PRODUCT ON THE HORIZON

EndoMate



To experience our latest products and technologies, visit our booth or contact our delegate for demo



Pulmonology, ENT

