

VME-2800 Endoscopy System

| | | |
|-------------|--------------------------|---|
| Observation | Video | DVI, CVBS, Y/C, R, G, B, V, H/CS |
| | Image enhancement | E-stressed mucosal morphology or profile, to increase the sharpness of endoscopic images. Profile enhance |
| | Color tone adjustment | "R"、"B" adjustment: ± 50 steps |
| | Brightness adjustment | "Y" adjustment: ± 50 steps |
| | Freeze | Endoscopic images can be frozen |
| | Metering mode | Average; Peak |
| Power | White balance adjustment | Press the white balance switch |
| | Voltage | ~110V/220V AC (± 10%) |
| | Frequency | 50Hz/60Hz |

| | | | |
|------------|-----------------------|--|------------|
| Lighting | Bulb | LED lamp | Xenon lamp |
| | Average life of bulb | 10000hours | 500hours |
| | Color temperature | 5200K ± 500K | ≥ 5000K |
| | Emergency lamp | | LED lamp |
| Air pump | Brightness adjustment | Optical Aperture control | |
| | Air pressure | 30-80kPa | |
| | Air flow | 4L/min-10L/min | |
| Power | Level | High / Low | |
| | Voltage | ~110V/220V AC (± 10%) | |
| appearance | Frequency | 50Hz/60Hz | |
| | Size | 420 (length) x 390 (width) x 165 (height) mm | |

Video Gastroscope

VME-98S

| | |
|--------------------------------|-------------|
| Model | VME-98S |
| Working length | 1050mm |
| Depth of field | 3-100mm |
| Range of bending | U210° D90° |
| Range of bending | L100° R100° |
| Diameter of insertiontube | φ 9.6mm |
| Diameter of instrument channel | φ 2.8mm |
| View of field | 140° |

VME-92S

| | |
|--------------------------------|-------------|
| Model | VME-92S |
| Working length | 1050mm |
| Depth of field | 3-100mm |
| Range of bending | U210° D90° |
| Range of bending | L100° R100° |
| Diameter of insertiontube | φ 9.0mm |
| Diameter of instrument channel | φ 2.8mm |
| View of field | 140° |

Video Colonoscope

VME-1300S

| | |
|--------------------------------|-------------|
| Model | VME-1300S |
| Working length | 1300mm |
| Depth of field | 3-100mm |
| Range of bending | U180° D180° |
| Range of bending | L160° R160° |
| Diameter of insertiontube | φ 12.8mm |
| Diameter of instrument channel | φ 3.7mm |
| View of field | 140° |

VME-1650S

| | |
|--------------------------------|-------------|
| Model | VME-1650S |
| Working length | 1650mm |
| Depth of field | 3-100mm |
| Range of bending | U180° D180° |
| Range of bending | L160° R160° |
| Diameter of insertiontube | φ 12.8mm |
| Diameter of instrument channel | φ 3.7mm |
| View of field | 140° |

Aohua Endoscopy

Aohua Endoscopy Co., Ltd. was originally incorporated in 1994, a globally-renowned medical endoscope manufacturing company with products consisting of video endoscopy system, endoscopy peripheral equipment, endoscopic diagnosis and treatment device etc. And sales network covering more than 80 countries and regions in the world. Our mission is to take the lead of endoscope technology innovation and push forward the technological progress of endoscopic diagnosis and treatment technology. We will proactively and constantly serve the cause of human health.

To date, more than 10,000 hospitals around the world are using Aohua endoscopy equipment. It is precisely because of the existence of Aohua who is providing abundant, easy to use and affordable endoscopic products and services that thousands of hospitals can carry out endoscopic diagnosis and treatment services. Aohua now provides end-to-end solution and service to end-users with digestive endoscopy equipment, endoscopic diagnosis and treatment consumables, surgical endoscopy products and peripheral devices.



High Definition, High Compatibility, High Cost-effective

+86-21-6768 1018

Aohua Endoscopy Co.,Ltd.
 Location: NO.660 Shengang Road, Songjiang District, Shanghai, 201612, P.R.China)
 Postcode: 201612
 Fax: 021-67681013
 Email: oversea-marketing@aohua.com

www.aohua.com



CE 0197
 ISO 9001/ISO 13485 Certified

VME-2800
 Endoscopy System

VME-2800

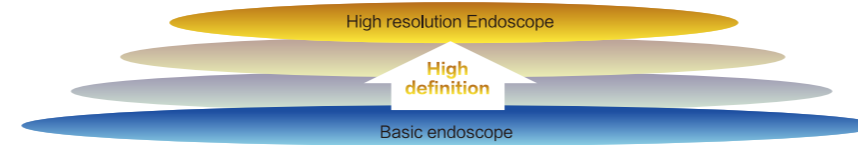
Separating design

Aohua VME-2800 HD endoscopy system delivers high definition and exceptional image quality with separating imaging processor and light source. The light source of VME-2800 series has two options: LED light source and Xenon light source.



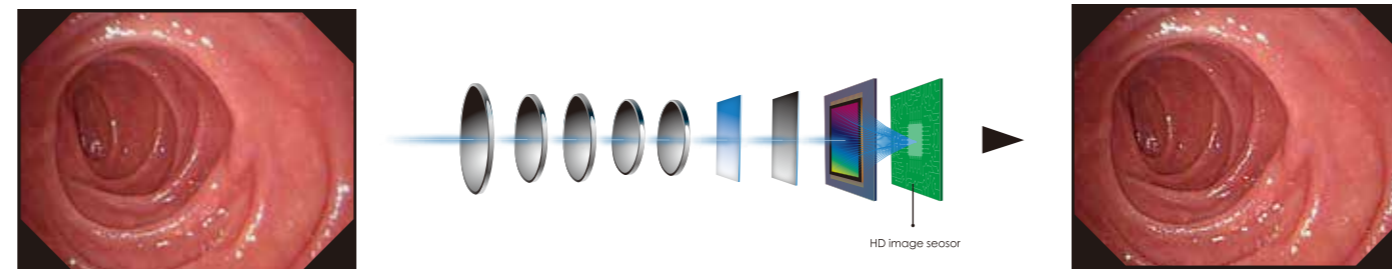
Breaking the routine The new age of HD endoscope

Aohua, originally incorporated in 1994, serves customers with innovative and dedicated technology plus excellent product quality, having become the world's leading provider of integrated endoscopy solutions. It is the first time to break the routine to make the most basic products with more cost-effective



HD Image Sensor

High resolution and digital processing system to protect the endoscopic color and present the high-definition image.



Motus 3.0 platform

Higher data processing capacity

Higher data processing capacity, compared to 2.0 platform, it has more than 10 times computing power, 5 times memory bandwidth and 8 times memory capacity. All this makes it possible to easily process real-time image data with higher resolution and more computing power (such as HbE, Enh, etc.)

Fully digital image processing

Fully digital image processing, it has enhanced the image signal's SNR and reliability compared to 2.0 platform due to the deletion of the A/D process; Motus 3.0 platform features a brand-new image sensor with higher image resolution, lower power consumption, and better photosensitivity.

High modularization

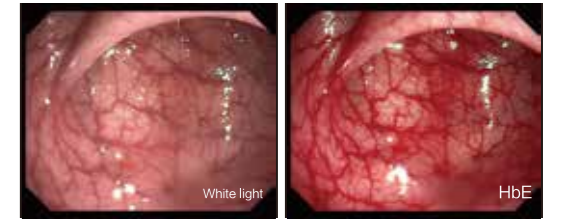
Its high modularization enables our latest research results into other Aohua products, making sure a high compatibility for all product lines.

A variety of interfaces

Motus 3.0 platform provides a variety of interfaces to facilitate connections with different equipment in the operating room.

(HbE) Hemoglobin Enhancement

The powerful upgraded HbE display function in VME-2800 can better highlight the hemoglobin in the blood.



Outline & Structure Enhancement

The outline enhancement function can give prominence to the scope and contour of pathological tissues, while the structure enhancement function underscores the blood vessels and fibrous structure, making the images more clear and sharper.

Tonal Adjustment

Tone (R/B) and Brightness (Y) adjustment, User can adjust the color according to their preference.



IRIS

Average: Choose it when focus on the center of the image; Peak: Choose it when focus on the part which is more brightest.

USB

HD video and photo images can be stored, easy to be moved and checked. Support with 500G external disk.

Freeze

You can freeze the image in real time and view the frozen image through playback. A new generation of upgrades with frozen images are not unreal.



Stable Images

A new generation product with the function of automatically eliminating the defective pixels in the image (bright spots, dark spots), it makes the image more stable and clear.

Ergonomic Handle

The ergonomic and easy-to-operate handle design allows for more comfortable holding and operating.



White Balance Cap

Ergonomic rotating makes it easy to use.