



GRA MEDICA[®]

Innovative Foot & Ankle Solutions
Better Patient Outcomes

Product Guide

HyProCure I & II[®]

Extra-Osseous
Talotarsal Stabilization

Opti-Toe[®]

Hammertoe
Correction

Osteo-Wedge 2[®]

1st Ray/Bunion
Correction

Soleus[®] Foot Care Collection

Skin & Nail
Restoration System

Together We Can Change Lives, One Step at a Time[®]



Re

Think
Develop
Invent

What's Inside

- 2 About Us**
- 5 HyProCure**
Sinus Tarsi Stent
- 7 HyProCure II**
Sinus Tarsi Stent
- 9 Opti-Toe**
Hammertoe Correction
- 11 Osteo-Wedge²**
1st Ray/Bunion Correction
- 14 Soleus Foot Care Collection**
Nail & Skin Restorative Collection
- 16 Procedural Instruments**
Scissors & Forceps
- 17 Patient Education**
Bone Models

When **Medical Technology** is Combined with **Surgical Expertise** & the Desire to Change Lives, There is **Endless Potential.**

About Us



Our Mission

Re-Think, Re-Develop & Re-Invent Traditional Treatment Methods to Create Improved Physician Options that Produce Better Patient Outcomes.



Our Vision

Together We Can Change Lives, One Step at a Time.®



Our Passion

Developing Better, Simpler, More Efficient Ways to Achieve Superior Results.

Our Story

Since 2003, GraMedica has brought innovation to foot and ankle care. Our uniquely designed products provide better physician options that create better patient outcomes than standard traditional treatment methods.

GraMedica was founded by Dr. Michael E. Graham, a board certified foot and ankle surgeon who had grown tired of the limitations and high removal rates of available sinus tarsi implants.

His mission to create a better device ultimately yielded a unique new stent design with the ability to rest deeper within the sinus tarsi, resisting displacement, yet still allowing for normal range of motion.

The stent—HyProCure— has gone on to become the most successful sinus tarsi implant to date, with clinical studies illustrating a 94% success rate.

Building on HyProCure's success, HyProCure II was introduced with enhanced geometric features and a more ergonomic instrument set. Innovation continued with Opti-Toe for hammertoe correction, Osteo-Wedge II for 1st ray/bunion correction and the Soleus Foot Care Collection, a uniquely formulated skin & nail restoration system.

Re

Think
Develop
Invent

IM PLAN TOL OGGY

BETTER | SIMPLER | MORE EFFICIENT

We Create **Flexible, Innovative Implantology** Lines that are Designed to Work Alone, or Function Together to Create **Optimum Results** for Each & Every Patient.





HyProCure®

Sinus Tarsi Stent & Instrument Set | Extra-Osseous Talotarsal Stabilization

Stent Material: Medical Grade Titanium | Instrument Set Material: Surgical Stainless Steel | Manufactured: USA



94% Success Rate

vs. Other Subtalar Devices with Removal Rates as High as 100%

J Foot Ankle Surg. 2012; 51 (1); 23-29.
J Foot Ankle Surg. 2013; 52 (2); 195-202.

51%

Decreased Strain to
Posterior Tibial Tendon
J Foot Ankle Surg. 2011; 50 (6): 676-81.

33%

Decreased Strain to
the Plantar Fascia
J Foot Ankle Surg. 2011; 50 (6): 682-6.

Decreased Pressure

Within the Tarsal Tunnel & Porta Pedis
J Foot Ankle Surg. 2011; 50 (1): 44-9.

Correction

of Sagittal & Transverse Plane
J Foot Ankle Surg. 2012; 51 (5): 548-55.

Normalization

of the Navicular Position
J Foot Ankle Surg. 2011; 50 (5): 551-7.

The Key Difference

Placement & Shape

Its design enables it to be inserted deeper into the sinus tarsi, restoring normal range of motion, rather than limiting it.

Design Features

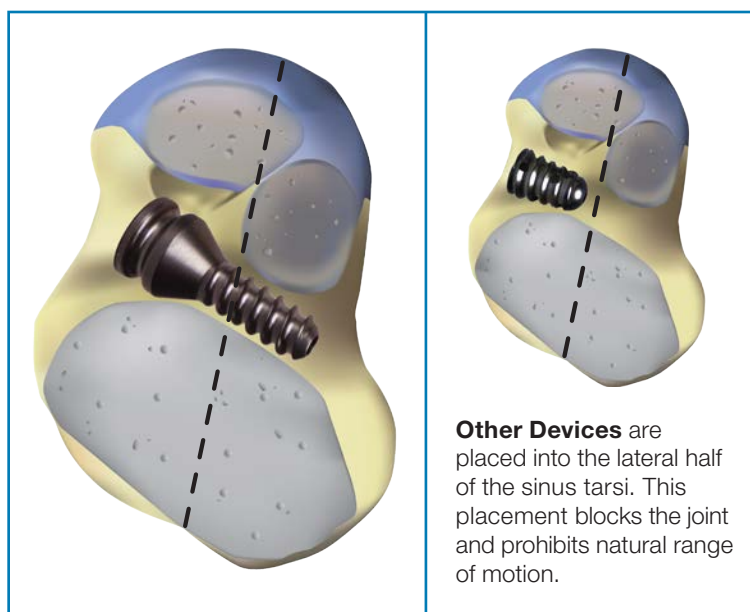
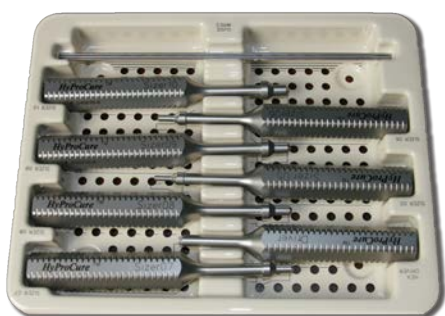
- + Smooth, toroid shaped head re-establishes the axis of the subtalar joint
- + Cannulated to facilitate precise positioning
- + Threads allow tissues to anchor medially reducing displacement rate

Additional Benefits

- + Minimally invasive treatment option
- + Can be used on pediatric & adult patients
- + Procedure can typically be performed in less than 20 minutes

HyProCure Instrument Set

Includes: trial sizers, driver and guide wires



Before



The Results



RE-BALANCED & RESTORED

Description	Item #
HyProCure Instrument Set	HYP-INS-TRAY
HyProCure Sizer 05	CP 15-05-FG
HyProCure Sizer 06	CP 15-06-FG
HyProCure Sizer 07	CP 15-07-FG
HyProCure Sizer 08	CP 15-08-FG
HyProCure Sizer 09	CP 15-09-FG
HyProCure Sizer 10	CP 15-10-FG
HyProCure Driver	HD-5-FG
HyProCure Guide Wires-(Set of 3)	HYP-GuideWires

Description	Item #
HyProCure Sinus Tarsi Stent	
HyProCure Size 05	HYP-05
HyProCure Size 06	HYP-06
HyProCure Size 07	HYP-07
HyProCure Size 08	HYP-08
HyProCure Size 09	HYP-09
HyProCure Size 10	HYP-10
Procedure Instrumentation	
HYP Sinus Tarsi Decompression Scissors	HYP-ST-DS

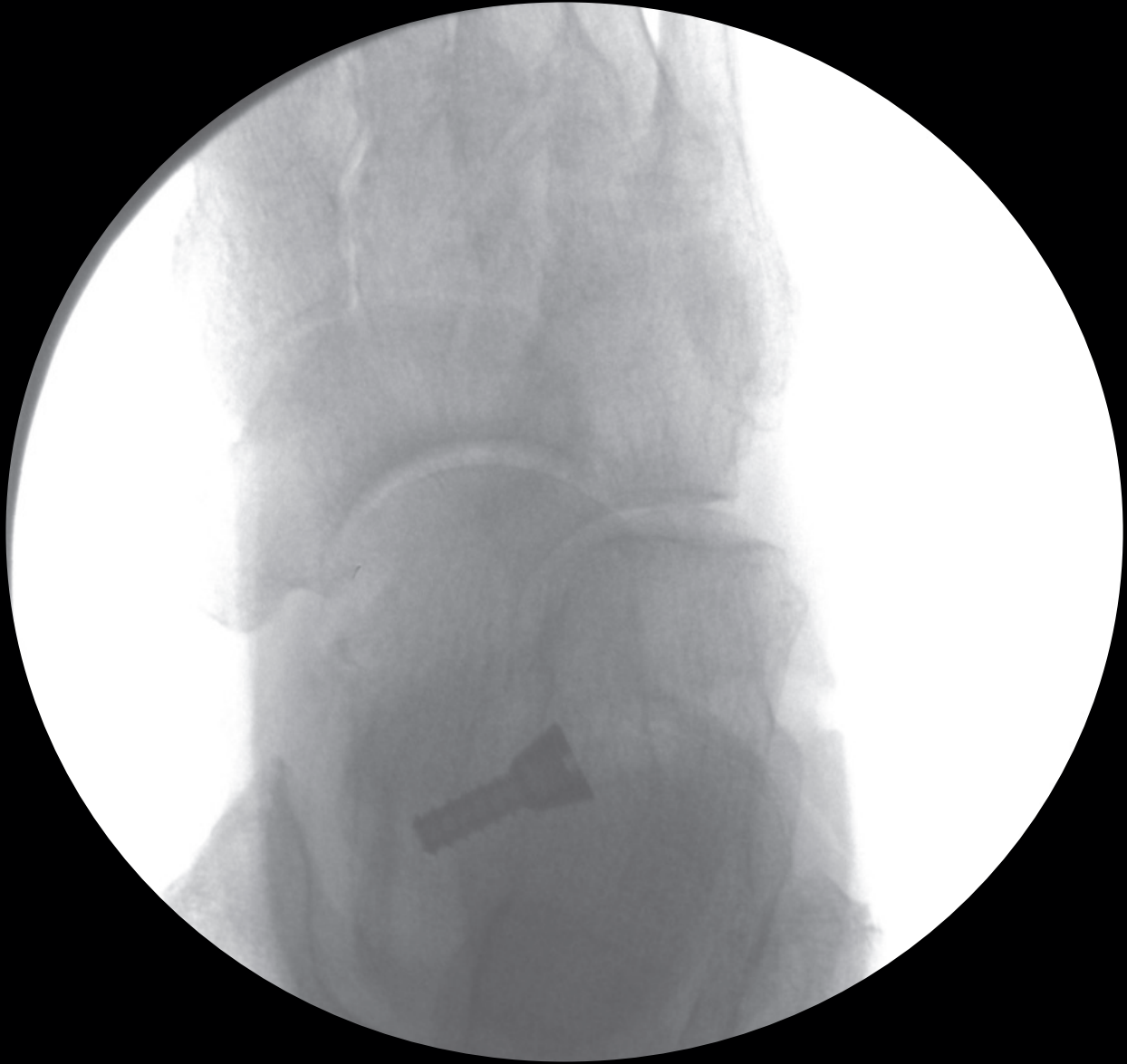
May not be available for sale in all countries. For detailed cleaning and sterilization instructions of instruments, please refer to the inserts included in the shipping container.



HyProCure II[®]

Sinus Tarsi Stent & Instrument Set | Extra-Osseous Talotarsal Stabilization

Stent Material: Medical Grade Titanium | **Instrument Set Material:** Surgical Stainless Steel | **Manufactured:** USA



Same Great Results—New Enhanced Design!

Inserted deeper into the sinus tarsi | Restores normal range of motion | Resists backout

Minimally invasive option | Safe to use in pediatric & adult patients | Procedure time typically less than 20 minutes

The Key Difference

Enhanced Stent & Instrument Design—Same Great Results

Modeled after HyProCure—the sinus tarsi stent with the highest success rate—HyProCure II has been enhanced to further resist back-out and optimize stent placement.

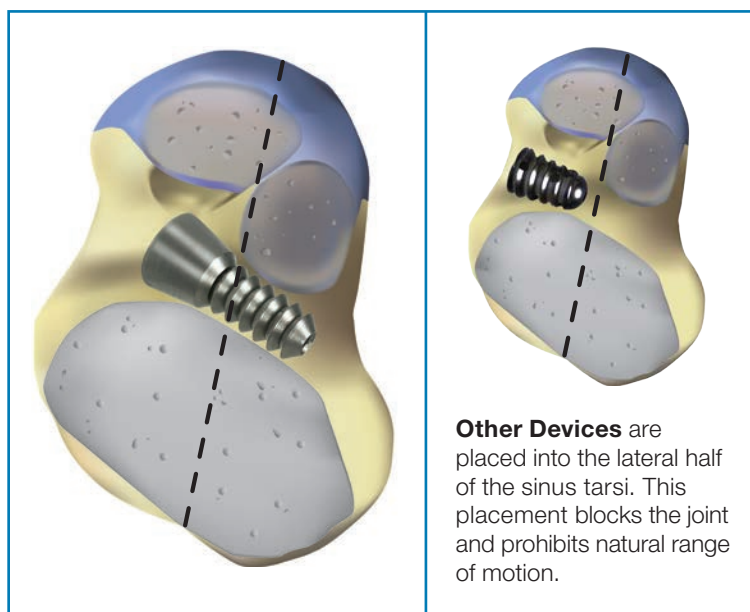
Enhanced Stent Features

+ New! Internal threading in the lateral end assists in accurate device placement.

+ New! Notches in the head interact with the driver positioning sleeve to assist in stent disengagement.

+ New! Radial threading in the shaft provides superior soft tissue anchoring and adherence to minimize device displacement.

+ New! Decreased taper reduces potential lateral device displacement.



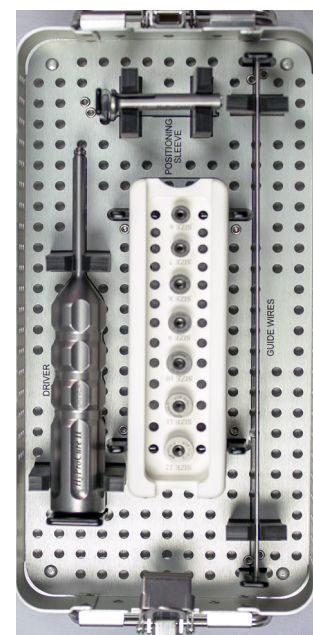
Other Devices are placed into the lateral half of the sinus tarsi. This placement blocks the joint and prohibits natural range of motion.

Enhanced Instrument Set Features

+ New! Positioning sleeve holds stent in place while the driver is removed.

+ New! Driver handle provides better gripping surface.

+ New! Threaded driver tip for better control during stent insertion.



Description	Item #
HyProCure II Instrument Tray	HYPII-INS-Tray
HYP II Trial Sizer 06	HYPII-TS-06
HYP II Trial Sizer 07	HYPII-TS-07
HYP II Trial Sizer 08	HYPII-TS-08
HYP II Trial Sizer 09	HYPII-TS-09
HYP II Trial Sizer 10	HYPII-TS-10
HYP II Trial Sizer 11	HYPII-TS-11
HYP II Trial Sizer 12	HYPII-TS-12
HyProCure II Driver	HYPII-5
HyProCure II Positioning Sleeve	HYPII-PS
HyProCure Guide Wires (Set of 3)	HYP-GuideWires

Description	Item #
HyProCure II Sinus Tarsi Implant System	
HyProCure II Sinus Tarsi Stent Size 06	HYPII-06
HyProCure II Sinus Tarsi Stent Size 07	HYPII-07
HyProCure II Sinus Tarsi Stent Size 08	HYPII-08
HyProCure II Sinus Tarsi Stent Size 09	HYPII-09
HyProCure II Sinus Tarsi Stent Size 10	HYPII-10
HyProCure II Sinus Tarsi Stent Size 11	HYPII-11
HyProCure II Sinus Tarsi Stent Size 12	HYPII-12
Procedure Instrumentation	
HYP Sinus Tarsi Decompression Scissors	HYP-ST-DS

May not be available for sale in all countries. Not available in Canada. For detailed cleaning and sterilization instructions of Instruments, please refer to packaging insert.



Opti-Toe®

Interphalangeal Stabilization System | Hammertoe Correction

Implant Material: Medical Grade Titanium | **Manufactured:** USA



The Key Difference

Two-Piece Design Minimizes Tissue Trauma During Insertion Process

when compared to single piece devices.

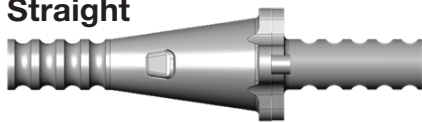
Further Key Advantages

- + No refrigeration required
- + Does not require power equipment for insertion
- + Does not require single use instruments for insertion

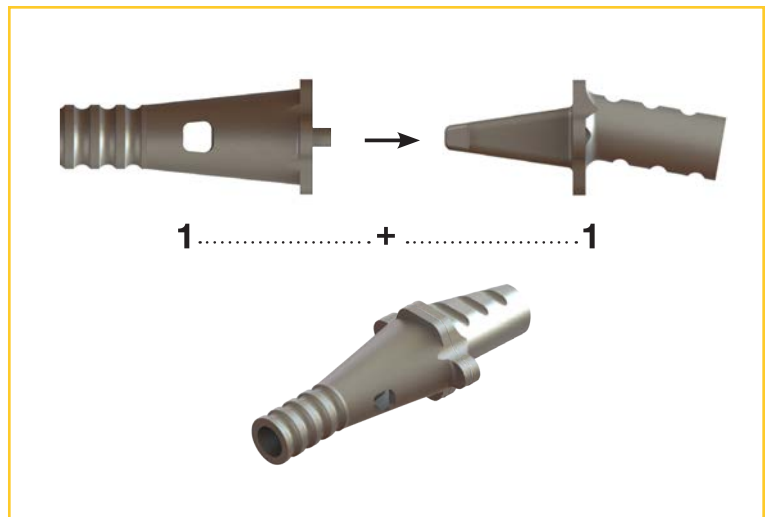
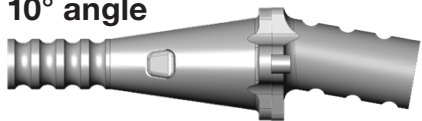
Additional Benefits

- + Cannulated for optional/additional k-wire
- + Competitively priced
- + Simple site preparation
- + Available in two options

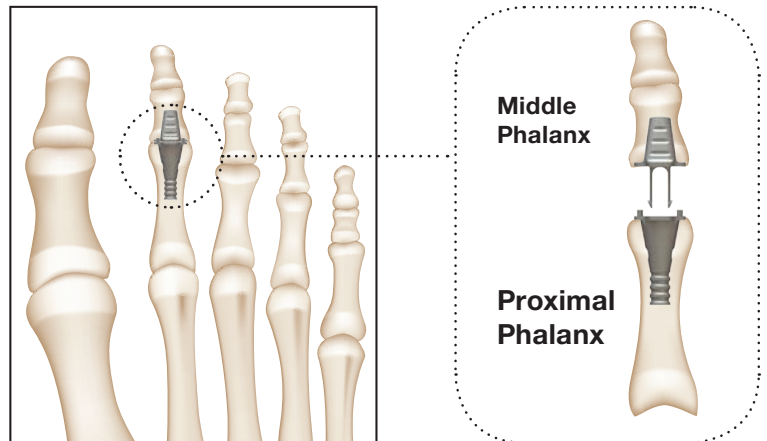
Straight



10° angle



Opti-Toe locks the middle phalangeal component into the chamber of the proximal phalangeal component to stabilize the joint.



Description	Item #
Opti-Toe® Implant	
Straight	OT-SS
10° Angle	OT-SA

Made in the USA. Not available in all countries. Not available in Canada. Federal law (USA) restricts this device to sale and use by, or on the order of a physician. Refer to package insert for instructions for use.

Request Your FREE Demo Kit

We are offering first time users the opportunity to try before you buy.

Request Yours Today!

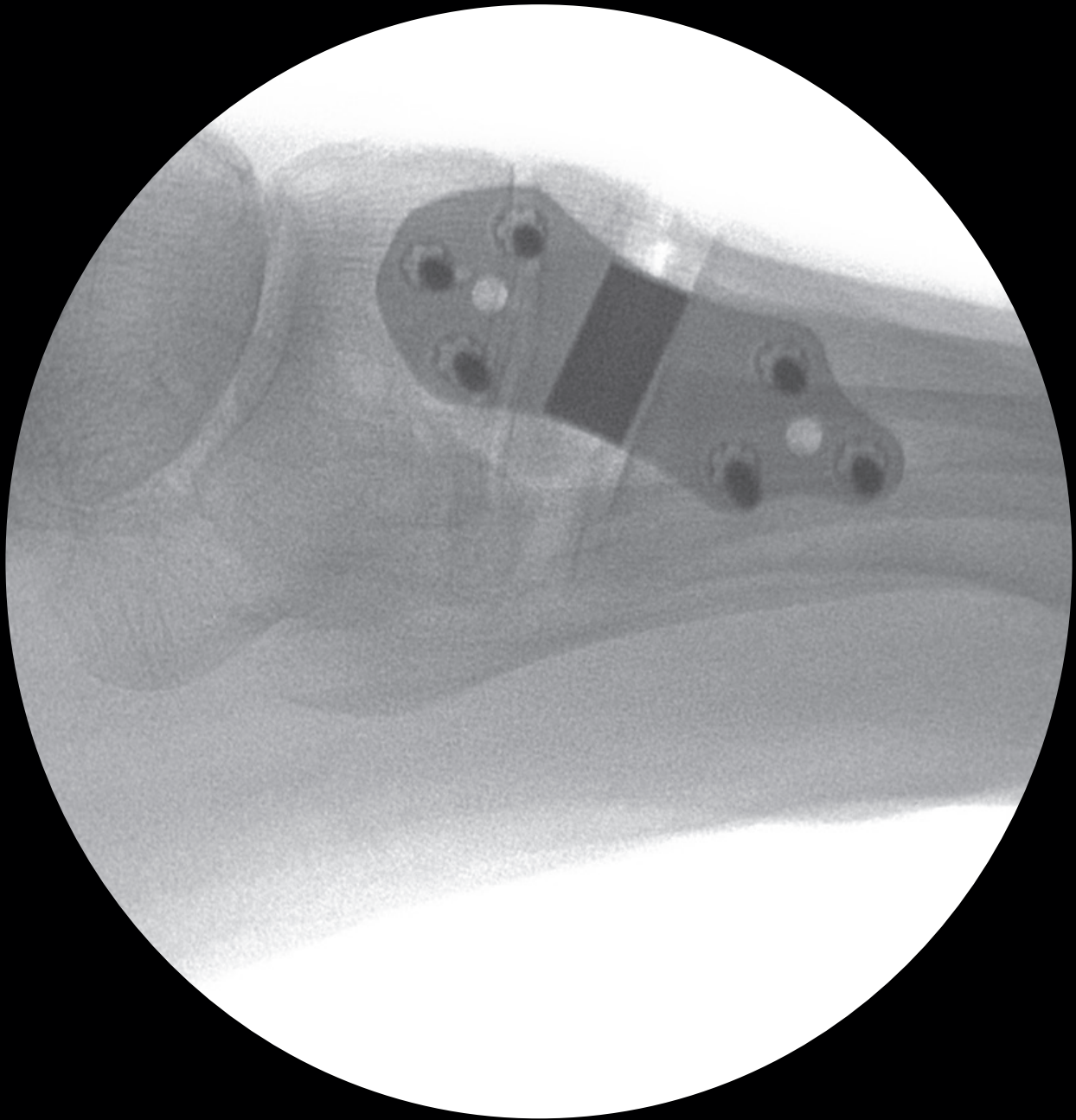
Info@GraMedica.com



Osteo-Wedge²[®]

Open-Wedge Bone Locking Plate System | Bunion Correction

Implant Material: Medical Grade Titanium | **Manufactured:** USA



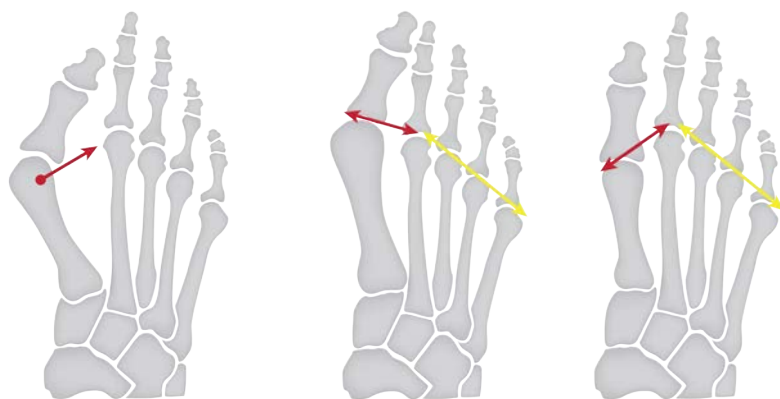
The Key Difference

Multi-use Device, Minimal Bone Removal Required

when compared to similar devices.

Further Key Advantages

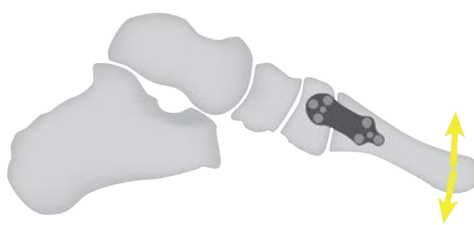
- + Open wedge design prevents excessive shortening of the first metatarsal
- + Thin and low profile (only 1 mm thick) with angular bends near the proximal-to-distal length facilitates transverse plane correction of larger intermetatarsal angles.
- + Cortical screws with threaded heads reduce the potential of irritation (the leading cause for screw removal).
- + Easy surgical exposure
- + Applied dorsomedially to counteract weightbearing forces



Offers transverse/
triplane correction

Shortens a
long metatarsal

Lengthens a
short metatarsal



Allows for sagittal plane correction



Corrected with
Osteo-Wedge

Description	Item #
Osteo-Wedge 2 Instruments	OW-INST-KIT
2.4mm x 12mm Temporary Tack	
Depth Gauge	
Depth Gauge Sleeve	
Driver	
Drill Guides	
Screw Retainer Sleeve	
Osteo-Wedge 2 Implant	
Osteo-Wedge 2 Flat Plate, Small	GM-503-00
Osteo-Wedge 2 3 Degree Ang Plate, Small	GM-503-03
Osteo-Wedge 2 6 Degree Ang Plate, Small	GM-503-06
Osteo-Wedge 2 9 Degree Ang Plate, Small	GM-503-09
Osteo-Wedge 2 Metatarsal Plate-30 Angled	GM-503-30
Procedure Instrumentation	
2.4mm x 12mm Temporary Tack	OW2.4TT-12MM

Description	Item #
Locking Bone Screw 2.5mm	
2.5mm x 08mm	OW2.5LBS-08MM
2.5mm x 10mm	OW2.5LBS-10MM
2.5mm x 12mm	OW2.5LBS-12MM
2.5mm x 14mm	OW2.5LBS-14MM
2.5mm x 16mm	OW2.5LBS-16MM
2.5mm x 18mm	OW2.5LBS-18MM
2.5mm x 20mm	OW2.5LBS-20MM
2.5mm x 22mm	OW2.5LBS-22MM
Locking Bone Screw 3mm	
3mm x 08mm	OW3.0LBS-08MM
3mm x 10mm	OW3.0LBS-10MM
3mm x 12mm	OW3.0LBS-12MM
3mm x 14mm	OW3.0LBS-14MM
3mm x 16mm	OW3.0LBS-16MM
3mm x 18mm	OW3.0LBS-18MM
3mm x 20mm	OW3.0LBS-20MM
3mm x 22mm	OW3.0LBS-22MM

Made in the USA. Not available in all countries. Not available in Canada. Federal law (USA) restricts this device to sale and use by, or on the order of a physician. Refer to package insert for instructions for use.

Re

Think
Develop
Invent

FOOT CARE

BETTER QUICKER RESULTS

Soleus® Foot Care Collection

Antifungal Skin & Nail Restoration System

Medical Grade Antifungal Ingredients: Urea & Tolnaftate | **Moisturizing Ingredients:** Glycerin & Petrolatum

Naturally Derived Ingredients: Tea Tree, Lavender & Clove Oil | **Made in the USA**

Adds More to Your Practice Revenue

Key Advantages

- + Purchase on consignment
- + The only system that includes all of the most effective ingredients to combat fungal infections
- + Patients purchase directly from your office instead of a drug store or pharmacy
- + You set a selling price your patients can afford
- + Marketing materials are included



Soleus Compared to Other Common Treatments

	Soleus	RX Oral	RX Topical	Laser Treatment
Pricing	Selling price is determined by practice \$12-\$60 per kit.	Up to \$14.00 per pill/up to \$4,200 per month.	\$400-\$600 per 4 ml bottle.	\$500-\$1,200 per treatment.
Success Rate	Ingredients are widely recognized as effective in the treatment of fungal skin infections.	*14-53% with daily 250 mg dosage for 3 months.	**6%-10% with everyday use for 48 weeks.	No current substantial evidence showing long-term success.
Side Effects	Tolnaftate may cause mild itching, dryness or peeling.	Diarrhea, upset stomach, gas, nausea, stomach pain, headache, dizziness, skin rash, itching, etc.	Skin inflammation, ingrown toenails, redness, itching, swelling, burning & blisters at the application site.	Does not address the underlying condition that leads to onychomycosis.

*Darkes MJ, Scott L.J., GOA KL. Terbinafine: A Review of Its Use in Onychomycosis in Adults. 2003; 4(1): 39-65. **Del Rosso JQ. The Role of Topical Antifungal Therapy for Onychomycosis and the Emergence of newer Agents. J Clin Aesthetic Dermatology. 2014; 7(7): 10-8.

Description	Qty per case	Item#
Soleus Complete Care System Includes: Softening Cream, Activator AF Cream, Nail Rejuvenation Elixir Smoothing Sponge	One Case=20 kits	GM-SOL-CASE
Soleus Skin Restorative System Includes: Softening Cream, Activator AF Cream, Smoothing Sponge	One case=20 kits	GM-SOL-NSS-CS2
Soleus Nail Restorative System Includes: Nail Rejuvenation Elixir, Smoothing Sponge	One case=54 kits	GM-SOL-NSS-CS3

Not available in all countries. Not available in Canada. Refer to package insert for instructions for use.

Re

Think
Develop
Invent

INSTRUMENTS

SCISSORS | FORCEPS | BONE MODELS

Procedural Instruments

Scissors & Forceps

Material: Premium German Stainless Steel | **Made in Germany**



Graham Decompression Scissor Set | Item #: GM-DS-SET-3

- + Includes: (1) left curved, (1) right curved, (1) straight.
- + Blunt extension gently lifts offending tissue to allow accurate transection without damage to surrounding tissue, nerves, veins, etc.
- + Blades are “super-cut” to ensure long-lasting use.

Ideal for:

Tarsal tunnel, intermetatarsal neurolysis, tendon sheath dissection

Implant Retrieval Forceps | Item #: GENFOR

- + Handle is ergonomically shaped with a roughened exterior surface to enhance the extraction process.
- + Jaw strength prevents damage of the instrument while the implant is being extracted.
- + Narrow, blunt tips are grooved to provide a contact point and firmly grasp the lateral end of a device, allowing it to be rotated and freeing up tissue adherence onto the stent.

Uses:

- Provides the ability to grasp and extricate most internally placed implants
- Minimizes tissue handling
- Assists in removal of implanted materials such as k-wires, screws or pins



Steven's Tenotomy Scissors | Item #: HYP-ST-DS

- + Blunt tipped and curved.
- + Assists in superficial dissection.
- + Allows for excellent leverage to transect sinus tarsi structures.

Details

- 11.5 cm/4½ inches long
- Multi-use



Patient Education

Bone Models

Made in the USA



Talus with HyProCure® Stent Model

Item #: Tal/Calc-W/Base

- + Ideal for patient education
- + Non-rigid sinus tarsi with attached HyProCure stent

Set Includes:

- Talus replica
- Attached HyProCure replica
- Branded stand

Large Talus & Calcaneus Foam Bone Model

Item #: Need item number

- + Ideal for patient education
- + Illustrates normal and abnormal range of motion
- + Roughly 12 in x 12 in when stacked together

Set Includes:

- Enlarged talus replica
- Enlarged calcaneus replica



Foot with HyProCure® Stent Model

Item #: Foot-W/Base

- + Ideal for patient education
- + Non-rigid sinus tarsi with attached HyProCure stent

Set Includes:

- Foot replica
- Attached HyProCure replica
- Branded stand

Re

Think
Develop
Invent

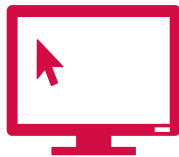
www.GraMedica.com

TRAIN



Attend a Training Session

We host global training events year round. To find out where we will be next, visit GraMedica.com/Events



Train Online

Begin your training from the convenience of anywhere! Visit HyProCureDoctors.com to begin your session today!



GRAMEDICA®

Innovative Foot & Ankle Solutions
Better Patient Outcomes



Contact Us

- ▶ **Corporate Office:** 16137 Leone Drive, Macomb, MI 48042 | **EU Office:** Wroclaw, Poland | **AS Office:** Shanghai, China
- ▶ **Place an Order:** 586-677-9600 | Orders@GraMedica.com ▶ **Find Your Local Sales Rep:** Info@GraMedica.com
- ▶ **Become a Trained HyProCure Surgeon:** HyProCureDoctors.com
- ▶ **General Product Information:** GraMedica.com

Together We Can Change Lives, One Step at a Time®

GPG Rev 612018