

PRODUCT CATALOG

2024 Version



bluesail+ surgical

R EDEFINING
Surgical Horizons

Beijing

Add: No.1106, Block B, Zhonghai International Center, Building 5, Anli Road, Chaoyang District
Tel: 010-50981788
Web: www.bluesailsurgical.com

Shanghai

Add: No.9, Lane 676 Wuxing Road, Tianan Vanke Yuhe Enterprise Mansion, Pudong District
Tel: 010-50981788
Web: www.bluesailsurgical.com

BLUESAIL SURGICAL CO.,LTD.

Contents

Table of Contents

+ 01

About Bluesail Surgical



- **Bluesail Surgical** 01
- **Production Base**
 - Ningbo Hitcm Medical Devices Co.,Ltd. 02
 - Changzhou Tongchuang Medical Instrument Technology Co., Ltd. 02

+ 02

Access Devices



- RenoVue® Novel Intra-Abdominal Lens Cleaning Device 03

+ 03

Energy Sealing&Dissecting



- TisFree® Ultrasonic Generator and Shears 05

+ 04

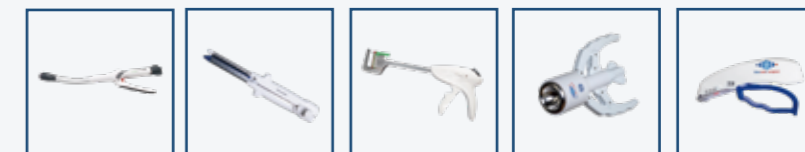
Endo Instruments



- **Powered Endo Stapler**
 - Astrolux® Powered Articulating Endoscopic Linear Cutter Reload 07
 - Siderlux® Powered Articulating Endoscopic Linear Cutter Reload 09
- **Endo Stapler**
 - Disposable Endo Cutter and Cartridges-TCNP 11
 - Disposable Endo Cutter and Cartridges-TCNX 13
 - Disposable Endo Cutter and Cartridges-TCNQ 15

+ 05

Open Instruments



- Disposable Circular Staplers 16
- Disposable Linear Cutter Staplers and Cartridges 17
- Disposable Linear Staplers and Cartridge 18
- Disposable Circumcision Staplers 19
- Disposable Skin Staplers 20

+ 06

Anorectal Instruments



- Disposable PPH Staplers 21
- Disposable Anorectal Ligation Devices and Cartridges 22

+ 07

Access Instruments



- Disposable Laparoscopic Trocar kits 23
- Disposable Incision Protectors 24

+ 08

Anorectal Instruments



- Disposable Biopsy Forceps 25
- Disposable Grasping Forceps 27
- Disposable Cytology Brushes 28
- Disposable Retrieval Bags 29

Bluesail Surgical



Stock Code **002382.SZ**

Bluesail Surgical is the surgical instrument business platform of Bluesail Medical, and has two wholly-owned licensed brand subsidiaries: Ningbo Hitcm Medical Devices Co., Ltd. and Changzhou Tongchuang Medical Instrument Technology Co., Ltd. The product portfolio of Bluesail Surgical includes mainstream surgical instruments and surgical innovative therapy instruments that replace surgery operations. In addition to the complete layout of all common surgical instruments in surgery, the company has a total of more than 10 blockbuster innovative products under development, which is committed to developing global surgical therapy to be more accurate, more minimally invasive/non-invasive, with fewer complications and better prognosis, to benefit patients with various benign and malignant diseases around the world.

World Vision, International Standards, and Local Advantages

A global multinational medical device platform company with China as the core

Production Base



Ningbo Production Base
Ningbo Hitcm Medical Devices Co., Ltd.



Ningbo Hitcm Medical Devices Co., Ltd. is a wholly-owned subsidiary of Bluesail Surgical. Haitai Kemai has 12,000 square meters of 100,000-level purification workshop and 10,000-level purification workshop, fully automated assembly production line, intelligent monitoring and feedback system, and has passed the ISO13485 quality management system certification. The product pipeline being registered by Haitai Kemai covers all mainstream surgical instruments, and many blockbuster products will be launched in this year and the coming year.



Changzhou Production Base
Changzhou Tongchuang Medical Instrument Co., Ltd.



Changzhou Tongchuang Medical Instrument Co., Ltd. is a wholly-owned subsidiary of Bluesail Surgical, focusing on the precision production, manufacture and sales of mid-to-high-end medical devices in the field of surgery. Tongchuang Medical has nearly 10,000 square meters of 100,000-level purification workshops and 10,000-level purification rooms, and has a number of high-precision machining equipment and automated assembly equipment. The company has now passed the ISO13485 quality system certification, and all products have obtained CE qualifications, making full efforts in penetrating overseas markets.

RenoVue® Novel Intra-Abdominal Lens Cleaning Device



A total solution for lens cleaning

Closed-loop Cleaning Systems
Enduring rigorous testing, a single device designed for dual purposes.

contactless switch
Dynamic Sensing, Smart Control

W-Base
Unrivaled Sealing, Anti-Fog Mastery

Pulsed Air-Ballistic Flow Cleaning Technology
Precision Gas-Liquid Mixing, High-Pressure Injection spray

Efficient cleaning, Best visual view

- Eliminating 'temperature difference fog' formation.
- Enhanced surgical efficiency with reduced lens cleaning.
- Optimize your surgical view with highly efficient lens decontamination.
- Seamless Plug-and-Play: No Constant Lens Focus or White Balance Adjustments Required.

Before

Intraoperative lens fogging or contamination during Intraoperative laparoscopic surgery

Lens Fogging Lens contamination

VS

After

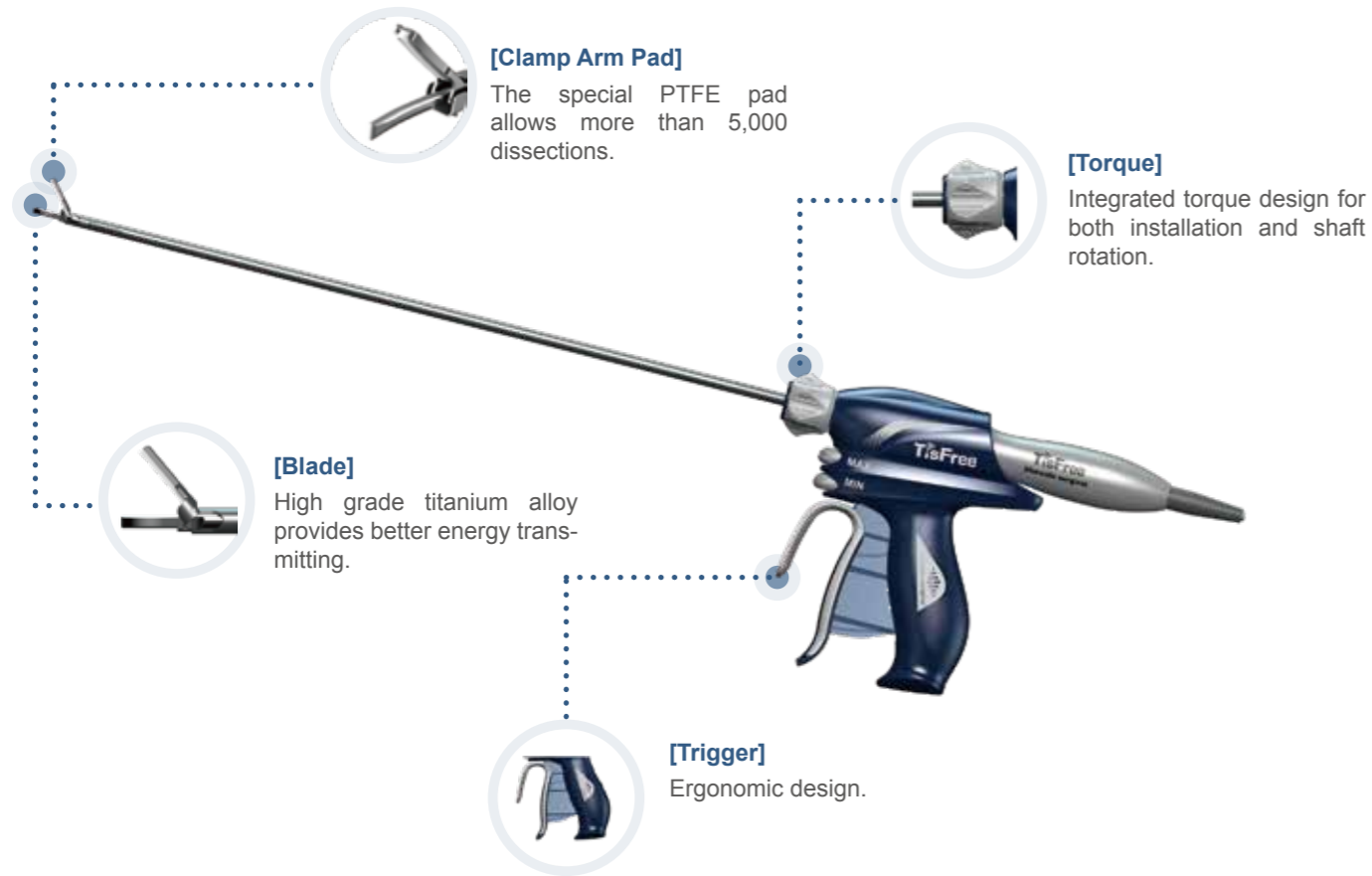
RenoVue eliminates contamination from the rear of the lens.

Attain a surgical field with unparalleled clarity and a crystal-clear view

Product Name	Trade name	Model	Specifications	Cannula inner diameter	Cannula length
Novel Intra-Abdominal Lens Cleaning Device	RenoVue®	HTAE	12B100	11.5mm	100mm
Novel Intra-Abdominal Lens Cleaning Device	RenoPort®	HTAE	12A100	11.5mm	100mm

- 0%** secondary contamination
High efficient Revolutionary design 0 secondary contamination
- 0** harm
W base sealing 0 liquid leakage 0 air leakage
- 0** leaks
W base sealing 0 liquid leakage 0 air leakage
- 2.4s**
Effective cleaning Minimum time 2.4S seconds
- 30** minutes
Maximum film protection time 30 minutes

• Data From: 1. Pre-market clinical trial data on Disposable Intra-abdominal Lens Cleaning Device
2. Verification scheme for fatigue resistance test of Disposable Intra-abdominal Lens Cleaning Device
3. Lens damage validation test for Disposable Intra-abdominal Lens Cleaning Device

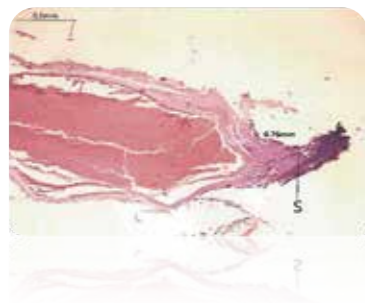


[Clamp Arm Pad]
The special PTFE pad allows more than 5,000 dissections.

[Torque]
Integrated torque design for both installation and shaft rotation.

[Blade]
High grade titanium alloy provides better energy transmitting.

[Trigger]
Ergonomic design.



Newly upgraded capability to handle 5mm vessels, More Secure and versatile.

Real-time jaw impedance monitoring and adaptive energy delivery, precise algorithm control, provide excellent hemostasis and vessels sealing capability, can effectively seal up to 5mm blood vessels.

The ability to seal vessels up to 5 mm and allows the operator to handle the vascular bundles and access deep cavity with greater ease and convenience, reducing the risk of bleeding and the use of other ancillary instruments.



Intelligent Sensing Technology

Enables continuous, smooth and fast operation in tissue dissection and transection capabilities

Optimized Structural Design

Optimize transducer structural design, enables excellent dissecting and hemostasis performance and improve durability.

Improved Jaw Design

The integrally molded curved blade and special PTFE pad improve wear and tear resistance.

CCO Technology

Accurate constant current output technology can effectively ensure the consistency of the output amplitude of the blade, so as to provide stable cutting and sealing effect.

TII Technology

Automatically identify tissue impedance, dynamically regulate output power, and improve dissecting speed and smoothness.

RFSF Technology

The resonant frequency tracking algorithm ensures the best piezoelectric effect of the piezoelectric ceramic, reducing energy loss and enable greater precision in operation.

High Efficiency Piezoelectric Coupling Technology

High Efficiency Piezoelectric Coupling Technology.

Product Name	Product Code	Shaft Length	Product Diagram
	FC360A	360mm	
Ultrasonic Scalpel System - Scalpel	FC230A	230mm	
	FC140A	140mm	

Product Diagram	Product Name	Product Code
	Ultrasonic Generator	FH100A
	Transducer Handpiece	FT100A
	Cart	FU100A

Astrolux® Powered Articulating Endoscopic Linear Cutter Reload



ADVANCED DESIGNS



Spy-beak Accessory

Two spy-beak accessories are available depending on clinical needs for easier and safer maneuver in narrow spaces.



Droplet Groove Design

Wider anvil pockets to improve capture area and staple guiding for better staples formation.



U-lock Technology

Improve stability on tissue gripping, reduce tissue movement to produce better staples formation.

Product Code	Shaft Length (mm)	Adaptive Reload (mm)	Spy-beak
HTNS45 / HTNS45Y	192	45	N / Y
HTNS60 / HTNS60Y	192	60	N / Y
HTNM45 / HTNM45Y	252	45	N / Y
HTNM60 / HTNM60Y	252	60	N / Y
HTNL45 / HTNL45Y	352	45	N / Y
HTNL60 / HTNL60Y	352	60	N / Y

Product Code	Stapling Length (mm)	Open Staple Height (mm)	Closed Staple Height (mm)	Color
HTFM45 / HTFM60	50/62	2.0	0.7	Grey ●
HTFW45 / HTFW60	50/62	2.5	1.0	White ●
HTFB45 / HTFB60	50/62	3.5	1.5	Blue ●
HTFY45 / HTFY60	50/62	3.8	1.8	Gold ●
HTFG45 / HTFG60	50/62	4.1	2.0	Green ●
HTFH45 / HTFH60	50/62	4.4	2.2	Black ●
HTGM45 / HTGM60	50/62	2.0	0.7	Grey ●
HTGW45 / HTGW60	50/62	2.5	1.0	White ●
HTGB45 / HTGB60	50/62	3.5	1.5	Blue ●
HTGY45 / HTGY60	50/62	3.8	1.8	Gold ●
HTGG45 / HTGG60	50/62	4.1	2.0	Green ●
HTGH45 / HTGH60	50/62	4.4	2.2	Black ●

INTELLIGENCE FEEDBACK



Intelligence Tissue Compression Indicator

Provide intelligent visual & audible feedback for better tissue compression, enhanced safety during transection.

Skipping the tissue compression waiting time can be done easily for thin tissue.



Intelligence Battery-level Indicator

Designed to give surgeon in control and a peace of mind in long-hours operation.



INTELLIGENCE OPERATION



One-handed Powered Opening & Closing

- Easier & effortless powered closure of jaw.
- Audible feedback on complete closure.
- Manipulate tissue safely & easily with powered opening of jaw.
- Automatic jaw opening when transection completed.



One-handed Knife Reversal

Reverse knife easily at any time when tissue transection is not possible.

One-handed Jaw Articulation

One-handed operated natural articulation improve comfort and ease of use for surgeons.

Siderlux® Powered Articulating Endoscopic Linear Cutter Reload



EXQUISITE DESIGN AND ORIGINALITY



U-Lock technology

Ensure more stable tissue gripping, effectively reduce tissue overflow, and promote better staple formation.



Spy-Beak Accessories

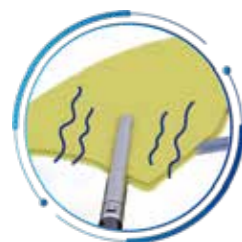
Two spy-beak accessories are available depending on clinical needs for easier and safer maneuver in narrow spaces.



Droplet Groove Design

Wider anvil pockets to improve capture area and staple guiding for better staple formation.

ENHANCED STABILITY IN FIRING FOR THE ENTIRE CUTTING & STAPLING PROCESS



Effortless powered firing, greatly minimizes movement of the distal tip, avoiding tissue pulling and protecting the anastomosis.

SURGEON IN CONTROLLED FIRING



- One-handed operated natural articulation improves comfort and ease of use for surgeons.
- Ease of long hours surgery, the left, and right hands complement each other, and the operation is more user-friendly.

MAKING THE SURGERY - SIMPLE, EASY & PEACE OF MIND



A truly one-handed operated device that lets surgeons focus on patient/ procedure.



Manual jaw closure provides visual & audible feedback for greater peace of mind.



Powered firing, controllable firing process-cut/stop, automatic return after complete transection.

Product Code	Stapling Length (mm)	Open Staple Height (mm)	Closed Staple Height (mm)	Color
HTFM45 / HTFM60	50/62	2.0	0.7	Grey ●
HTFW45 / HTFW60	50/62	2.5	1.0	White ●
HTFB45 / HTFB60	50/62	3.5	1.5	Blue ●
HTFY45 / HTFY60	50/62	3.8	1.8	Gold ●
HTFG45 / HTFG60	50/62	4.1	2.0	Green ●
HTFH45 / HTFH60	50/62	4.4	2.2	Black ●
HTGM45 / HTGM60	50/62	2.0	0.7	Grey ●
HTGW45 / HTGW60	50/62	2.5	1.0	White ●
HTGB45 / HTGB60	50/62	3.5	1.5	Blue ●
HTGY45 / HTGY60	50/62	3.8	1.8	Gold ●
HTGG45 / HTGG60	50/62	4.1	2.0	Green ●
HTGH45 / HTGH60	50/62	4.4	2.2	Black ●

Product Code	Shaft Length (mm)	Adaptive Reload (mm)	Spy-beak
HTMS45 / HTMS45Y	192	45	N / Y
HTMS60 / HTMS60Y	192	60	N / Y
HTMM45 / HTMM45Y	252	45	N / Y
HTMM60 / HTMM60Y	252	60	N / Y
HTML45 / HTML45Y	352	45	N / Y
HTML60 / HTML60Y	352	60	N / Y

Disposable Endo Cutter and Cartridges



Rotating Head Assembly

The rotating head can adjust three angles: 15°, 30°, 45°.

Ergonomics Design

Antiskid coating

Optimized Lever Mechanics Technology

With four or five firings, the optimized lever mechanical design is adopted to make the operator fire more smoothly and easily.

Stapling Protection

Protection design of 1.5 staples at the front end of cutting line.



Integrated Machining Anvil

To ensure firm tissue stapling. The thin anvil can also be a non-invasive grasping forcep.



U - Lock Technology

To ensure that staples can enter into the groove safely and accurately during clamping and firing.



Droplet Groove Design

Oriented and contact area increased by 30% to ensure better staple formation.



Curved Tip Anvil

Provides visibility and maneuverability around target tissues and vessels.

Product Code	Description	Shaft Length	Packing
TCNP-S	Endocutter Universal GEN II	60mm	1pc/box
TCNP-M	Endocutter Universal GEN II	160mm	1pc/box
TCNP-L	Endocutter Universal GEN II	260mm	1pc/box

Product Picture	Product Code	Description	Type	Stapling Length	Open Staple Height	Closed Staple Height	Color	Packing
	TCZNX-30B			30mm				
	TCZNX-45B	GEN II, 2.5mm Staple height	Articulation	45mm	2.5mm	1.0mm	White	6pcs/box
	TCZNX-60B			60mm				
	TCZNX-30C			30mm				
	TCZNX-45C	GEN II, 3.5mm staple height	Articulation	45mm	3.5mm	1.6mm	Blue	6pcs/box
	TCZNX-60C			60mm				
	TCZNX-45E	GEN II, 4.1mm staple height	Articulation	45mm	4.1mm	1.8mm	Gold	6pcs/box
	TCZNX-60E			60mm				
	TCZNX-45F	GEN II, 4.8mm staple height	Articulation	45mm	4.8mm	2.15mm	Green	6pcs/box
	TCZNX-60F			60mm				
	TCZNX-30H			30mm				
	TCZNX-45H	Variable-height staple	Articulation	45mm	2.0/2.5/3.0mm	0.7mm, 0.9mm, 1.1mm	Tan	6pcs/box
	TCZNX-60H			60mm				
	TCZNX-45I	Variable-height staple	Articulation	45mm	3.0/3.5/4.0mm	1.2mm, 1.4mm, 1.6mm	Purple	6pcs/box
	TCZNX-60I			60mm				
	TCZNX-45J	Variable-height staple	Articulation	45mm		1.6mm, 1.85mm, 2.1mm	Black	6pcs/box
	TCZNX-60J			60mm				
	TCZNXK-30B			30mm				
	TCZNXK-45B	GEN II, 2.5mm Staple height cruded tip	Articulation	45mm	2.5mm	1.0mm	White	6pcs/box
	TCZNXK-60B			60mm				
	TCZNXK-30H			30mm				
	TCZNXK-45H	Variable-height staple, cruded tip	Articulation	45mm	2.0/2.5/3.0mm	0.7mm, 0.9mm, 1.1mm	Tan	6pcs/box
	TCZNXK-60H			60mm				
	TCZNXK-45I	Variable-height staple, cruded tip	Articulation	45mm	3.0/3.5/4.0mm	1.2mm, 1.4mm, 1.6mm	Purple	6pcs/box
	TCZNXK-60I			60mm				
	TCZNXK-45J	Variable-height staple, cruded tip	Articulation	45mm	4.0/4.5/5.0mm	1.6mm, 1.85mm, 2.1mm	Black	6pcs/box
	TCZNXK-60J			60mm				



One-hand Operation

Firing and backoff can be done easily

Self-adaptive Joint

The self-adaptive joint can provide greater rotation angle.

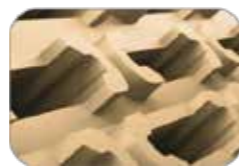
High Strength Anvil

High strength anvil provides stronger tissue grasp force.



Droplet Groove Design

Oriented and contact area increased by 30% to ensure better staple formation.



U - Lock Technology

To ensure that staples can enter into the groove safely and accurately during clamping and firing.



3-Point Gap Control System

Ensure the same force for tissue from proximal to distal to get perfect B-shaped formation.



High Strength Staple

Use high strength titanium staple to get better formation.

Product Picture	Product Code	Description	Stapling Length	Open Staple Height	Closed Staple Height	Color	Packing
	TCZN-45B	Gecko-Claw Technology	45mm	2.5mm	1.0mm	White	12pcs/box
	TCZN-45C	Gecko-Claw Technology	45mm	3.5mm	1.5mm	Blue	12pcs/box
	TCZN-45D	Gecko-Claw Technology	45mm	3.8mm	1.8mm	Gold	12pcs/box
	TCZN-45E	Gecko-Claw Technology	45mm	4.1mm	2.0mm	Green	12pcs/box
	TCZN-45F	Gecko-Claw Technology	45mm	4.4mm	2.2mm	Black	12pcs/box
	TCZN-60B	Gecko-Claw Technology	60mm	2.5mm	1.0mm	White	12pcs/box
	TCZN-60C	Gecko-Claw Technology	60mm	3.5mm	1.5mm	Blue	12pcs/box
	TCZN-60D	Gecko-Claw Technology	60mm	3.8mm	1.8mm	Gold	12pcs/box
	TCZN-60E	Gecko-Claw Technology	60mm	4.1mm	2.0mm	Green	12pcs/box
	TCZN-60F	Gecko-Claw Technology	60mm	4.4mm	2.2mm	Black	12pcs/box

Product Code	Description	Shaft Length	Packing
TCNX45/60-S	Endocutter Flex	280mm	1pc/box
TCNX45/60-M	Endocutter Flex	340mm	1pc/box
TCNX45/60-L	Endocutter Flex	440mm	1pc/box

Disposable Endo Cutter and Cartridges



U - Lock Technology

To ensure that staples can enter into the groove safely and accurately during clamping and firing.



Wide Jaw Opening

Allows easy placement on tissues. Two triple, staggered rows of titanium staples, providing a secure staple line and a superior haemostasis.



Unique Welding Method

Provides triple reinforcement support and excellent performance in safety.

Product Code	Description	Shaft Length	Packing
TCNQ-S	First Generation	60mm	1pc/box
TCNQ-M	First Generation	160mm	1pc/box
TCNQ-L	First Generation	260mm	1pc/box

Product Picture	Product Code	Description	Type	Stapling Length	Open Staple Height	Closed Staple Height	Color	Packing
	TCZNZO-30B	GEN I, Straight	Straight	30mm	2.5mm	1.0mm	White	1pc/box
	TCZNZO-45B			45mm				
	TCZNZO-60B			60mm				
	TCZNZO-45C	GEN I, Straight	Straight	45mm	3.5mm	1.6mm	Blue	1pc/box
	TCZNZO-60C			60mm				
	TCZNZO-45E			45mm				
	TCZNZO-60E	60mm	GEN I, Straight	Straight	4.1mm	1.8mm	Gold	1pc/box
	TCZNZO-45F	45mm						
	TCZNZO-60F	60mm						
	TCZNXO-30B	GEN I, Rotating	Rotating	30mm	2.5mm	1.0mm	White	1pc/box
	TCZNXO-45B			45mm				
	TCZNXO-60B			60mm				
	TCZNXO-30C	GEN I, Rotating	Rotating	30mm	3.5mm	1.6mm	Blue	1pc/box
	TCZNXO-45C			45mm				
	TCZNXO-60C			60mm				
	TCZNXO-45E	GEN I, Rotating	Rotating	45mm	4.1mm	1.8mm	Gold	1pc/box
	TCZNXO-60E			60mm				
	TCZNXO-45F			45mm				
	TCZNXO-60F	60mm	GEN I, Rotating	Rotating	4.8mm	2.0mm	Green	1pc/box

Disposable Circular Staplers



Thinner Anvil

Provides strong support to ensure better staple formation. Extra-thin anvil is designed to be placed into purse-string easily.



Conjoined Puncture

More convenient to Sphincter-preserving



Adjustable Staple Formation

Available for different thickness of gastrointestinal tissue.



Stapling Feedback Mechanism

Tactile and audible feedback during the firing sequence.

Product Code	Description	Diameter	Staples	Staple Height	Tissue Thickness	Packing
TCYW-21	Circular stapler 21mm(D)	21mm	18pcs	4.5mm	1.0-2.5mm	1pc/box
TCYW-24	Circular stapler 24mm(D)	24mm	18pcs	4.5mm	1.0-2.5mm	1pc/box
TCYW-26	Circular stapler 26mm(D)	26mm	20pcs	4.5mm	1.0-2.5mm	1pc/box
TCYW-29	Circular stapler 29mm(D)	29mm	24pcs	4.8mm	1.0-2.5mm	1pc/box
TCYW-32	Circular stapler 32mm(D)	32mm	30pcs	5.0mm	1.0-2.5mm	1pc/box
TCYW-34	Circular stapler 34mm(D)	34mm	32pcs	5.0mm	1.0-2.5mm	1pc/box

Disposable Linear Cutter Staplers and Cartridges



Droplet Groove Design

Increase oriented contact area to ensure better B-shape staple formation.



CAM Design

Provide consistent formation from proximal to distal to reduce risk of staple line leakage



Safety Lock-out Design

Prevent a used reload from being refired.

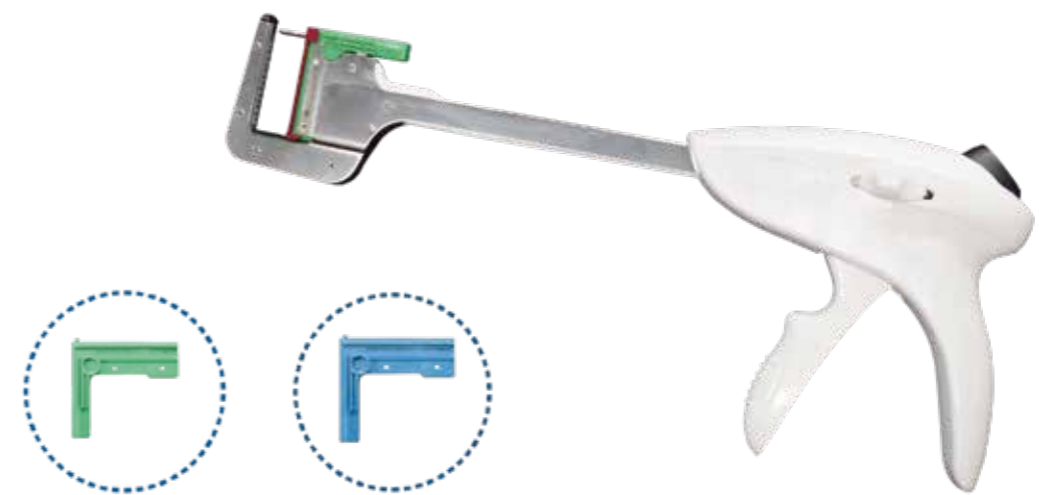


High Strength Staple

Use High strength titanium staple to get better formation

Product Picture	Product Code	Description	Stapling Length	Staples	Tissue Thickness	Staple Height	Color	Packing
	TCYQ-55*3.85	Linear cutter 55mm(L), 3.85mm(H)	55mm	55	1.5	3.85mm	Blue	1pc/box
	TCYQ-55*4.5	Linear cutter 55mm(L), 4.5mm(H)	55mm	55	2.0	4.50mm	Green	1pc/box
	TCYQ-75*3.85	Linear cutter 75mm(L), 3.85mm(H)	75mm	75	1.5	3.85mm	Blue	1pc/box
	TCYQ-75*4.5	Linear cutter 75mm(L), 4.5mm(H)	75mm	75	2.0	4.50mm	Green	1pc/box
	TCYQ-100*3.85	Linear cutter 100mm(L), 3.85mm(H)	100mm	100	1.5	3.85mm	Blue	1pc/box
	TCYQ-100*4.5	Linear cutter 100mm(L), 4.5mm(H)	100mm	100	2.0	4.50mm	Green	1pc/box

Disposable Linear Staplers and Cartridge



- Lengthened shaft makes operation more flexible.
- Parallel closure design increases integrity and stability of closure.
- Manual and automatic positioning needle switch automatically.
- Embedded soft rubber anti-skid design makes operation more convenient.
- One-handed operation.

Product Picture	Product Code	Description	Stapling Length	Staples	Open Staple Height	Closed Staple Height	Color	Packing
	TCYZ-30*3.8	30mm,3.8mm	30mm	11pcs	3.8mm	2.0mm	Green	1pc/box
	TCYZ-45*3.8	45mm,3.8mm	45mm	15pcs	3.8mm	2.0mm	Green	1pc/box
	TCYZ-60*3.8	60mm,3.8mm	60mm	21pcs	3.8mm	2.0mm	Green	1pc/box
	TCYZ-90*3.8	90mm,3.8mm	90mm	33pcs	3.8mm	2.0mm	Green	1pc/box
	TCYZ-30*4.5	30mm,4.5mm	30mm	11pcs	4.5mm	1.5mm	Blue	1pc/box
	TCYZ-45*4.5	45mm,4.5mm	45mm	15pcs	4.5mm	1.5mm	Blue	1pc/box
	TCYZ-60*4.5	60mm,4.5mm	60mm	21pcs	4.5mm	1.5mm	Blue	1pc/box
	TCYZ-90*4.5	90mm,4.5mm	90mm	33pcs	4.5mm	1.5mm	Blue	1pc/box
		TCYZ-30*3.8	30mm,3.8mm	30mm	11pcs	3.8mm	2.0mm	Green
TCYZ-45*3.8		45mm,3.8mm	45mm	15pcs	3.8mm	2.0mm	Green	6pcs/box
TCYZ-60*3.8		60mm,3.8mm	60mm	21pcs	3.8mm	2.0mm	Green	6pcs/box
TCYZ-90*3.8		90mm,3.8mm	90mm	33pcs	3.8mm	2.0mm	Green	6pcs/box
TCYZ-30*4.5		30mm,4.5mm	30mm	11pcs	4.5mm	1.5mm	Blue	6pcs/box
TCYZ-45*4.5		45mm,4.5mm	45mm	15pcs	4.5mm	1.5mm	Blue	6pcs/box
TCYZ-60*4.5		60mm,4.5mm	60mm	21pcs	4.5mm	1.5mm	Blue	6pcs/box
TCYZ-90*4.5		90mm,4.5mm	90mm	33pcs	4.5mm	1.5mm	Blue	6pcs/box

Disposable Circumcision Staplers



Fast Positioning

Integrated with long rod, glans cap is convenient for correct positioning in order to avoid firing deviation.



Glans Cap

Provide stainless "steel" glans cap for safer operation.



Silicone Ring Design

To ensure the staples removal effect, and also to ensure a better hemostatic effect.



Optimized Staples

Narrow staple leg and oblong shape are designed for better hemostatic and easy to take off.

Product Code	Description	Diameter	Staple Height	Number of Staplers	Packing
TCBP-12×3.0-A	12mm DIA,3.0mm	12mm	3.0mm	9	1pc/box
TCBP-15×3.0-A	15mm DIA,3.0mm	15mm	3.0mm	12	1pc/box
TCBP-18×3.0-A	19mm DIA,3.0mm	19mm	3.0mm	12	1pc/box
TCBP-21×3.0-A	21mm DIA,3.0mm	21mm	3.0mm	15	1pc/box
TCBP-26×3.0-A	25mm DIA,3.0mm	25mm	3.0mm	18	1pc/box
TCBP-30×3.0-A	29mm DIA,3.0mm	29mm	3.0mm	20	1pc/box
TCBP-32×3.0-A	32mm DIA,3.0mm	32mm	3.0mm	22	1pc/box
TCBP-36×3.0-A	34mm DIA,3.0mm	34mm	3.0mm	22	1pc/box

Disposable Skin Staplers



Open Nose Piece and Low Profile

Open nose piece and low profile for clear view of staple placement. Arrow guide for accurate and consistent placement.



Visible Staple Counter

Provide visible staple counter for constant indication of staple supply and for efficient use.



Ergonomics Design

Ergonomics design of firing trigger for more stable firing.



Staples Remover

Special staples remover can reduce the pressure on skin and relieve pain.



- Streamlined handle design for comfortable and convenient operation.
- Small skin wound to avoid pain of traditional suture clearing.
- Smooth staple formation, accurate and safe.
- Save suture time and as far as possible to reduce pain from patient.
- Sterile medical products, single use, wide application scope.

Product Code	Description	Closed Staple Height	Number of Staplers	Material of Staplers	Packing
TCYP(R)-35(A)	35pcs staples, 6.5(W) x 4.0(H)mm	6.5(W) x 4.0(H)mm	35pcs	Medical stainless steel	1pc/box
TCYP(W)-35(A)	35pcs staples, 7.0(W) x 4.5(H) mm	7.0(W) x 4.5(H) mm	35pcs	Medical stainless steel	1pc/box
TCYPF-CB	Removal				

Disposable PPH Staplers



Increased Cartridge volume

Increased effective volume to accommodate more tissue.



Indication Window

Large indication window for precise control of firing.



Long Anvil Shaft

Enough length for easier purse-string.



Firing Feedback

Provide sound and tactile feedback after firing.

Anal Guide



Suturing-aid



Anal dilator



Single Opening



Double Openings



Treble Openings



Product Code	Description	Head Diameter	Number of Staples	Open Staple Height	Tissue Thickness	Packing
TCYG-32	Diameter 32mm	32mm	30pcs	4.0mm/3.8mm	0.75mm-1.5mm	1pc/box
TCYG-34	Diameter 34mm	34mm	32pcs	4.0mm/3.8mm	0.75mm-1.5mm	1pc/box
TCYG-36	Diameter 36mm	36mm	34pcs	4.0mm/3.8mm	0.75mm-1.5mm	1pc/box

Disposable Anorectal Ligation Devices and Cartridges



Attached pushing ring

Avoid dropping into rectum



Continuous Firing

Provide four continuous firings to save operation time.



Elastic Band

Stronger elastic band for better ligation.



Manual aspiration

Another option for operation.

Product Code	Description	Suction	Ligation	Packing
TCTZA-3	External vacuum extractor/self-suction, pre-loaded elastic threads, additional elastic threads or rubber bands	manual / vacuum extractor	rubber ring / elastic band	1pc/box
TCTZA-4		manual / vacuum extractor	rubber ring / elastic band	1pc/box
TCTZA-5		manual / vacuum extractor	rubber ring / elastic band	1pc/box
TCTZA-6		manual / vacuum extractor	rubber ring / elastic band	1pc/box
TCTZA-7		manual / vacuum extractor	rubber ring / elastic band	1pc/box
TCTZA-8		manual / vacuum extractor	rubber ring / elastic band	1pc/box

Disposable Laparoscopic Trocar kits



Detachable Design

Provide detachable sealing cap for convenient tissue collection and quick discharge.



Recessed Stopcock Valve

Anti-tearing material can effectively reduce the friction of the instrument and mitigate inadvertent opening/closing of valve during surgery.



Optical Design

Obturator is designed with transparent tip to provide visual insertion.

Product Code	Description	Cannula Diameter	Shaft Length	Packing
TCCA3S	TCCA3S bladeless 3mm*64mm	3.8mm	64mm	1pc/box
TCCA5M	TCCA5M bladeless 5mm*100mm	5.8mm	100mm	1pc/box
TCCA10M	TCCA10M Optical bladeless 10mm*100mm	10.8mm	108mm	1pc/box
TCCA12M	TCCA12M Optical bladeless 12mm*100mm	12.8mm	108mm	1pc/box
TCCA15M	TCCA15M Optical bladeless 15mm*100mm	15.8mm	108mm	1pc/box
TCCB5M	TCCB5M Non Optical, bladed 5mm*100mm	5.8mm	100mm	1pc/box
TCCB10M	TCCB10M Non Optical, bladed 10mm*100	10.8mm	108mm	1pc/box
TCCB12M	TCCB12M Non Optical, bladed 12mm*100mm	12.8mm	108mm	1pc/box
TCCC6X	TCCC6X Thoracic Trocar, 6mm	6.3mm	65mm	1pc/box
TCCC10X	TCCC10X Thoracic Trocar, 10mm	10.8mm	65mm	1pc/box
TCCC12X	TCCC12X Thoracic Trocar, 12mm	13.3mm	65mm	1pc/box
TCCC15X	TCCC15X Thoracic Trocar, 15mm	15.8mm	65mm	1pc/box
A1 Kit	TCCA5M 2PCS/TCCA10M: 2PCS/Veress Neddel: 1PC/Retrieval Bag: 1PC			1pc/box
A2 Kit	TCCA5M 2PCS/TCCA10M: 1PCS/Veress Neddel: 1PC/Retrieval Bag: 1PC			1pc/box
A5 Kit	TCCA5M 2PCS/TCCA12M: 2PCS/Veress Neddel: 1PC/Retrieval Bag: 1PC			1pc/box

Disposable Incision Protectors



Easy to fold

The upper ring folds in, on and out, and attaches the polyurethane film to the wound lips. Soft and hard structure is produced.



Excellent Protection

Polyurethane film wraps the wound lips well and makes buffer for bleeding. Protect the wound lips against contamination. Maintain moisture. Provide excellent appearance in incision area.



Easy to Pass Through

The bottom ring is made of polyurethane and has a flexible structure. Easy to pass through the small size incision.



More Options for Surgery

Provide a variety of specifications of fixed height and unfixed height for clinical operation.

Product Code	Outer Diameter (mm)	Inner Diameter (mm)	Channel Diameter (mm)	Channel Length (mm)	Type	Packing
TCQGA50/60-50/150	50mm	60mm	50mm	150mm	flexible	1pc/box
TCQGA60/70-60/150	60mm	70mm	60mm	150mm	flexible	1pc/box
TCQGA80/90-80/150	80mm	90mm	80mm	150mm	flexible	1pc/box
TCQGA120/130-120/150	120mm	130mm	120mm	150mm	flexible	1pc/box
TCQGA150/160-150/250	150mm	160mm	150mm	250mm	flexible	1pc/box
TCQGA180/190-180/250	180mm	190mm	180mm	250mm	flexible	1pc/box
TCQGA220/230-220/250	220mm	230mm	220mm	250mm	flexible	1pc/box
TCQGA270/280-270/250	270mm	280mm	270mm	250mm	flexible	1pc/box
TCQGA320/330-320/350	320mm	330mm	330mm	250mm	flexible	1pc/box
TCQGB40/30-15/20	40mm	30mm	15mm	20mm	fixed length	1pc/box
TCQGB50/40-25/25	50mm	40mm	25mm	25mm	fixed length	1pc/box

Disposable Biopsy Forceps



Improved Micro-mesh Tooth Design
Engineered for a clean, precise bite.



Large Capacity
Large tissue specimens for excellent sample handling, preparation and accurate histological diagnosis.



Excellent Flexibility
Pass through 210° curved channel.



Special Wire Rod Structure
Steel jaw, special wire rod structure for excellent mechanic function.

Product Code	Outer Diameter (mm)	Length (mm)	Endoscope Channel (mm)	Characteristic
TCYH1-T1A-O-1.8-1050	1.8	1050	≥2.0	without spike, uncoated, standard jaw
TCYH1-T1A-O-1.8-1600	1.8	1600	≥2.0	without spike, uncoated, standard jaw
TCYH1-T1A-O-2.3-1600	2.3	1600	≥2.8	without spike, uncoated, standard jaw
TCYH1-T1A-O-2.3-1800	2.3	1800	≥2.8	without spike, uncoated, standard jaw
TCYH1-T1A-O-2.3-2000	2.3	2000	≥2.8	without spike, uncoated, standard jaw
TCYH1-T1A-O-2.3-2300	2.3	2300	≥2.8	without spike, uncoated, standard jaw
TCYH1-T1A-P-1.8-1050	1.8	1050	≥2.0	without spike, coated, standard jaw
TCYH1-T1A-P-1.8-1600	1.8	1600	≥2.0	without spike, coated, standard jaw
TCYH1-T1A-P-2.3-1600	2.3	1600	≥2.8	without spike, coated, standard jaw
TCYH1-T1A-P-2.3-1800	2.3	1800	≥2.8	without spike, coated, standard jaw
TCYH1-T1A-P-2.3-2000	2.3	2000	≥2.8	without spike, coated, standard jaw
TCYH1-T1A-P-2.3-2300	2.3	2300	≥2.8	without spike, coated, standard jaw
TCYH1-T1B-O-1.8-1050	1.8	1050	≥2.0	with spike, uncoated, standard jaw
TCYH1-T1B-O-1.8-1600	1.8	1600	≥2.0	with spike, uncoated, standard jaw
TCYH1-T1B-O-2.3-1600	2.3	1600	≥2.8	with spike, uncoated, standard jaw
TCYH1-T1B-O-2.3-1800	2.3	1800	≥2.8	with spike, uncoated, standard jaw
TCYH1-T1B-O-2.3-2000	2.3	2000	≥2.8	with spike, uncoated, standard jaw

Product Code	Outer Diameter (mm)	Length (mm)	Endoscope Channel (mm)	Characteristic
TCYH1-T1B-O-2.3-2300	2.3	2300	≥2.8	with spike, uncoated, standard jaw
TCYH1-T1B-P-1.8-1050	1.8	1050	≥2.0	with spike, coated, standard jaw
TCYH1-T1B-P-1.8-1600	1.8	1600	≥2.0	with spike, coated, standard jaw
TCYH1-T1B-P-2.3-1600	2.3	1600	≥2.8	with spike, coated, standard jaw
TCYH1-T1B-P-2.3-1800	2.3	1800	≥2.8	with spike, coated, standard jaw
TCYH1-T1B-P-2.3-2000	2.3	2000	≥2.8	with spike, coated, standard jaw
TCYH1-T1B-P-2.3-2300	2.3	2300	≥2.8	with spike, coated, standard jaw
TCYH1-T2A-O-1.8-1050	1.8	1050	≥2.0	without spike, uncoated, alligator jaw
TCYH1-T2A-O-1.8-1600	1.8	1600	≥2.0	without spike, uncoated, alligator jaw
TCYH1-T2A-O-2.3-1600	2.3	1600	≥2.8	without spike, uncoated, alligator jaw
TCYH1-T2A-O-2.3-1800	2.3	1800	≥2.8	without spike, uncoated, alligator jaw
TCYH1-T2A-O-2.3-2000	2.3	2000	≥2.8	without spike, uncoated, alligator jaw
TCYH1-T2A-O-2.3-2300	2.3	2300	≥2.8	without spike, uncoated, alligator jaw
TCYH1-T2A-P-1.8-1050	1.8	1050	≥2.0	without spike, coated, alligator jaw
TCYH1-T2A-P-1.8-1600	1.8	1600	≥2.0	without spike, coated, alligator jaw
TCYH1-T2A-P-2.3-1600	2.3	1600	≥2.8	without spike, coated, alligator jaw
TCYH1-T2A-P-2.3-1800	2.3	1800	≥2.8	without spike, coated, alligator jaw
TCYH1-T2A-P-2.3-2000	2.3	2000	≥2.8	without spike, coated, alligator jaw
TCYH1-T2A-P-2.3-2300	2.3	2300	≥2.8	without spike, coated, alligator jaw
TCYH1-T2B-O-1.8-1050	1.8	1050	≥2.0	with spike, uncoated, alligator jaw
TCYH1-T2B-O-1.8-1600	1.8	1600	≥2.0	with spike, uncoated, alligator jaw
TCYH1-T2B-O-2.3-1600	2.3	1600	≥2.8	with spike, uncoated, alligator jaw
TCYH1-T2B-O-2.3-1800	2.3	1800	≥2.8	with spike, uncoated, alligator jaw
TCYH1-T2B-O-2.3-2000	2.3	2000	≥2.8	with spike, uncoated, alligator jaw
TCYH1-T2B-O-2.3-2300	2.3	2300	≥2.8	with spike, uncoated, alligator jaw
TCYH1-T2B-P-1.8-1050	1.8	1050	≥2.0	with spike, coated, alligator jaw
TCYH1-T2B-P-1.8-1600	1.8	1600	≥2.0	with spike, coated, alligator jaw
TCYH1-T2B-P-2.3-1600	2.3	1600	≥2.8	with spike, coated, alligator jaw
TCYH1-T2B-P-2.3-1800	2.3	1800	≥2.8	with spike, coated, alligator jaw
TCYH1-T2B-P-2.3-2000	2.3	2000	≥2.8	with spike, coated, alligator jaw
TCYH1-T2B-P-2.3-2300	2.3	2300	≥2.8	with spike, coated, alligator jaw

Disposable Grasping Forceps



Synchronous Rotation

The handle and the head rotate synchronously to facilitate the operation of the doctor.



Flat Foreign Body Removal

Intend to remove flat foreign objects such as coins.



Resected Polyps Removal

Intend to remove resected polyps, diseased tissue etc.

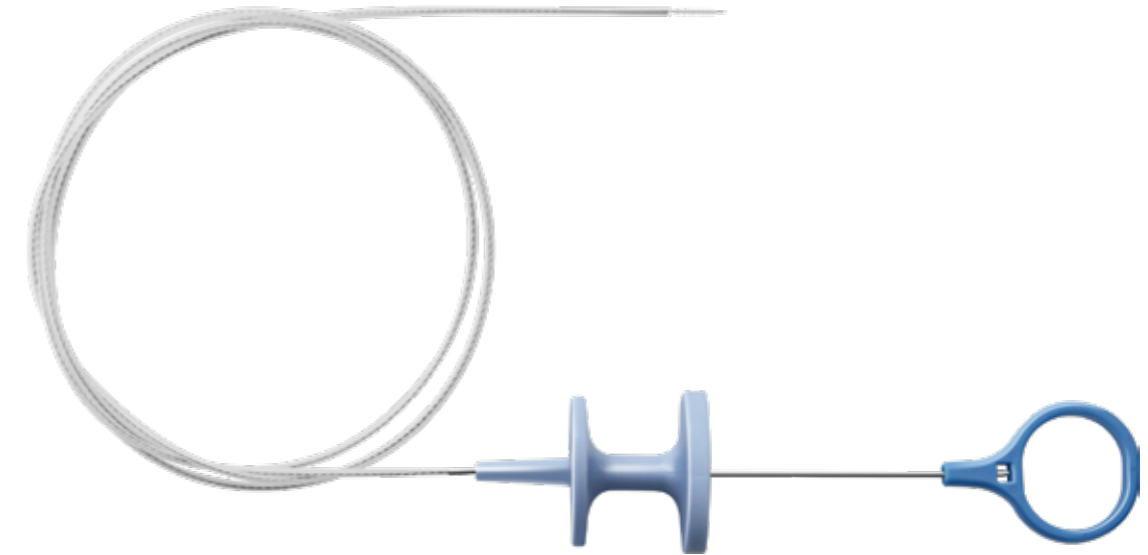


Stent Retrieval

Intend to remove deformed foreign objects such as irregular body and sent retrieval.

Product Code	Outer Diameter (mm)	Length (mm)	Endoscope Channel (mm)	Characteristic
TCYY-A1-O-1600	2.3	1600	≥2.8	A1:Alligator jaw
TCYY-A1-O-1800	2.3	1800	≥2.8	A1:Alligator jaw
TCYY-A1-O-2300	2.3	2300	≥2.8	A1:Alligator jaw
TCYY-A2-O-1600	2.3	1600	≥2.8	A2: Rat tooth
TCYY-A2-O-1800	2.3	1800	≥2.8	A2: Rat tooth
TCYY-A2-O-2300	2.3	2300	≥2.8	A2: Rat tooth
TCYY-A4-O-1600	2.3	1600	≥2.8	A4: Pelican jaw
TCYY-A4-O-1800	2.3	1800	≥2.8	A4: Pelican jaw
TCYY-A4-O-2300	2.3	2300	≥2.8	A4: Pelican jaw
TCYY-A3-O-1600	2.3	1600	≥2.8	A3: Rat tooth with Alligator jaw
TCYY-A3-O-1800	2.3	1800	≥2.8	A3: Rat tooth with Alligator jaw
TCYY-A3-O-2300	2.3	2300	≥2.8	A3: Rat tooth with Alligator jaw

Disposable Cytology Brushes



Straight Brush

The umbrella-shaped bristles are arranged to maximize the amount of tissue that can be obtained.



U-Shape Brush

U-shape brush is capable of 360° brush to take tissue samples, it can carry out smear and cultivate at the same time.



Thumb Ring Handle

Thumb ring handle, simple operation, flexible and convenient.



Integrated Brush Head

Integrated brush head design, no possibility of bristles shedding.

Product Code	Outer Diameter (mm)	Length (mm)	Endoscope Channel (mm)	Characteristic
TCYX-A-18-1050	1.8	1050	≥2.0	straight shape
TCYX-A-18-1200	1.8	1200	≥2.0	straight shape
TCYX-A-23-1600	2.3	1600	≥2.8	straight shape
TCYX-A-23-1800	2.3	1800	≥2.8	straight shape
TCYX-A-23-2300	2.3	2300	≥2.8	straight shape
TCYX-B-18-1050	1.8	1050	≥2.0	U shape
TCYX-B-18-1200	1.8	1200	≥2.0	U shape
TCYX-B-23-1600	2.3	1600	≥2.8	U shape
TCYX-B-23-1800	2.3	1800	≥2.8	U shape
TCYX-B-23-2300	2.3	2300	≥2.8	U shape

Disposable Retrieval Bags



High Strength Bag

High strength TPU material with good biocompatibility is used, which is soft and has high strength.



Better Support Performance

Provide high quality nickel titanium alloy material for better support performance and full expansion.



Small Diameter Shaft

Pass through the 10 mm trocar, which is convenient for operation.



Larger Volume

700ml volume bag is provided to facilitate the retrieval of large specimens at one time.

Product Code	Description	Volume	Packing
TCQWB-60	75ml Volume With String	75ml	1pc/box
TCQWB-80	200ml Volume WithString	200ml	1pc/box
TCQWB-100	500ml Volume With String	500ml	1pc/box